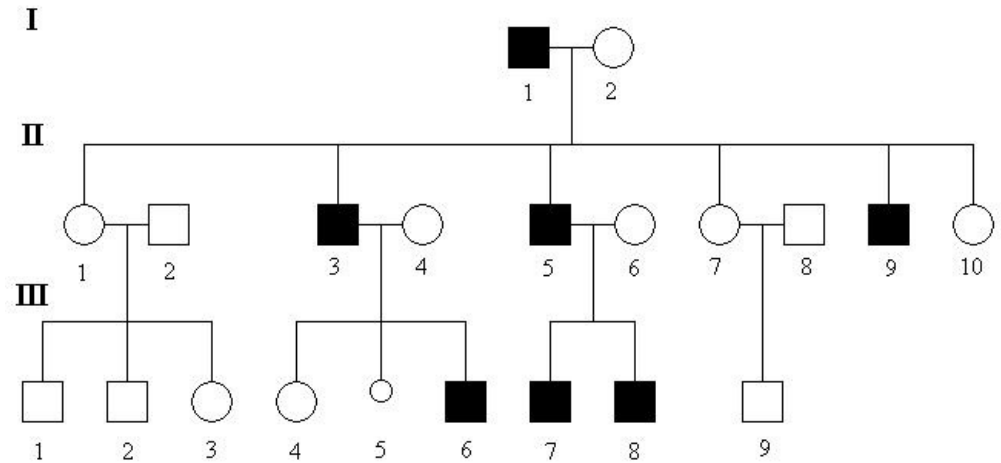


Y-linked inheritance

Y-linked inheritance

(Hollandric inheritance) is a specific type of inheritance linked to the Y sex chromosome. In the case of humans (and sex-determining animals of the genus *Drosophila*), the Y chromosome is present only in **males**. The transmission of Y-linked genes thus takes place exclusively from **father to son**. In humans, however, there are relatively few genes located on the Y chromosome associated with male sex determination (the SRY gene) or affecting spermatogenesis. There is no known hereditary disease linked to the Y chromosome.



Links

Related articles

- Gonosomal inheritance
 - Gonosomal dominant inheritance
 - Gonosomal recessive inheritance
- X-linked inheritance
- Chromosome Y
- Gene SRY
- Non-Mendelian inheritance

References

PRITCHARD, D – KORF BRUCE, R. *Základy lékařské genetiky*. 1. edition. Praha : Galén, 2007. pp. 182.