

Uterine tube (isthmus) - HE

Uterine tube (isthmus) - HE, 0.7x

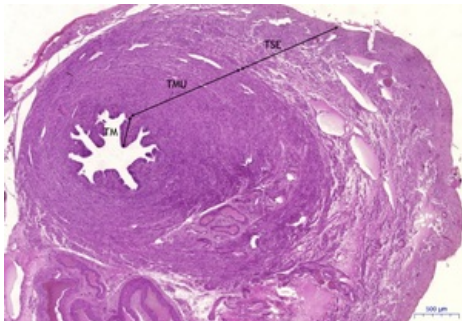


Uterine tube (isthmus):

- 1) TM – tunica mucosa
- a) EC – simple columnar epithelium with cilia
- b) ĚB – ciliated cells / cells with cilia
- c) ŹB – glandular (rod) cells / peg cells
- d) BB – basal cells / basal cells
- 2) TMU – muscular coat
- 3) TSE – serous tunic

Uterine tube (isthmus) - HE, 2x

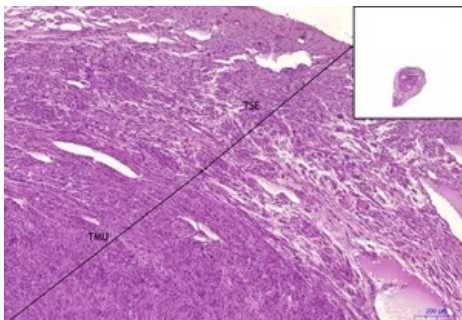
Uterine tube (isthmus):



- 1) TM – tunica mucosa
- a) EC – simple columnar epithelium with cilia
- b) ĚB – ciliated cells / cells with cilia
- c) ŹB – glandular (rod) cells / peg cells
- d) BB – basal cells / basal cells
- 2) TMU – muscular coat
- 3) TSE – serous tunic

Uterine tube (isthmus) - HE, 5x

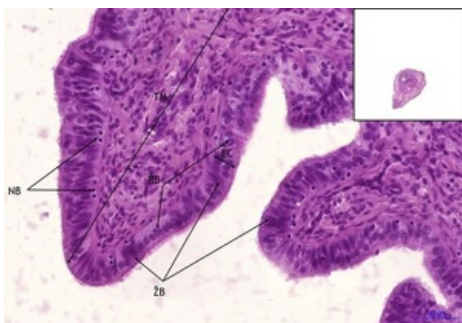
Uterine tube (isthmus):



- 1) TM – tunica mucosa
- a) EC – simple columnar epithelium with cilia
- b) ĚB – ciliated cells / cells with cilia
- c) ŹB – glandular (rod) cells / peg cells
- d) BB – basal cells / basal cells
- 2) TMU – muscular coat
- 3) TSE – serous tunic

Uterine tube (isthmus) - HE, 20x

Uterine tube (isthmus):



- 1) TM – tunica mucosa
- a) EC – simple columnar epithelium with cilia
- b) ĚB – ciliated cells / cells with cilia
- c) ŹB – glandular (rod) cells / peg cells
- d) BB – basal cells / basal cells
- 2) TMU – muscular coat
- 3) TSE – serous tunic