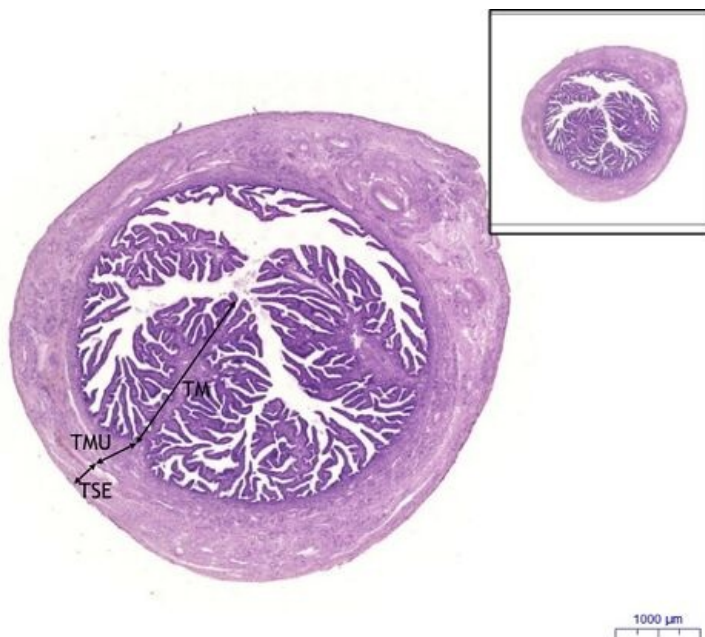


Uterine tube (ampulla) - HE

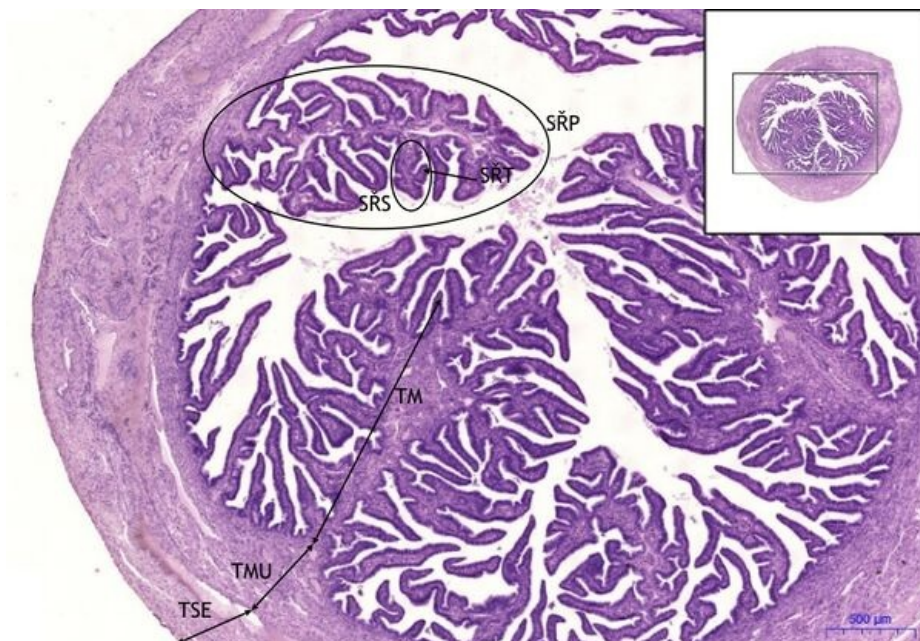
Uterine tube (ampulla) - HE, 0.9x



Uterine tube (ampulla):

- 1) **M** - tunica mucosa
- a) **EC** - simple columnar epithelium with cilia
- b) **SŘP** - primary mucosal fold
- c) **SŘS** - secondary mucosal fold
- d) **SŘT** - tertiary mucosal fold
- e) **ØB** - ciliated cells / cells with cilia
- f) **ŽB** - gland (rod) cells / peg cells
- h) **LPM** - lamina propria mucosae
- 2) **TMU** - tunica muscularis
- 3) **TSE** - tunica serosa

Uterine tube (ampulla) - HE, 2x



Uterine tube (ampulla):

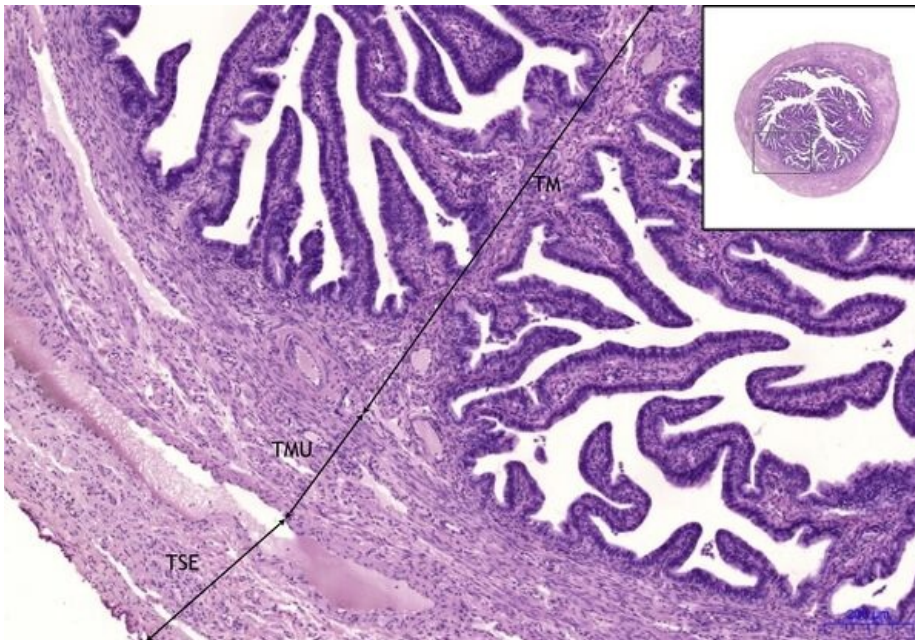
- 1) **M** - tunica mucosa
- a) **EC** - simple columnar epithelium with cilia
- b) **SŘP** - primary mucosal fold
- c) **SŘS** - secondary mucosal fold
- d) **SŘT** - tertiary mucosal fold
- e) **ØB** - ciliated cells / cells with cilia
- f) **ŽB** - gland (rod) cells / peg cells
- h) **LPM** - lamina propria mucosae
- 2) **TMU** - tunica muscularis
- 3) **TSE** - tunica serosa

Uterine tube (ampulla) - HE, 5x

Uterine tube (ampulla):

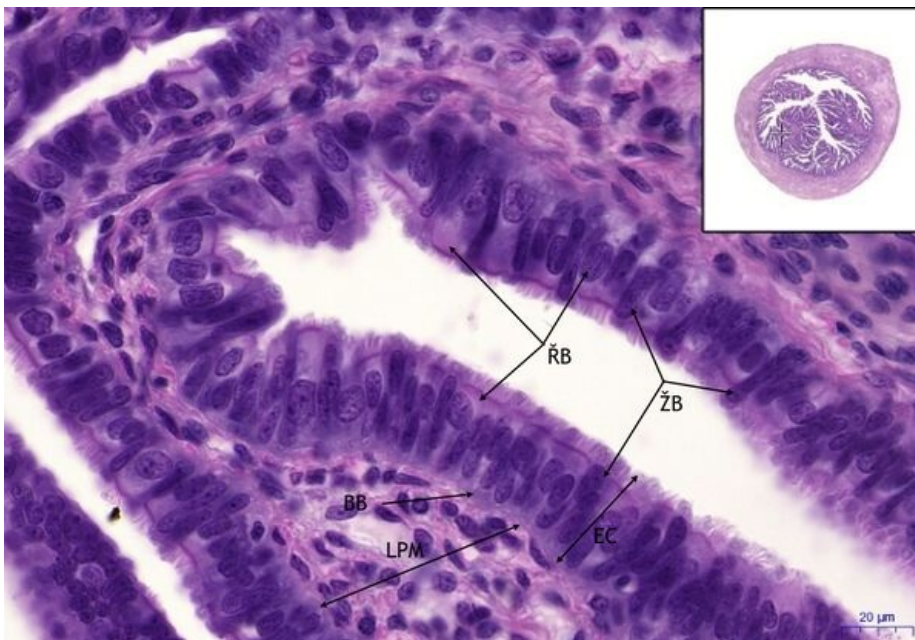
- 1) **M** - tunica mucosa
- a) **EC** - simple columnar epithelium with cilia
- b) **SŘP** - primary mucosal fold

- **c) SŘS** - secondary mucosal fold
- **d) SŘT** - tertiary mucosal fold
- **e) ØB** - ciliated cells / cells with cilia
- **f) ŽB** - gland (rod) cells / peg cells
- **h) LPM** - lamina propria mucosae



- **2) TMU** - tunica muscularis
- **3) TSE** - tunica serosa

Uterine tube (ampulla) - HE, 40x



Uterine tube (ampulla):

- **1) M** - tunica mucosa
- **a) EC** - simple columnar epithelium with cilia
- **b) SŘP** - primary mucosal fold
- **c) SŘS** - secondary mucosal fold
- **d) SŘT** - tertiary mucosal fold
- **e) ØB** - ciliated cells / cells with cilia
- **f) ŽB** - gland (rod) cells / peg cells
- **h) LPM** - lamina propria mucosae
- **2) TMU** - tunica muscularis
- **3) TSE** - tunica serosa

Navigation

Female genital system

← Slide G4 | List of Slides | Slide G6 →