

Ureter (SFLT)

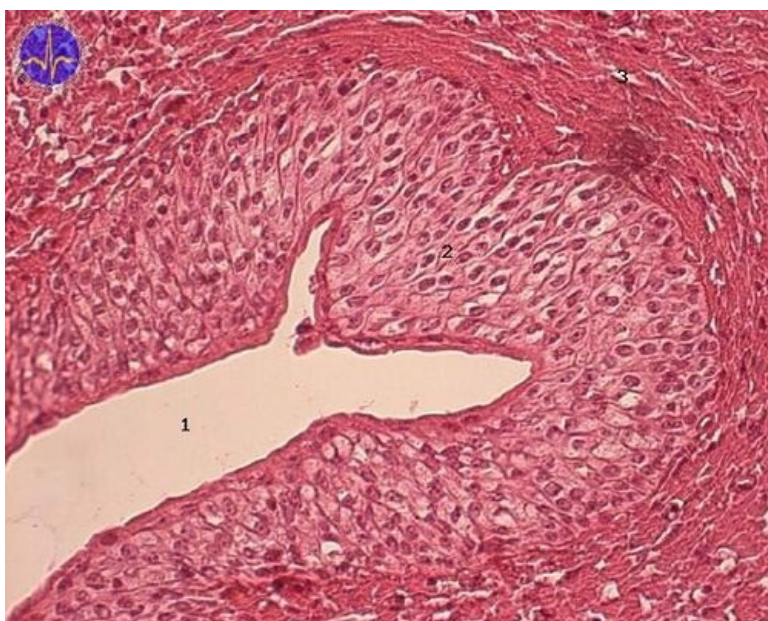


Ureter HE - clear magnification



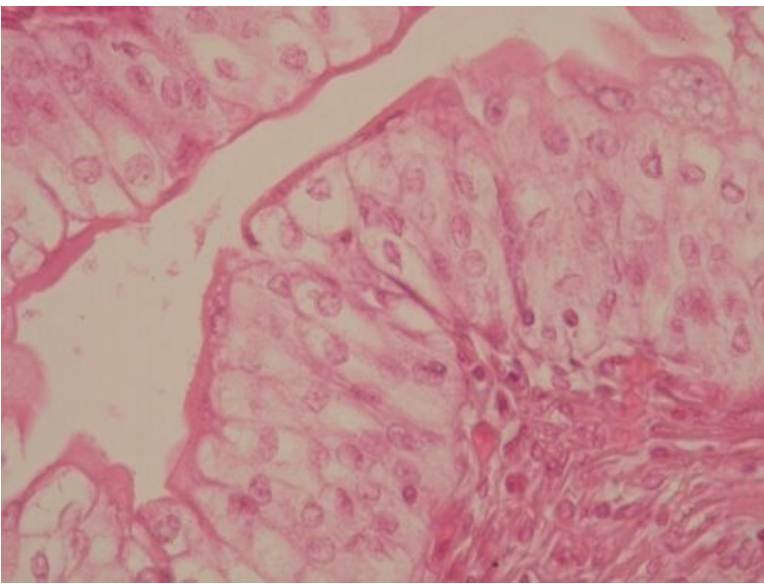
Description: 1. urothelium = transitional stratified epithelium, 2. lamina propria ligament, 3. longitudinal smooth muscle, 4. circular smooth muscle, 5. tunica adventitia.

Ureter HE - detail on transitional epithelium



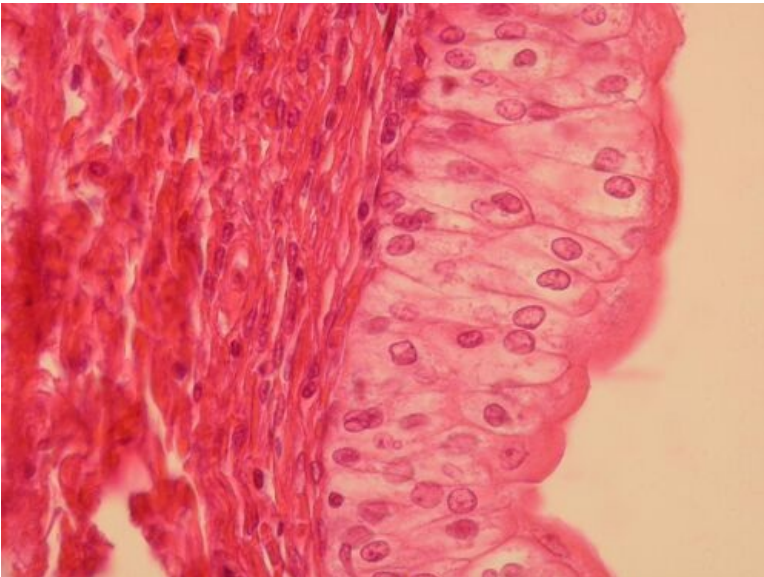
Description: 1. ureter lumen, 2. transitional epithelium (urothelium), 3. lamina propria ligament

Ureter HE - detail of the transitional epithelium



Description: on the surface of the transitional epithelium (the side facing the lumen of the ureter), a urothelial crust is visible, due to the presence of fusiform granules.

Ureter - detail of the transitional epithelium



Description: The cells of the surface layer of the urothelium are called umbrella cells because of their appearance. The occurrence of two nuclei or a polyploid (larger) nucleus is typical for them.

Urinary system

- Kidney (SFLT)
- Ureter (SFLT)
- Vesica urinaria (SFLT)

Links

- Histological atlas (3rd Faculty of Medicine UK)