

Ulna

The elbow bone (*ulna*) is located on the medial side of the forearm (*ulnar direction*). On the proximal part, there is an articular surface, forming a fossa of the medial ulnar and proximal radioulnar joints. The body of the bone (*corpus ulnae*) has a triangular cross-section. The distal end of the ulna (*caput ulnae*) is indirectly articulated with the carpus and directly with the radius .

Anatomy

Proximal part

- It creates a notch, ***incisura trochlearis***, in the anatomical position it is open ventrally, into which *the trochlea humeri* fits, and is bordered by the following formations:
 - ***olecranon*** – the most proximal part of the bone, when the joint is flexed it forms the tip of the elbow;
 - ***processus coronoideus*** – distal border of the notch;
 - ***incisura radialis*** – a small depression covered by cartilage, connected to the articular surface, into which *the caput radii* fits.

The body of the ulna

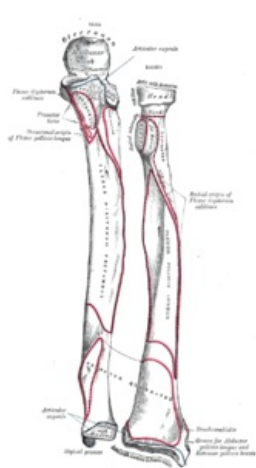
- The body has a **triangular cross-section** , the edges are reversed ventrally, dorsally and laterally (*margo anterior, posterior et interosseus*).
- *Margo interosseus* faces *the radius* and is connected to it by an interosseous ligamentous membrane.
- *The foramen nutricum* is directed proximally.

The head of the ulna

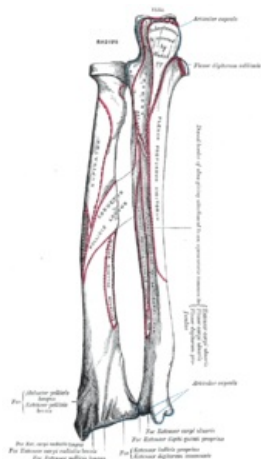
- The head of the ulna is formed by the cylindrical articular surface *of the circumferential articularis* , which laterally attaches to *the radius* and proximally to the discus articularis .
- From the mediodorsal side, *the processus styloideus ulnae* emerges , which is easily palpable.

Clinical contexts

See Forearm Fractures for more detailed information.



Bones of the left forearm
- ventral view.



Bones of the left forearm
- dorsal view.

Links

Related articles

- Upper limb bones
- Upper limb muscles

External links

- Ulna (česká wikipedie)
- Ulna (anglická wikipedie)

References

- CIHÁK, Radomír. *Anatomy*. 2nd edition. Prague: Grada Publishing, as, 2008. p. 516. ISBN 80-7169-970-5 .
-