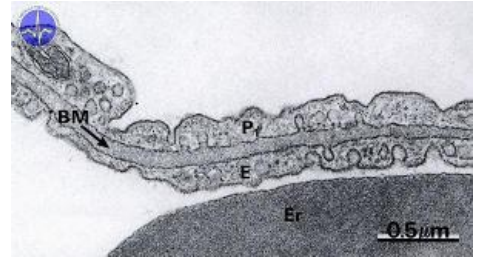


Type I pneumocyte

Type I pneumocytes make up the vast **majority of the surface** of the lining of the alveoli. As **gas exchange** between blood and air takes place through them, it is obvious that these are **extremely thin** cells with a thin oval nucleus, which are even thinner at the edges than the resolving power of a light microscope. At the same time, they are tightly connected to each other by means of zonulae occludentes, thereby **isolating** the other layers of the alveolus from air. Type I pneumocytes can no longer divide.



P1 - Type I pneumocyte

Links

Related articles

Other cells lining the alveolus:

- Pneumocyte II. type
- Brush cells

Articles:

- Alveolo-capillary membrane
- Alveolus (histology)

References

- LÜLLMANN-RAUCH, Renate. *Histology*. 1. edition. Prague : Grada, 2012. ISBN 978-80-247-3729-4.
- MESCHER, Anthony L – JUNQUEIRA, Luiz Carlos Uchôa. *Junqueira's Basic Histology*. 12. edition. United States : McGraw-Hill Education - Europe, 2009. 480 pp. ISBN 9780071630207.