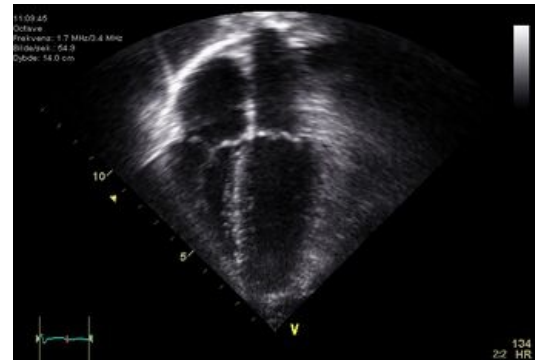


Two-dimensional echocardiography

It shows flat "cuts" of the heart while maintaining the actual movement of individual structures.

Indication:

- **Demonstration of pathological cardiac structures** – thrombi, myxoma, tumors;
- **assessment of valve structure and movement** - post-rheumatic and congenital valve defects, mitral valve prolapse, forward movement of the anterior mitralis in hypertrophic obstructive cardiomyopathy, infectious endocarditis;
- **evaluation of ventricular systolic function by assessment of myocardial systolic thickening** - coronary heart disease, cardiomyopathy, heart defects, myocarditis;
- **myocardial infarction complications** - rupture of the tendons / walls of the left ventricle, aneurysm;
- **morphological + structural abnormalities** - congenital heart defects;
- **pericardial effusion and tamponade**
- **pericardial diseases** - constrictive pericarditis;
- **heart wall thickness** - hypertension.



2D echocardiogram.

Links

Related articles

- echocardiography
- stress examination of the cardiovascular system

References

CHILD, P., et al. Internal Medicine. 2nd edition. Prague: Galén, 2007. ISBN 978-80-7262-496-6.