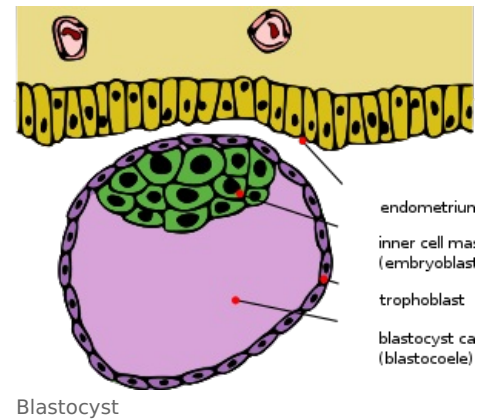


Trophoblast

Trophoblast is a layer of flat to cuboidal cells forming the **outer layer of the epithelium of the blastocyst** (outer cell mass), which differentiates into the amniotic envelope and the placenta (extraembryonic tissue of the embryo). It mediates **nidation of the egg** (via binding of trophoblast L-selectin to carbohydrate receptors of the endometrium, trophoblast integrins, laminin and fibronectin of the endometrial intercellular mass), then proliferates and differentiates into two layers:

- the inner layer: cytotrophoblast;
- outer layer: syncytiotrophoblast.



Links

Related articles

- First week of embryo development
- Portal:Embryological preparations
- Prenatal period
- Fetal membranes and placenta
- Placenta

References

- VOKURKA, Martin – HUGO, Jan, et al. *Velký lékařský slovník*. 9. edition. Praha : Maxdorf, 2009. 1159 pp. ISBN 978-80-7345-202-5.
- SADLER, Thomas, W – SINHA, M.D. *Langmanova lékařská embryologie*. 1. Czech edition. Praha : Grada, 2011. 414 pp. ISBN 978-80-247-2640-3.