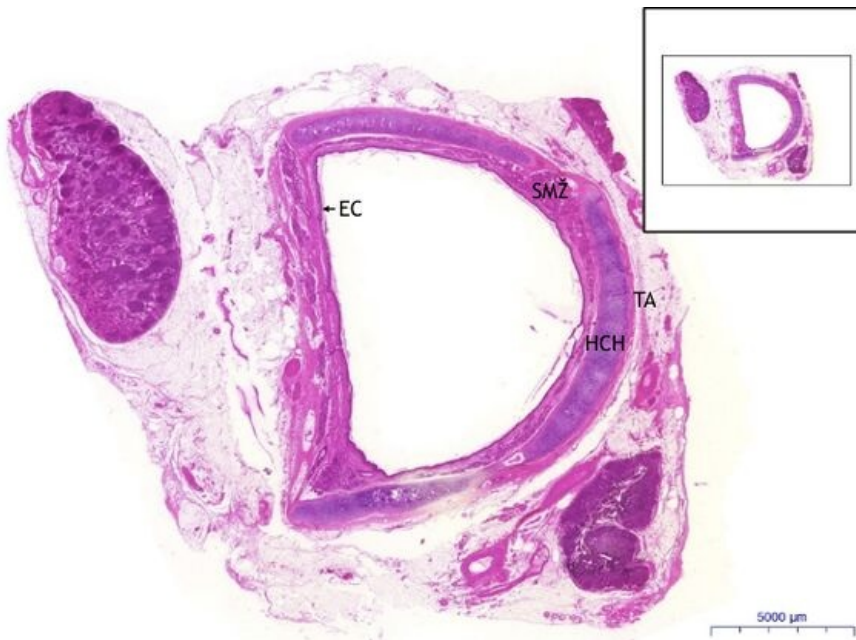


# Trachea - HE

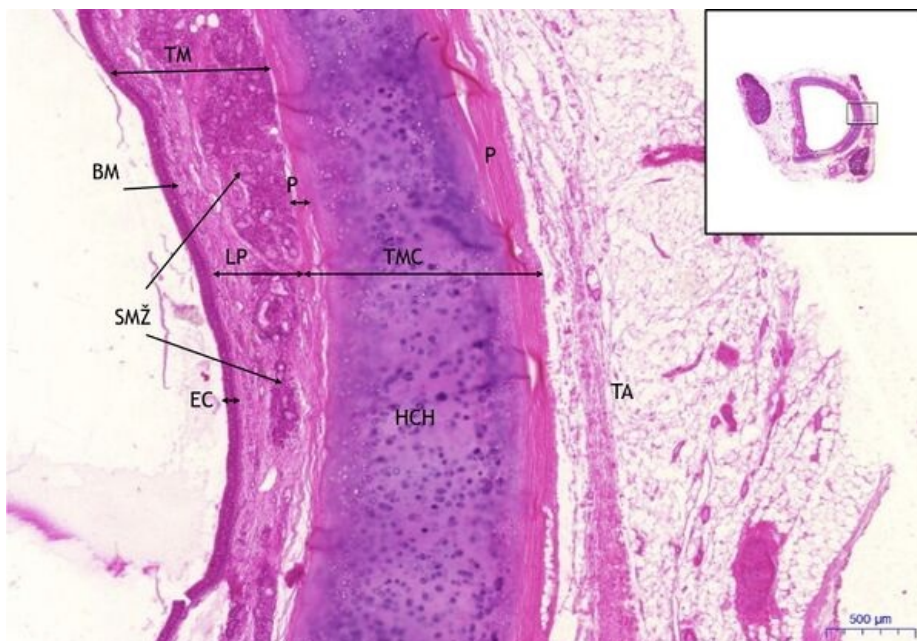
## Trachea, HE 0.3x



### Trachea:

- 1) **EC** - pseudostratified ciliated columnar epithelium
- 2) **SMŽ** - seromucous glands (glandulae tracheales)
- 3) **HCH** - hyaline cartilage
- 4) **TA** - tunica adventitia

## Trachea, HE 2x (front side / front)



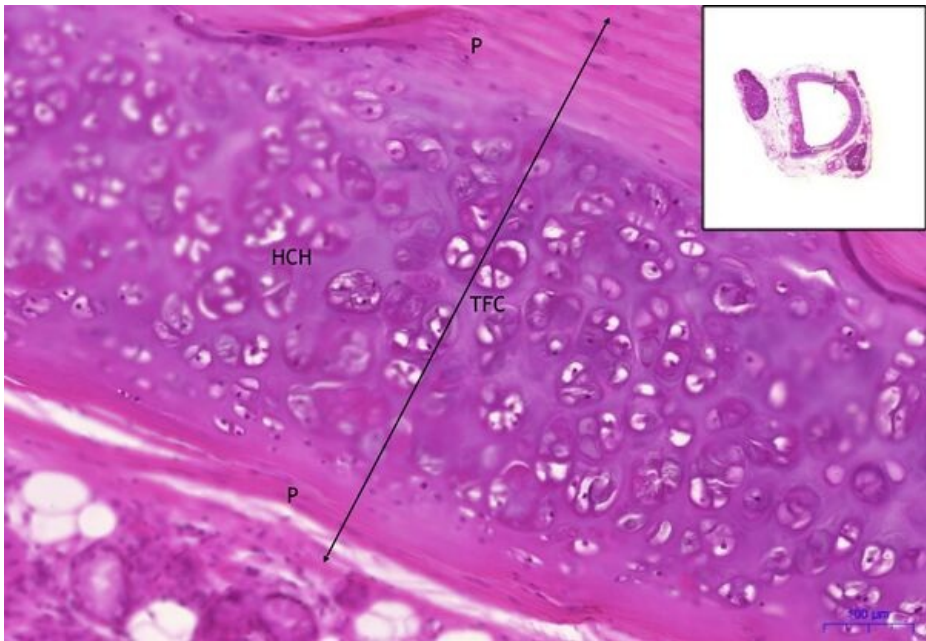
### Trachea:

- 1) **TM** - tunica mucosa
  - a) **EC** - pseudostratified ciliated columnar epithelium
  - b) **BM** - basal membrane
  - c) **SMŽ** - seromucous glands (glandulae tracheales)
  - d) **LP** - lamina propria
- 2) **TMC** - tunica fibrocartilaginea
  - a) **HCH** - hyaline cartilage
  - c) **P** - perichondrium
- 3) **TA** - tunica adventitia
- 4) **P** - perichondrium

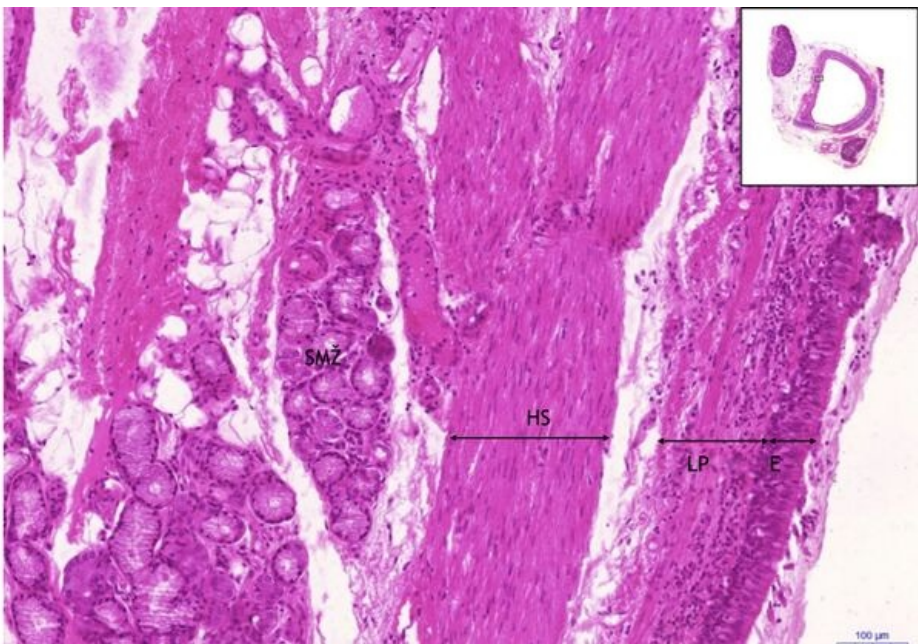
## Trachea, HE 10x

### Trachea:

- 1) **TFC** - tunica fibrocartilaginea
- a) **HCH** - hyaline cartilage
- c) **P** - perichondrium



### Trachea, HE 5x (back)



- Trachea:**
- 1) **E** - pseudostratified ciliated columnar epithelium
  - 2) **SMZ** - seromucous glands glands (glandulae tracheales)
  - 3) **LP** - lamina propria
  - 4) **HS** - smooth muscle

### Navigation

Respiratory system		
← Slide No. D2	List of slides	Slide No. D4 →