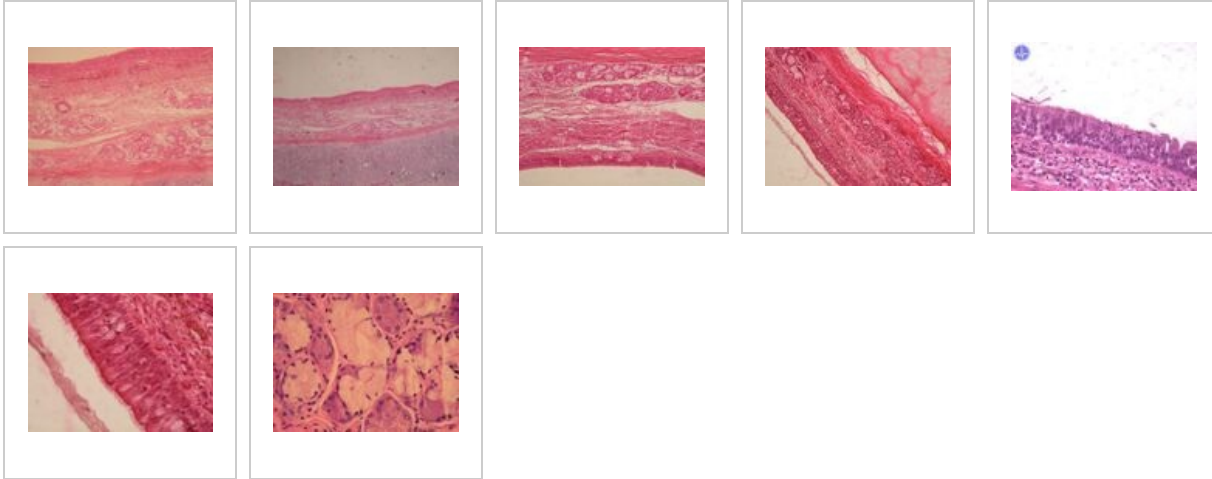
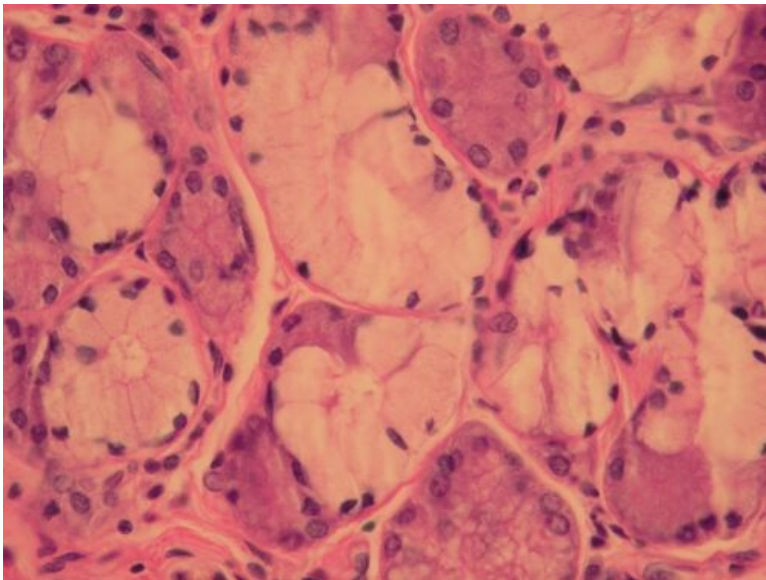


Trachea (SFLT)



Trachea HE - detail of seromucinous glands



Description: Glandulae tracheales are seromucinous glands in the lamina propria of the trachea. They secrete mucin, which covers the epithelium, protects it from drying out and moistens the flowing air. The serous component of their secretion contains antibacterial proteins and allows mucus to slide during the movement of the cilia (self-cleaning ability of the airways - mucociliary transport).

serous acini - dark, mucinous part - light

Respiratory system

- Epiglottis (SFLT)
- Larynx (SFLT)
- Trachea (SFLT)
- Bronchus segmentalis (SFLT)
- Lung (SFLT)
- Fetal Lung (SFLT)

Links

- Histological atlas (3. LF UK)