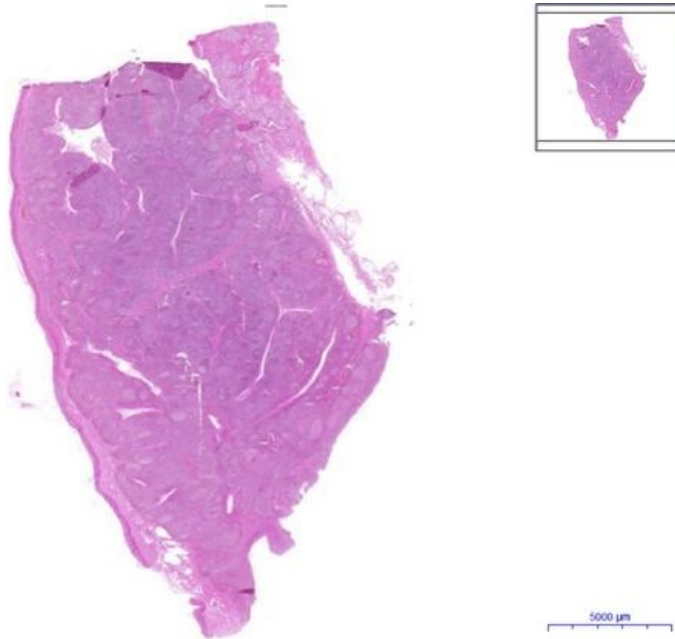


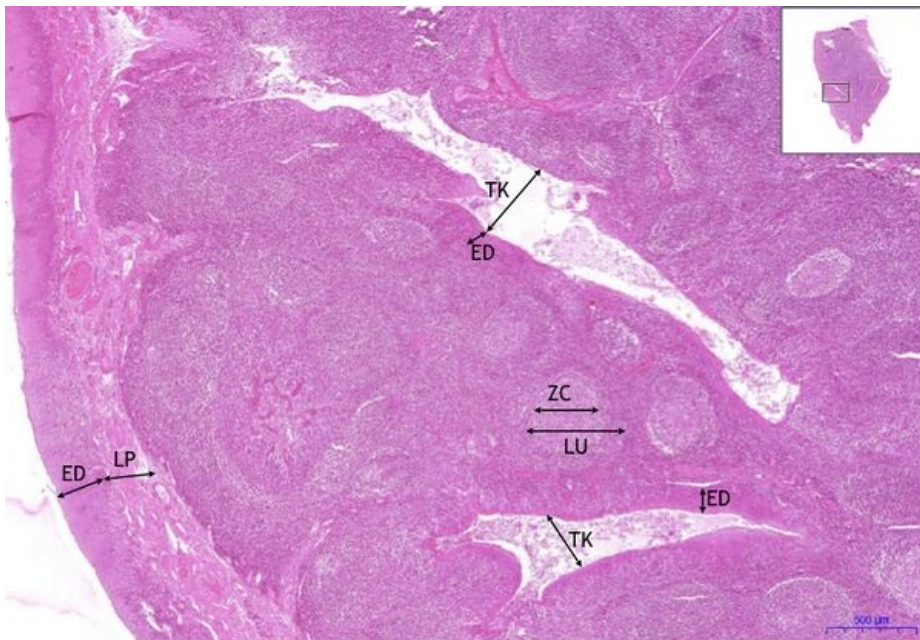
# Tonsilla palatina - HE

## Tonsilla palatina - HE, 0,3x



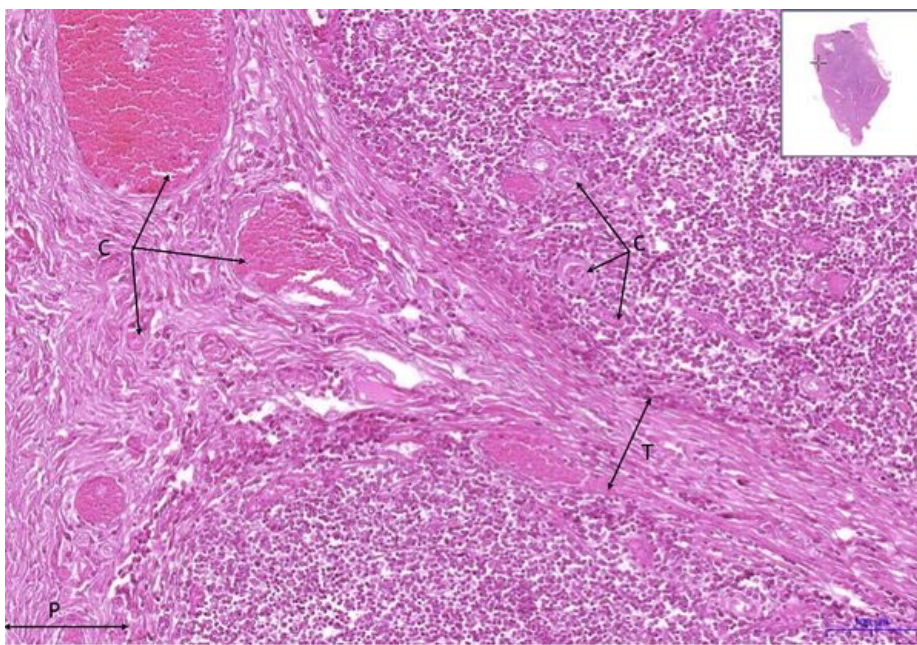
- Tonsilla palatina:

## Tonsilla palatina - HE, 2x



- Tonsilla palatina:
- 1) ED - stratified squamous epithelium
- 2) LP - lamina propria
- 3) TK - tonsillar crypt
- 4) C - blood vessel
- 5) LU - lymphatic nodule
- a) ZC - germinal center

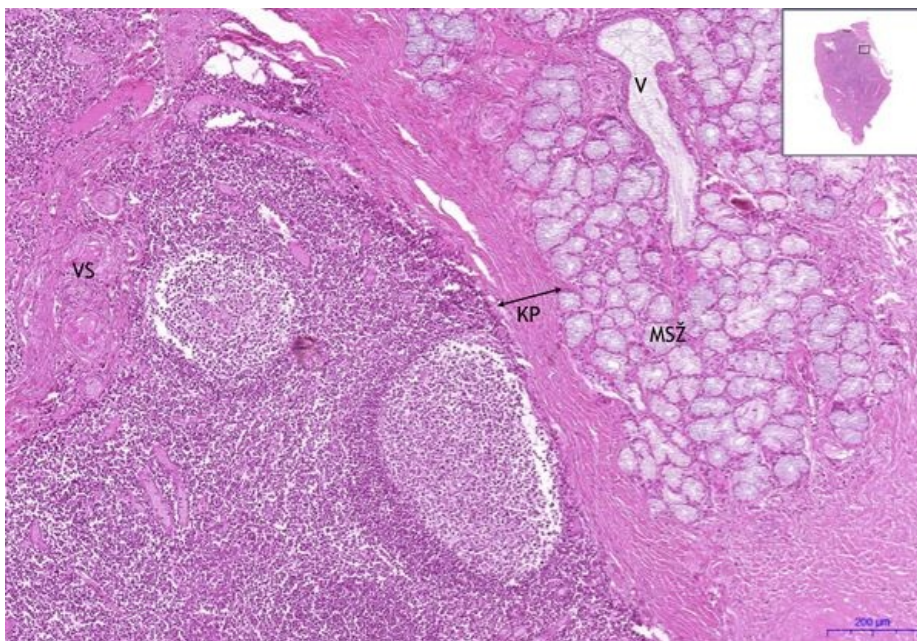
## Tonsilla palatina - HE, 5x



▪ **Tonsilla palatina:**

- 1) C - blood vessel
- 2) T - trabecula
- 3) P - capsule

## Tonsilla palatina - HE, 10x



▪ **Tonsilla palatina:**

- 6) KP - collagen capsule
- 7) VS - connective tissue septa
- 8) MSŽ - mucous salivary glands

## Navigation

**Navigace: Lymfatická tkáň / Lymphoid tissue**

← Preparát č. 38

Seznam preparátů

Preparát č. 36 →

**Navigace: Imunitní systém / Immune system**

← Preparát  
L6

Seznam  
preparátů

Preparát L1  
→