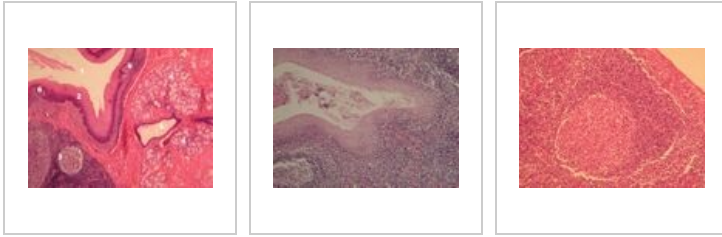
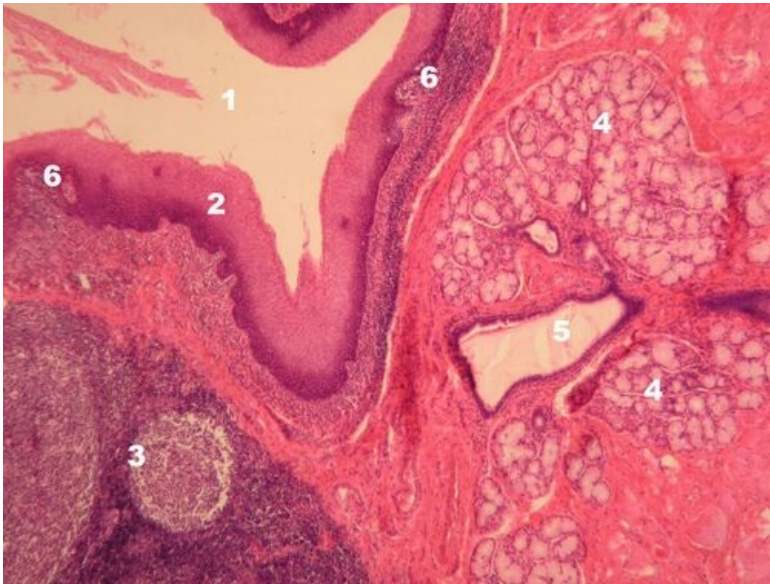


Tonsil (specimen)

Overview



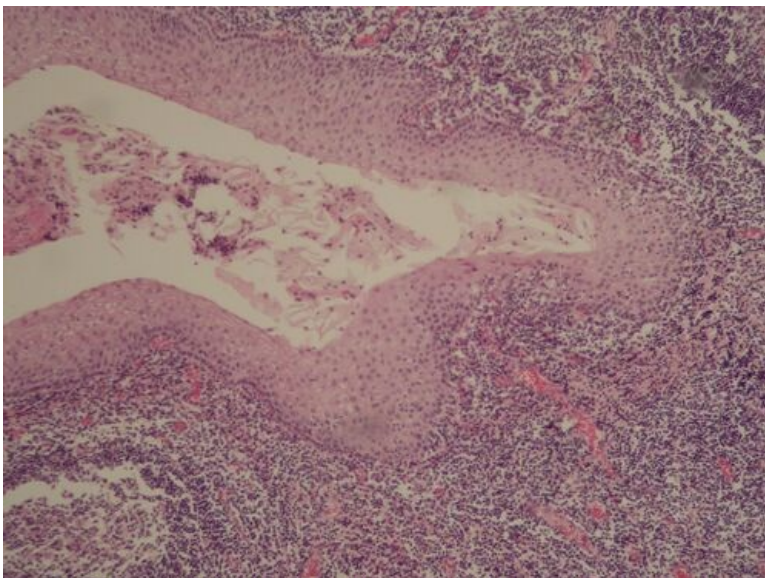
Specimen 1



Title: Tonsil

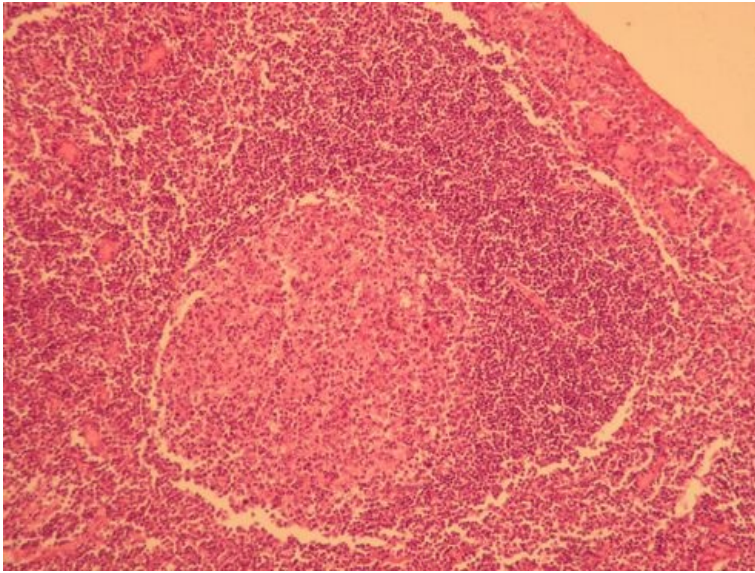
Description: The fibrous envelope of the tonsil is not complete and transitions into a layered squamous non-keratinizing epithelium. Deep grooves in the surface of the tonsil are called crypts and contain shed epithelial cells, leukocytes, and bacteria. Lymphatic follicles (described below) are well visible and predominantly contain B-lymphocytes. T-lymphocytes are scattered among the follicles.

Specimen 2



Title: Crypt Detail

Specimen 3



Title: Detail of Secondary Lymphatic Follicle

Description: Lighter part - Germinal center, darker part - Incomplete mantle layer (appearance of a cap, densely arranged small B-lymphocytes).

Lymphoid tissue

- Lymph node (specimen)
- Spleen (specimen)
- Thymus (specimen)
- Tonsil (specimen)

Links

- Modul Buněčné základy medicíny (3. LF)

Study materials for the specimen

- General Anatomy of the Lymphatic System