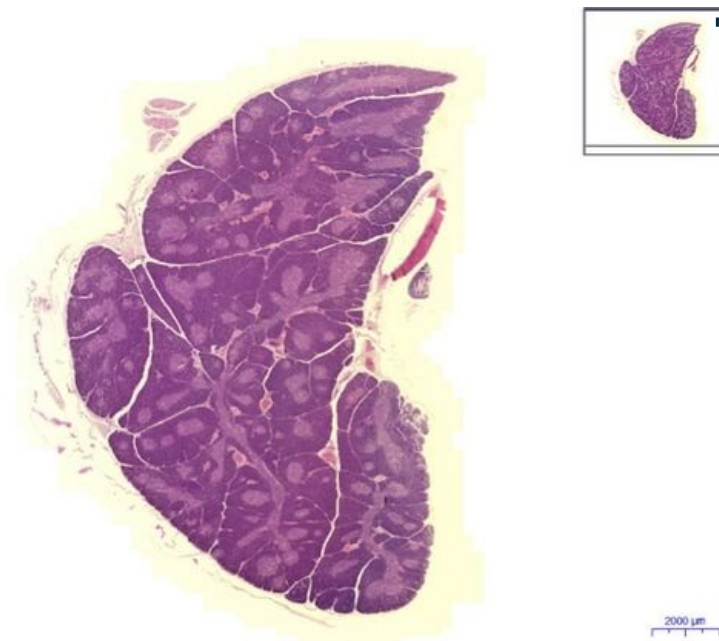
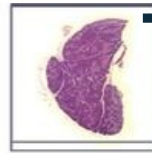


# Thymus (HE)

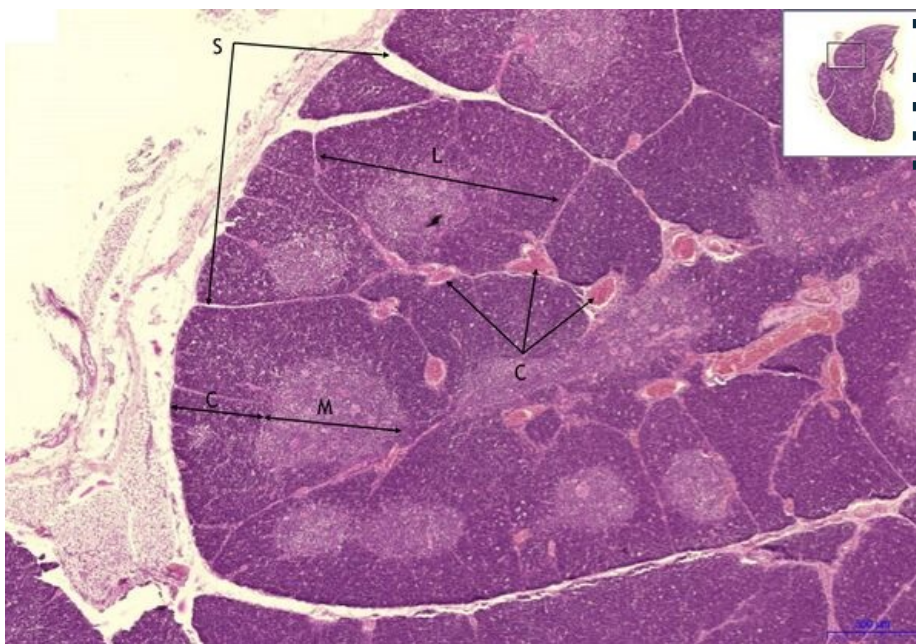
## Thymus - HE, 0,4x



■ Thymus:

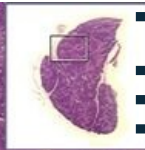


## Thymus - HE, 2x



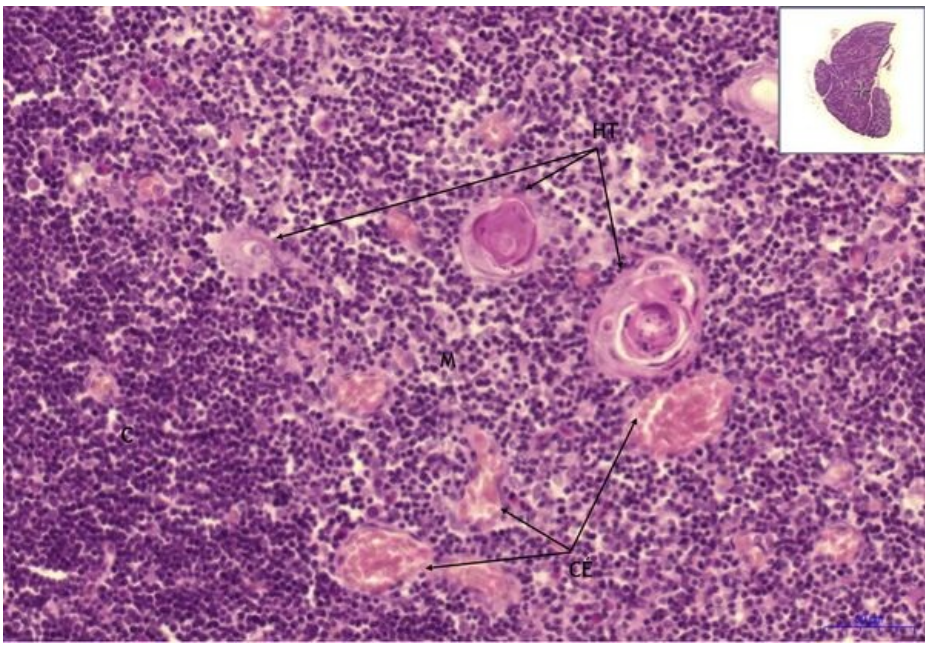
■ Thymus:

- 1) L - lobule
- a) C - cortex
- b) M - medulla
- 4) S - septum

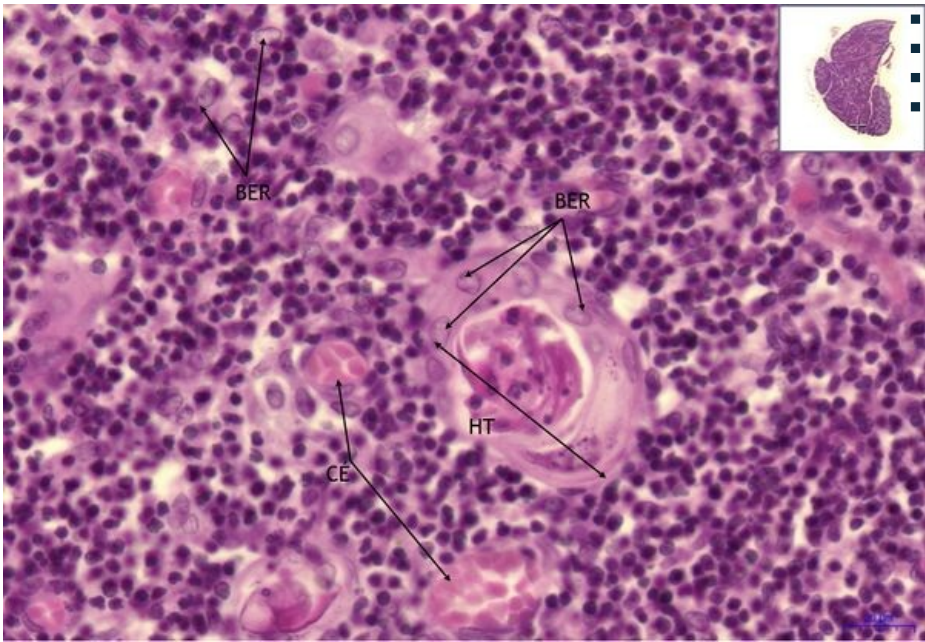


## Thymus - HE, 20x

- Thymus:
- 1) M - medulla
- 2) CÉ - blood vessels
- 3) HT - Hassall's corpuscle



**Thymus - HE, 40x**



- **Thymus:**
- 1) **CÉ** - blood vessels
- 2) **HT** - Hassall's corpuscle
- 3) **BER** - epithelial reticular cells

## Navigation

### Navigation: Lymphoid tissue

← Preparation no. 37 | List of preparations | Preparation no. 39 →

### Navigation: Immune system

← Preparation L5 | List of preparations | Preparation L7 →