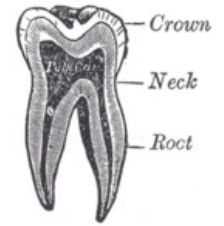


Third upper Molar

Otherwise called wisdom tooth (*dens sapientiae*), crown width 8.5 mm, root length 11 mm, tooth length 17.5 mm. It differs from other Molars in size. The shape is individually variable. Often not established at all. The classification of pillar teeth according to Voldrich is individual and depends on the morphology of the particular tooth of the individual.

The **crown** may be of both four-crowned and three-crowned shape, and the multi-crowned type also occurs.

Roots are also highly variable in number, shape and arrangement.



Scheme of a chair

References

Related articles

- Morphology of teeth

References used

- JANSOVÁ, K a M EBER. *Preklinická stomatologie : I. část - morfologická. 2.*, dopl vydání. Olomouc : Univerzita Palackého, 1996. 72 s. ISBN 80-7067-596-9.
- ČIHÁK, Radomír a Miloš GRIM. *Anatomie. 2.* upr. a dopl vydání. Praha : Grada Publishing, 2002. 470 s. sv. 2. ISBN 80-247-0143-X.