

The role of *Helicobacter Pylori* in the pathogenesis of Gastric Cancer

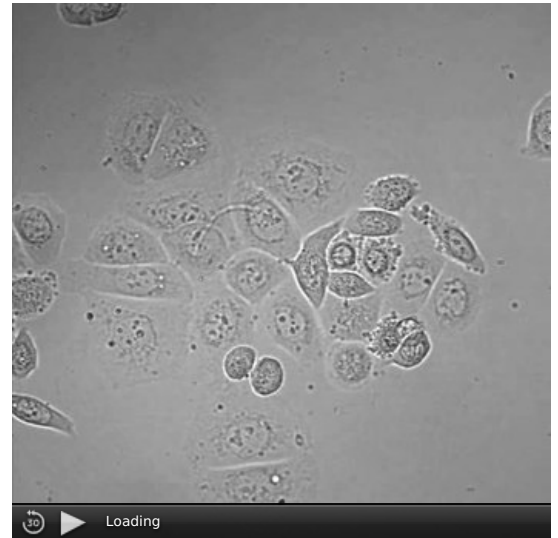
Infection of the gastric lumen with Gram-negative curved rod of *Helicobacter pylori* is certainly the most important factor in the development of inflammation, atrophic gastritis and histological development of gastric adenocarcinoma .

Various virulence factors of this bacterium are involved in the pathogenesis of the disease . The natural course of the infection may vary depending on the **genetic predisposition** of the bacterium and the host and the environment.

Virulence factors

The **virulence factors** of *H. pylori* are associated four genetic loci

- **cag PAI** (cag Pathogenicity Island) - is a pathogenetic locus encoding several proteins. One of them encodes a secretory system capable of translocating CagA (a protein also encoded within *cag PAI*) into gastric epithelial cells. Tyrosine residues of internalized CagA protein are phosphorylated by SRC family kinases. Phosphorylated CagA subsequently activates ERK and tyrosine phosphatase-2 containing the SH2 domain (SRC-homologous 2 domain). This process is manifested by morphological transformation of the gastric epithelium. *H. pylori* strains containing a functional *PAI cag* can induce the production of pro-inflammatory modulators (eg IL-8).
- **vacA gen** - this gene encodes a vacuolation cytotoxin. The cytotoxin acts as a voltage-gated channel for bicarbonate and organic anions. It induces vacuole formation in eukaryotic cells and stimulates epithelial apoptosis.
- **babA gen** - encodes the outer membrane protein of the BabA bacterium, which binds to the Lewis B antigen-blood group present on the membranes of gastric cells. It thus mediates the tight and firm adhesion of *Helicobacter pylori* to the stomach wall.
- **iceA gen** - is a gene probably associated with virulence factors. Its function is not completely known. The expression of this gene is induced by the bacteria's contact with the stomach wall and in some people it is associated with a higher risk of peptic ulcer .



Growth of *Helicobacter pylori*

Proinflammatory action of *H. pylori*

With its virulence factors, *H. pylori* stimulates an **inflammatory response** on the stomach wall

One of the pathways of bacteria is through the secretory system created by the *cag-PAI* genes . The created channel (T4SS - Type 4 secretion system) allows to transfer the CagA protein across the gastric epithelial cell membrane . Following its phosphorylation, a cascade of **MAP-kinases** (mitogen-activating protein kinase) is activated, leading to the activation of **NFκB** (nuclear factor κB) and AP1 (activator protein 1), leading to the production of pro-inflammatory factors. Likewise, the proteoglycan (**PG**) of the gram-negative bacterium wall, which via the NOD1 (nucleotide-binding oligomerization domain-1) and **RICK** pathways, can pass through T4SS. (receptor-interacting serine-threonine kinase, RIP2) also activates **NFκB** and thus the production of cytokines and other inflammatory mediators.

However, *H. pylori* can also act with its lipopolysaccharide through **TLR4** (Toll-like receptor 4), which also stimulates an inflammatory response via NFκB.

The role of the immune system

Mechanisms of the host's immune response to damage, such as *H. pylori*, also play an **important role** in the pathogenesis of gastric cancer . Experimental infection of *Helicobacter* T and B lymphocytes did not lead to changes in the gastric mucosa. Infection of *Helicobacter spp.* in mice without B cells but capable of a normal T-cell response, severe mucosal atrophy and metaplasia occurred . Further experiments have shown that **Th1 cells** in particular are involved in the pathogenesis of atrophic gastritis .

Experiments in mice have also suggested that **hematopoietic cells** may be **recruited** from bone marrow, **stem cells** , endothelial or epithelial progenitors, or myofibroblasts during chronic inflammation . These cells settle in the inflammatory tissue and are most likely involved in the **progression of the disease** .

he presence of **inflammatory mediators** represents a **non-physiological environment** for stem cells , in which metaplasia to dysplasia can therefore occur . Further increased *IL-1 β* production ; causes reduced gastric acid secretion. Elevated pH is conducive to bacterial growth. Few species of bacteria can survive in the stomach with normal secretion of stomach acids. In contrast, at pH> 4, a wide range of species is able to grow.

Although it would appear that the administration of proton pump inhibitors (PPIs) in reflux oesophagitis may dramatically increase the risk of atrophic gastritis by increasing pH, previous studies on this topic are contradictory and generally show no link.

We must not forget the increased production of free radicals due to inflammation. The formation of ROS (reactive oxygen species, eg in the natural neutrophilic immune response) and RNS (reactive nitrogen species, eg due to stimulation of iNOS - inducible NO synthase - via *NF- κ B*) leads to further damage to tissue, cell structures and also to numerous DNA mutations .

Molecular Mechanisms

Molecular mechanisms of gastric cancer include disorders and mutations of proto-oncogenes (*c-met* , *c-erbB2*), tumor suppressor genes (*TP53* , *APC* , *RAR & beta* ; *RUNX* family), cell adhesion molecules (E-cadherin, CD44) and cell cycle control molecules (cyclin E , p27, E2F). Other genetic abnormalities may include microsatellite sequence instability (associated with mismatch-repair gene mutations), growth factors, and cytokines.. These factors may be involved in carcinogenesis either by increased cell proliferation, impaired cell DNA repair mechanisms, uncontrolled growth or stimulation of the growth of surrounding cells. The effect of food is also described here, as nitrates present in food (eg sausages, but also vegetables) can be reduced to nitrites and possibly to nitrosamines, which have mutagenic effects.

Bacterial, genetic, immune and molecular factors are involved in the etiology and pathogenesis of gastric cancer. The key stimulus is probably the presence of *H. pylori* in the stomach. Eradication of *H. pylori* can not only stop pathological changes in the stomach wall, but can even reverse atrophy and restore normal gastric wall architecture. The disease progresses from inflammation through atrophic gastritis, intestinal metaplasia and dysplasia to adenocarcinoma. It depends on the genetic make-up of the bacterium and the host whether the disease progresses or whether *H. pylori infection* is asymptomatic. Template:Doplňte zdroj

Links

Related articles

- Viruses
- Virulence
- Stomach
- Stomach Cancer
- Helicobacter pylori

External links

- Stomach Cancer (<https://nemoci.vitalion.cz/rakovina-zaludku/%7C>)
- Helicobacter pylori (<http://www.rehabilitace.info/zdravotni/helicobacter-pylori-priznaky-lecba-a-jak-se-testuje/%7C>)

Taken from

References

Reference

Kategorie:Gastroenterologie Kategorie:Oncology