

The cerebellopontine angle syndrome

The **cerebrospinal angle** is the space between the cerebellum and the pons, which is filled with cerebrospinal fluid and is a very common site of vestibular schwannoma. Expansion in that area accounts for 10% of all intracranial tumors and causes a set of symptoms we call pontocerebellar angle syndrome.

Content of the pontine angle

- cranial nerves: n. facialis, n. vestibulocochlearis
- flocculus
- lateral recess of the fourth cerebral ventricle

Symptoms

- cerebellar syndrome
- peripheral paresis of VII.
- ipsilateral impairment of the corneal reflex
- balance disorders
- hypacus
- tinnitus
- vertigo
- nystagmus
- diplopia

Causes

- schwannoma n. VIII.
- meningioma
- epidermoid
- cerebellar astrocytoma
- glomus jugulare
- metastases

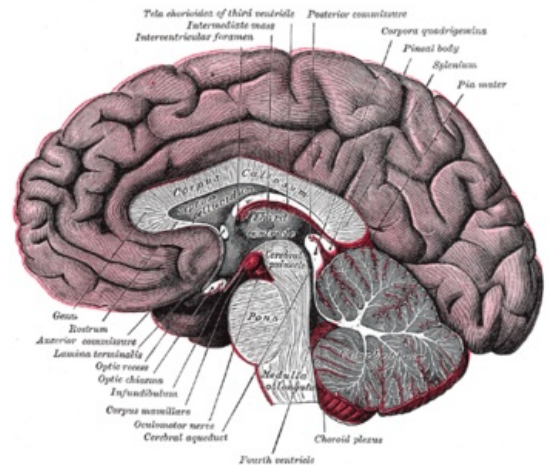
Links

Related articles

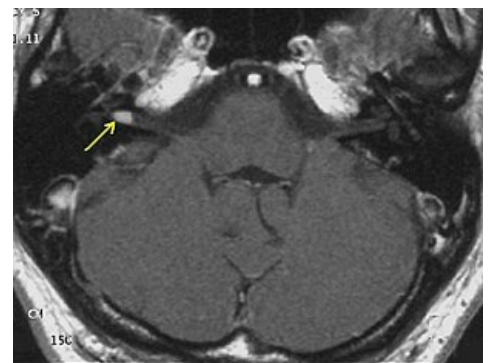
- Tumors of the pontine angle/PGS/diagnosis
- Cerebellum
- Pons Varoli
- Schwannoma
- Cerebellar syndrome
- Facial nerve palsy
- Nervus vestibulocochlearis
- Nervus facialis
- Nystagmus
- Vertigo
- Astrocytoma
- Meningeoma
- Epidermoid

Reference

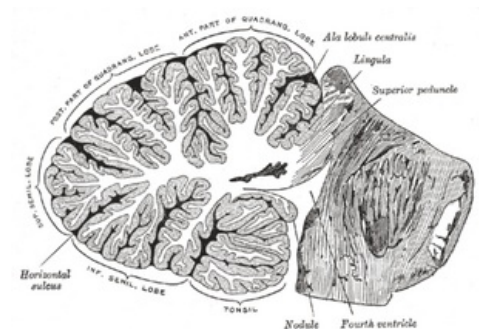
- LARNER, Andrew J.. *A-Z of Neurological Practice : A Guide to Clinical Neurology*. 2nd edition. 2011. ISBN 978-1-84882-994-7.
- ROSAHL, S.. *Cerebellopontine angle and posterior cranial fossa* [online]. ©2013. [cit. 2013-02-16]. <<https://www.uniklinik-freiburg.de/neurochirurgie.html>>.



Brain - description



Vestibular schwannoma



Cerebellum