

# Tetrabromophenol blue

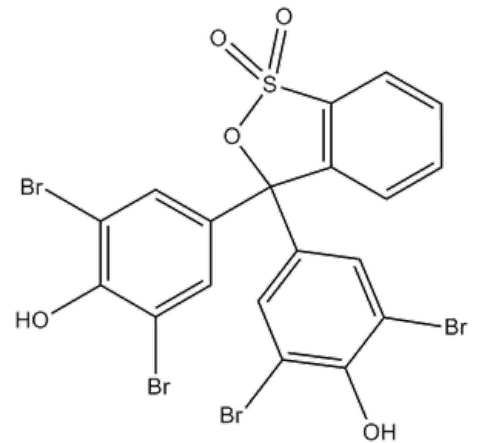
**Tetrabromophenol blue** is an acid-base indicator. It is used to detect protein in urine based on the protein error of acid-base indicators.

## Links

### Related articles

- [Urine examination](#)
- [Protein in the urine \(proteinuria\)](#)

Category:Biochemistry Category:Clinical Biochemistry



Tetrabromophenol blue