

Template:Infobox - tumor



Documentation

[=edit edit ([https://www.wikilectures.eu/index.php?title=template:infobox_-_tumor/documentation&action="](https://www.wikilectures.eu/index.php?title=template:infobox_-_tumor/documentation&action=))]

[page history (https://www.wikilectures.eu/index.php?title=template:infobox_-_tumor/documentation&action=history)]

[empty memory (https://www.wikilectures.eu/index.php?title=template:infobox_-_tumor&action=purge)]

The **Tumor Infobox** can be used to briefly characterize a tumor in articles from pathology and oncology.

Usage

Paste the infobox into the article by copying and filling in the template below. Any omitted parameter lines will not be displayed at all.

```
{{Infobox - tumor
| name =
| image =
| caption =
| ICD =
| ICD-0 =
| Location =
| prevalence in the Czech Republic =
| incidence in the Czech Republic =
| maximum incidence =
| prognosis =
| key mutation =
| signalling cascade =
| histological type =
| part of a syndrome =
| positive immunohistochemical markers =
| negative immunohistochemical markers =
| molecular markers =
| therapeutic modalities =
}}
```

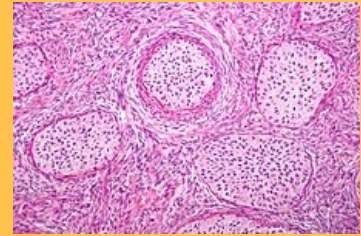
An example

```
{{Infobox - tumor
| name = Brenner's tumor
| image = Brenner tumour intermed mag.jpg
| caption = Bright nests of cells of transitional epithelium character are surrounded by relatively abundant masses of mesenchymal origin
| ICD = {{ICD|D27}} (Benign), {{ICD|C56}} (malignant), {{ICD|D39,1}} (borderline), {{ICD|D39,1}} (proliferating)
| ICD-0 = {{ICD0|9000}}
```

D27 (<https://mkn10.uzis.cz/prohlizec/D27>) (Benign), C56 (<https://mkn10.uzis.cz/prohlizec/C56>) (malignant), D39,1 (<https://mkn10.uzis.cz/prohlizec/D39,1>) (borderline), D39,1 (<https://mkn10.uzis.cz/prohlizec/D39,1>) (proliferating)

```
| localization = [[ovary]]
| prevalence in the Czech Republic =
| incidence in the Czech Republic =
| maximum incidence = 50 years
| prognosis =
| key mutation =
| signalling cascade =
| histological type = adenofibroma
| part of a syndrome = [[Meigs syndrome]]
| positive immunohistochemical markers = [[Keratin (marker)|keratin]],
[[EMA]], [[CEA]], [[Glycogen (marker)|glycogen]], [[Chromogranin]], [[NSE]]
and [[EGFR]]
| negative immunohistochemical markers = [[p16]], [[p53]]
| molecular markers =
| therapeutic modalities =
}}
```

0.uzis.cz/prohlizec/D39,1)
(proliferating)



*Bright nests of cells of
transitional epithelium character
are surrounded by relatively
abundant masses of
mesenchymal origin*