

Systemic circulation

This article has been translated from WikiSkripta; the **translation** needs to be checked.
This article has been translated from WikiSkripta; the **formatting** needs to be checked.

Arteries

The aorta

Ascending aorta - *Aorta ascendens*

- Right and left coronary arteries - *Arteria coronaria dextra et sinistra*

Aortic arch - *Arcus aortae*

- Brachiocephalic trunk - *truncus brachiocephalicus*

Right common carotid artery - *arteria carotis communis dextra*

Right subclavian artery - *arteria subclavia dextra*

Left common carotid artery - *arteria carotis communis sinistra*

Left subclavian artery - *arteria subclavia sinistra*

- ■ Common carotid artery - *arteria carotis communis*

Internal carotid artery - *arteria carotis interna*

External carotid artery - *arteria carotis externa*

- Supply the head and neck with oxygenated blood

- ■ Subclavian artery - *arteria subclavia*

Axillary artery - *arteria axillaris*

Brachial artery - *arteria brachialis*

Radial artery - *arteria radialis*

Ulnar artery - *arteria ulnaris*

- Blood supply to the upper extremity

Descending aorta - *Aorta descendens*

- Thoracic aorta - *aorta thoracica*

Splenic artery - *arteria splenica/lienalis*

Gastric artery - *arteria gastrica*

Hepatic artery - *arteria hepatica*

- Abdominal aorta - *Aorta abdominalis*

- Paired visceral branches:

Suprarenal arteries - *arteriae suprarenales*

Renal arteries - *arteriae renales*

Testicular arteries - *arteriae testiculares*

Ovarian arteries - *arteriae ovaricae*

- Unpaired visceral arteries:

Superior mesenteric artery - *arteria mesenterica superior*

Inferior mesenteric artery - *arteria mesenterica inferior*

- Blood supply to the guts

Right common iliac artery - *arteria iliaca communis dextra*

Left common iliac artery - *arteria iliaca communis sinistra*

- ■ Common iliac artery - *arteria iliaca communis*

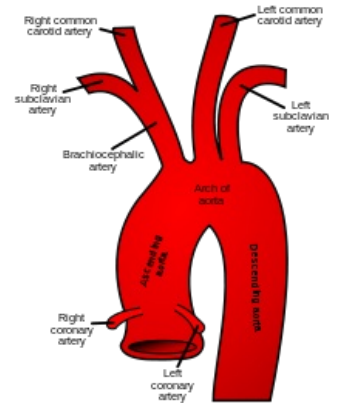
Internal iliac artery - *arteria iliaca interna*

External iliac artery - *arteria iliaca externa*

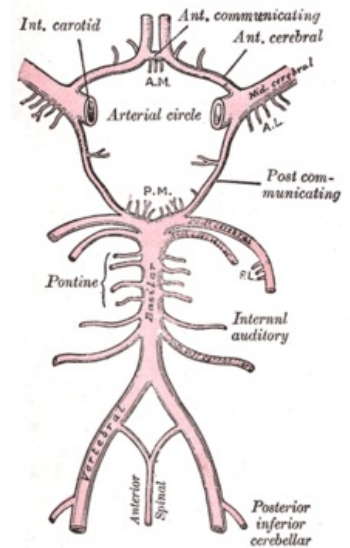
Femoral artery - *arteria femoralis*

Anterior tibial artery - *arteria tibialis anterior*

Posterior tibial artery - *arteria tibialis posterior*



Arcus aortae and its branching



Circle of Willis

- Blood supply to the lower extremity

Blood supply of the brain

The blood goes to the brain by:

- 2 internal carotid arteries – *arteria carotis interna dextra et sinistra*
- 2 vertebral arteries – *arteriae vertebrales*

At the brain stem level the *vertebral arteries* join together, forming the basilar artery – *arteria basilaris*. The basilar artery together with internal carotid arteries create the circle of Willis.