

Surgical approaches to the pancreas

Three possible surgical approaches to the pancreas:

1. via the omentum minus (between the liver and the small curvature of the stomach, this gives access only to the head and part of the body of the pancreas)
2. via the ligamentum gastrocolicum (between the stomach and the transverse colon, accessing the whole pancreas)
3. via the mesocolon transversum (the anastomosis magna and its branches to the intestine are located here, so this procedure is not performed unless necessary)

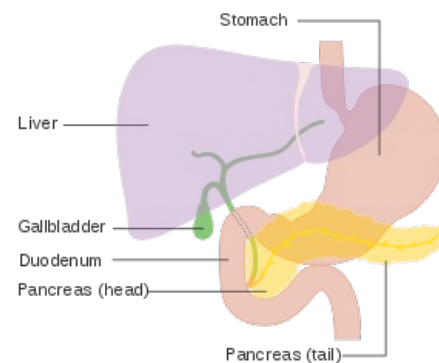
Links

Related articles

- Pancreas

Sources

- PASTOR, Jan. *Langenbeck's medical web page* [online]. [cit. 9. 4. 2009]. <<http://langenbeck.webs.com>>.
- ČIHÁK, Radomír a Miloš GRIM. *Anatomie. 2.* 2. vydání. Praha : Grada Publishing, 2002. ISBN 80-247-0143-X.



Pancreas in relation to other organs.