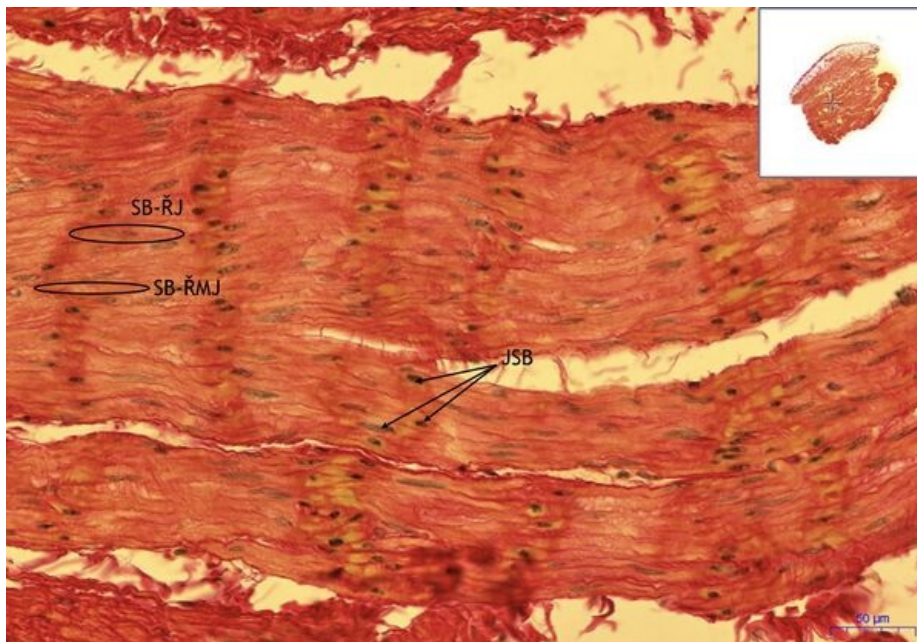


Smooth muscle - WvG

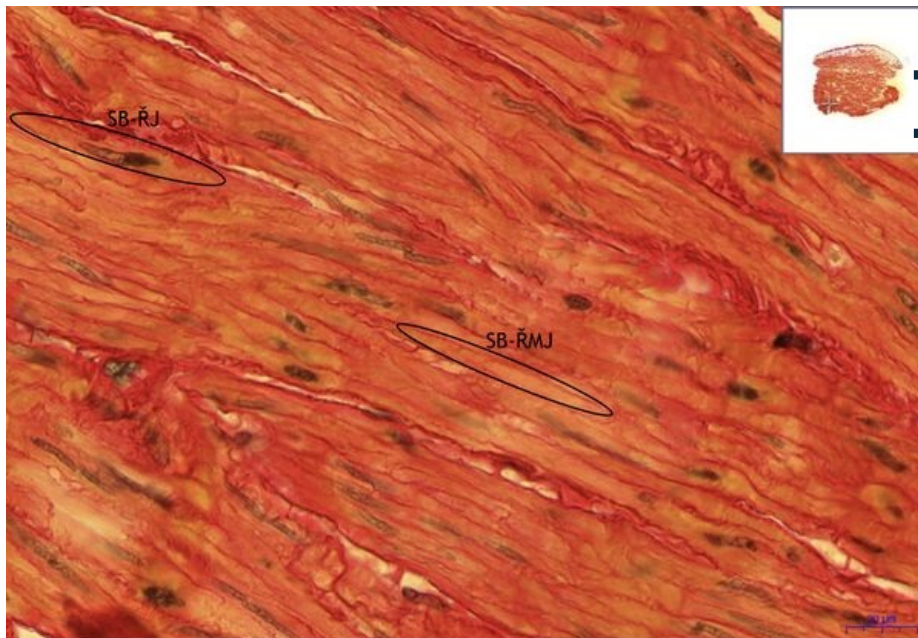
Urinary bladder, WvG 20x



Smooth muscle - longitudinal:

- **JSB** - muscle cell nucleus
- **SB (ŘMJ)** - muscle cell (section without nucleus)
- **SB (ŘJ)** - muscle cell (section with nucleus)

Urinary bladder, WvG 40x



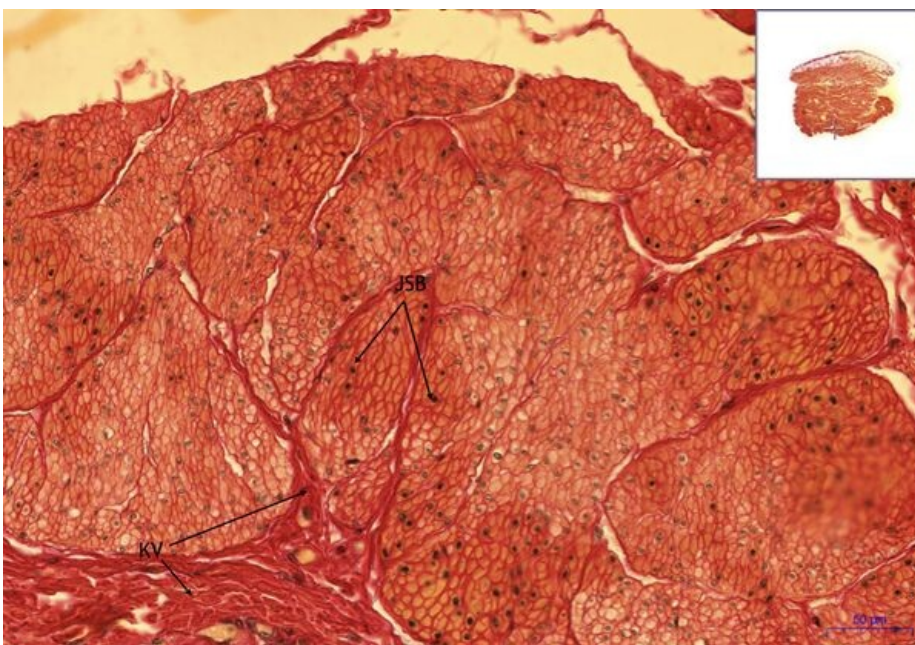
Smooth muscle - longitudinal:

- **SB (ŘMJ)** - muscle cell (section without nucleus)
- **SB (ŘJ)** - muscle cell (section with nucleus)

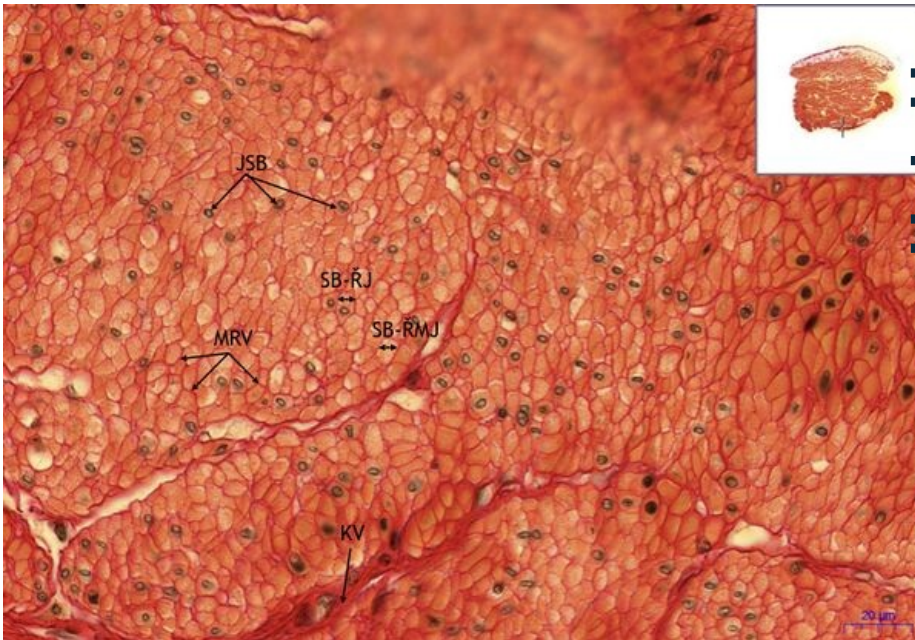
Urinary bladder, WvG 20x(2)

Smooth muscle - transversal:

- **JSB** - muscle cell nucleus
- **KV** - fibrous septa (perimysium)



Urinary bladder, WvG 40x (2)



Smooth muscle - transversal:

- **JSB** - muscle cell nukleus
- **SB (ŘMJ)** - muscle cell (section without nucleus)
- **SB (ŘJ)** - muscle cell (section with nucleus)
- **MRV** - intercellular reticular septa
- **KV** - fibrous septa (perimysium)