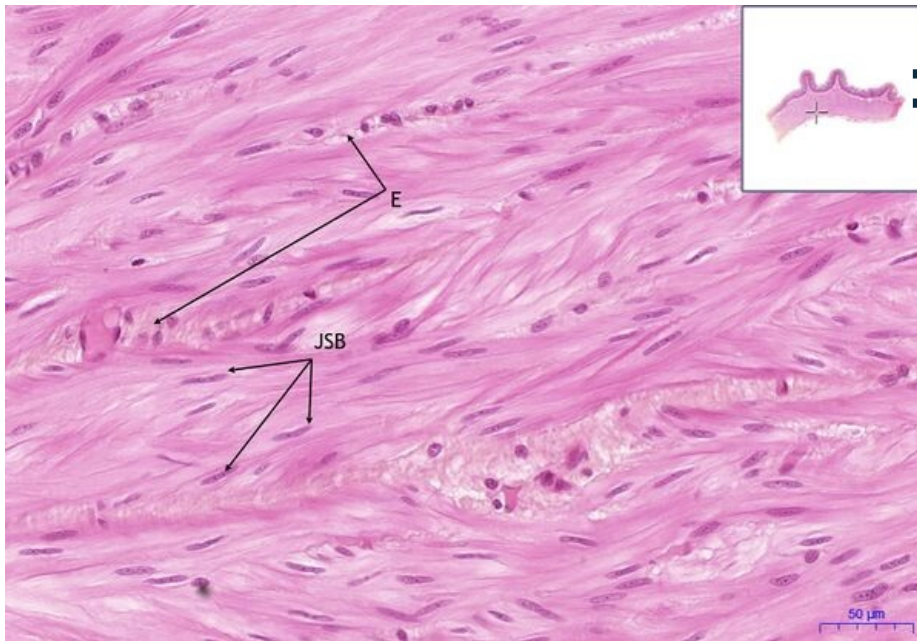


# Smooth muscle - HE

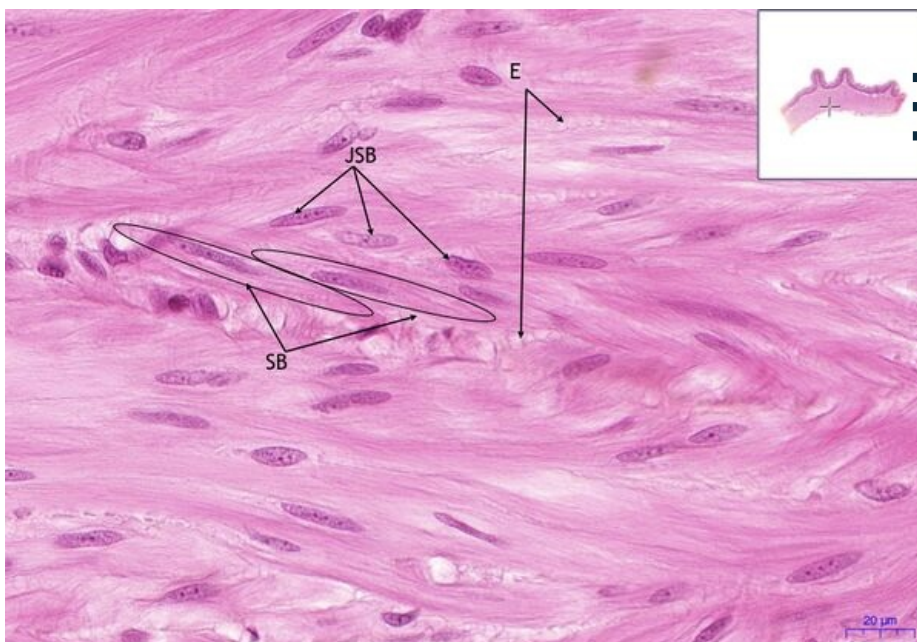
## Small intestine, HE 20x



### Smooth muscle - longitudinal:

- **JSB** - muscle cell nucleus
- **E** - endomysium

## Small intestine, HE 40x



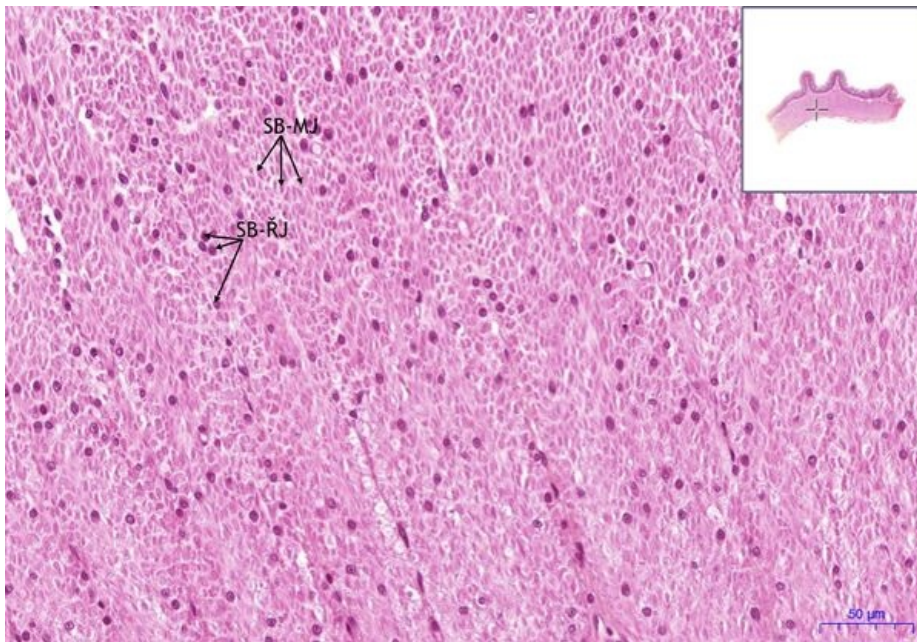
### Smooth muscle - longitudinal:

- **SB** - muscle cell
- **JSB** - muscle cell nucleus
- **E** - endomysium

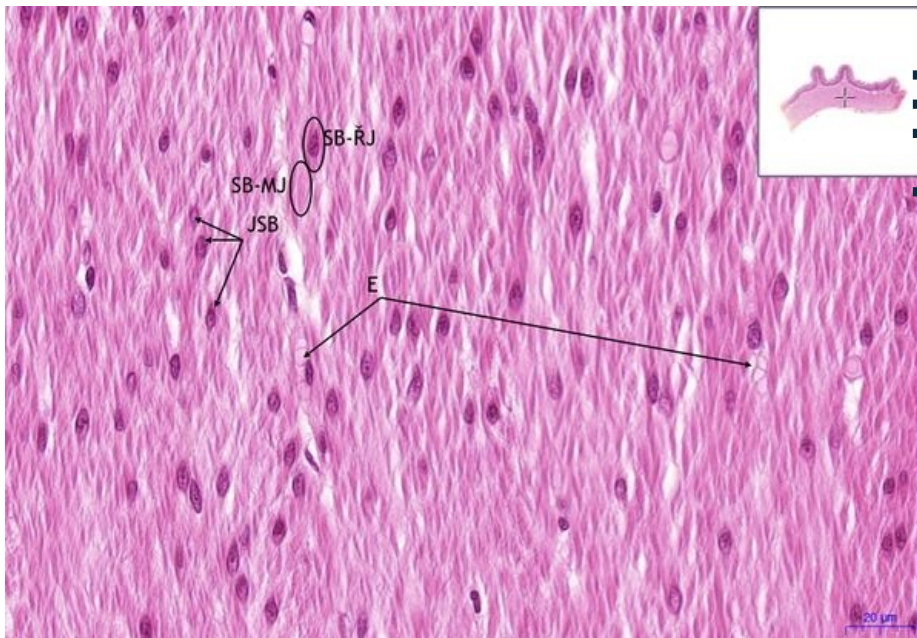
## Small intestine, HE 20x (2)

### Smooth muscle - transversal:

- **SB (MJ)** - muscle cell (section without nucleus)
- **SB (ŘJ)** - muscle cell (section with nucleus)



## Small intestine, HE 40x (2)



### Smooth muscle - transversal:

- **JSB** - muscle cell nucleus
- **E** - endomysium
- **SB (MJ)** - muscle cell (section without nucleus)
- **SB (ŘJ)** - muscle cell (section with nucleus)