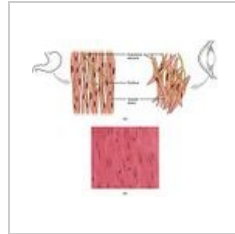


Smooth muscle (preparation)

Overview

Smooth muscle
4.jpg

Smooth muscle
3.jpg



Smooth
muscle2.jpg

Preparation 1

File:Smooth muscle 4.jpg

Name: Smooth muscle stained with (H+E)

Description: PLongitudinal section of smooth muscle. Smooth muscle cells are spindle-shaped with a nucleus in the middle. In the layers, the end of the cell, which is thinner and does not contain the nucleus, is attached to the middle part of the cell with the nucleus.

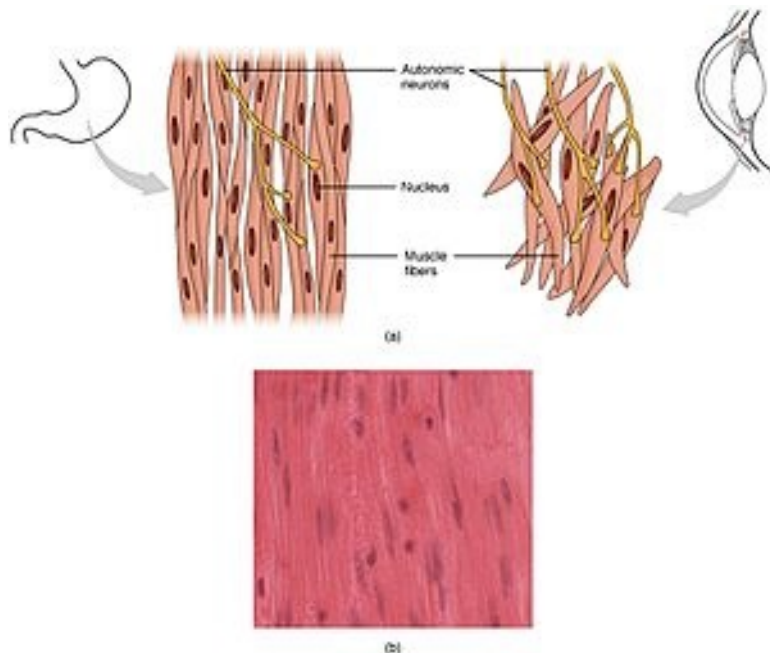
Preparation 2

File:Smooth muscle 3.jpg

Name: Smooth muscle stained with hematoxylin and eosin

Description: Transverse section of smooth muscle. The nucleus is in the center of the cell.

Preparation 3



Name: Smooth muscle cell

Description: Longitudinal section of smooth muscle.

Preparation 4

File:Smooth muscle 2.jpg

Name: Smooth muscle, higher magnification

Description: Smooth muscle on longitudinal section.

Muscles

- Smooth muscle (preparation)
- Cardiac muscle (preparation)
- Skeletal muscle (preparation)

Links

- Modul Buněčné základy medicíny (3. LF UK)

Study materials for preparations

- muscle

Kategorie:Histologie