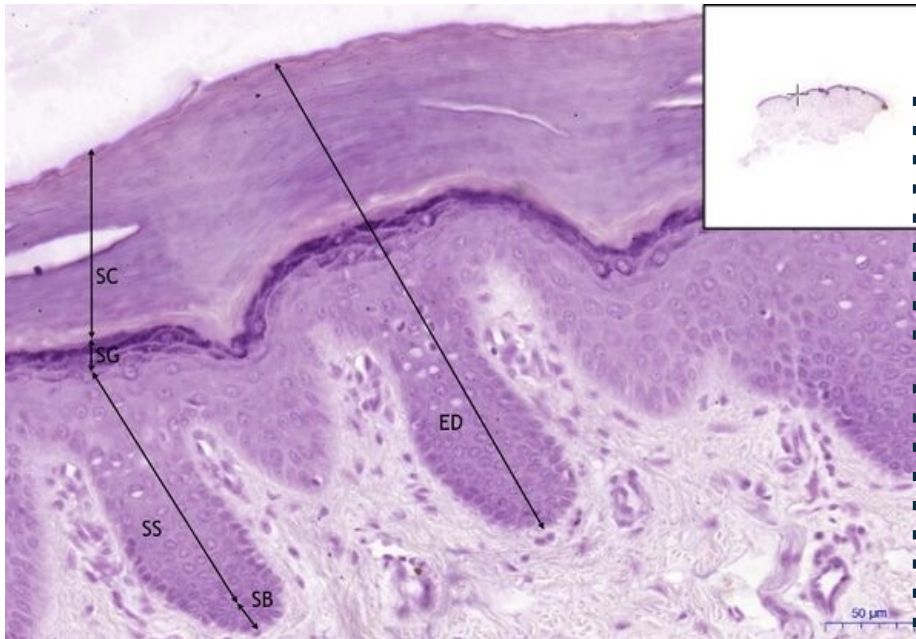


# Skin of the abdomen - HE

## Skin of the abdomen - HE, 20x



### Stratified squamous keratinized epithelium

- **ED** - squamous epithelium
- **SC** - stratum corneum
- **SG** - stratum granulosum
- **SS** - stratum spinosum
- **SB** - stratum basale

### Navigation: Epithelial tissue

← Slide 7 | List of the slides | Slide 9 →

### Navigation: Skin

← Slide K3 | List of the slides | Slide K5 →