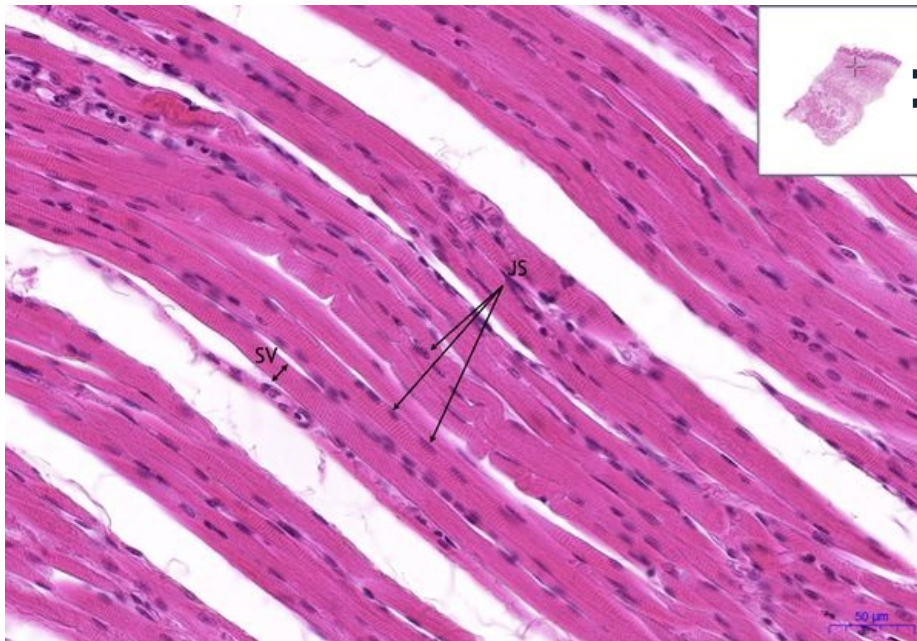


Skeletal muscle - HE

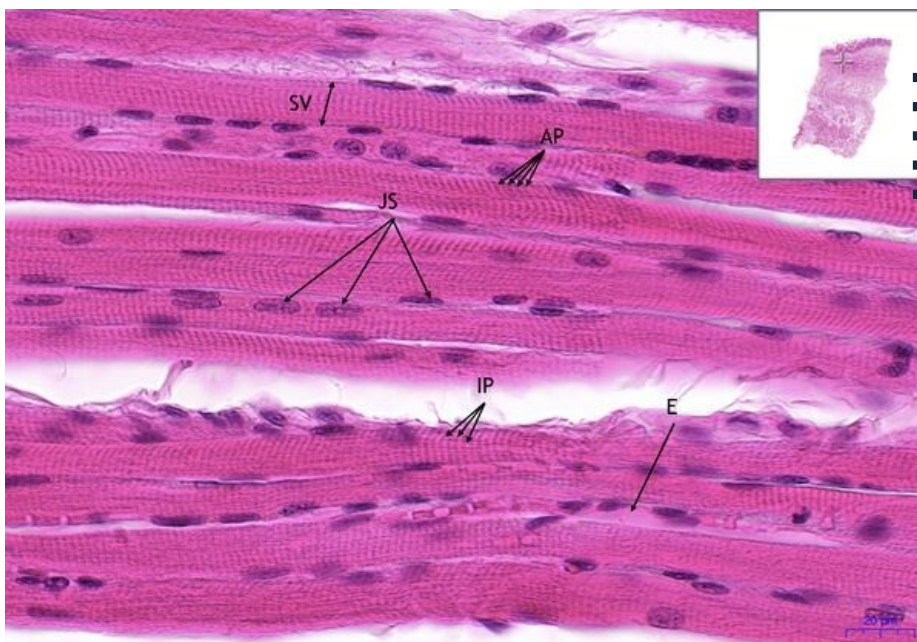
Tongue - radix, HE 20x



Skeletal muscle - longitudinal:

- JS - syncytium nucleus
- SV - muscle fibre

Tongue - radix, HE 40x



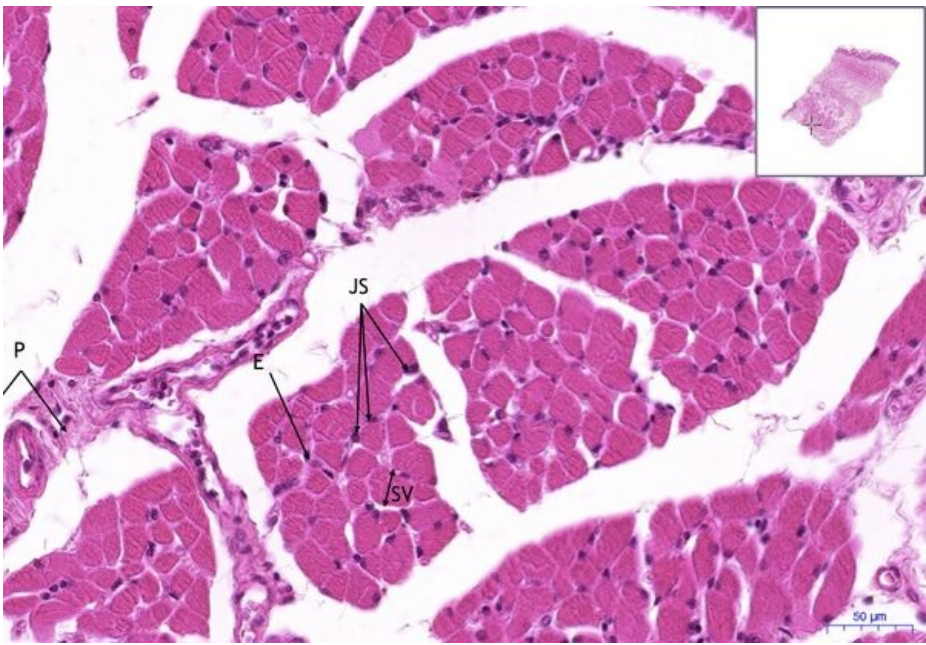
Skeletal muscle - longitudinal:

- JS - syncytium nucleus
- SV - muscle fibre
- AP - A band (dark)
- IP - I band (light)
- E - endomysium

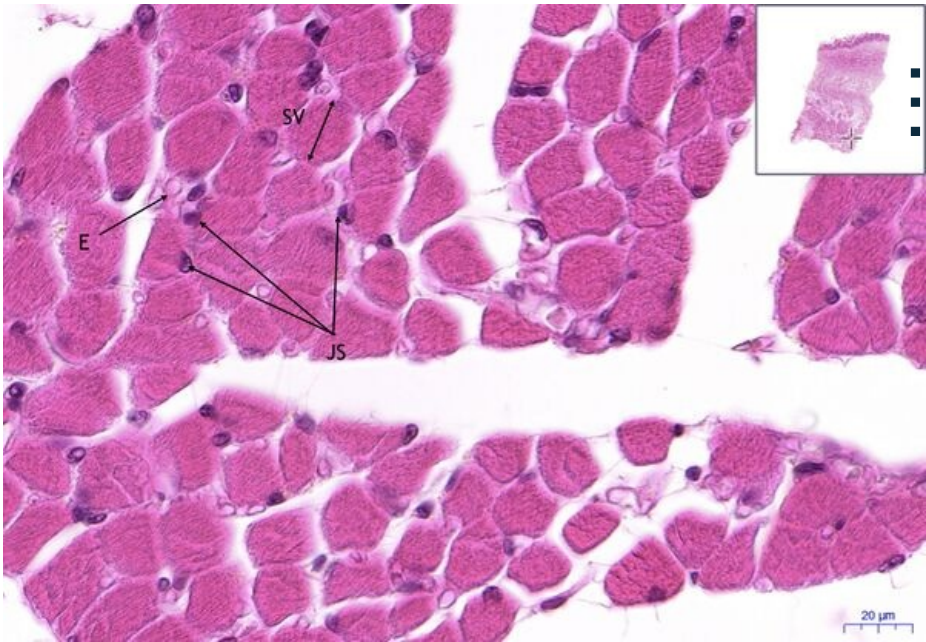
Tongue - radix, HE 20x (2)

Skeletal muscle - transverse:

- JS - syncytium nucleus
- SV - muscle fiber
- E - endomysium
- P - perimysium



Tongue - radix, HE 40x (2)



Skeletal muscle - transverse:

- JS - syncytium nucleus
- SV - muscle fibre
- E - endomysium

Navigation

Navigation: Muscle tissue

← Slide 42* | List of the slides | Slide 41 →