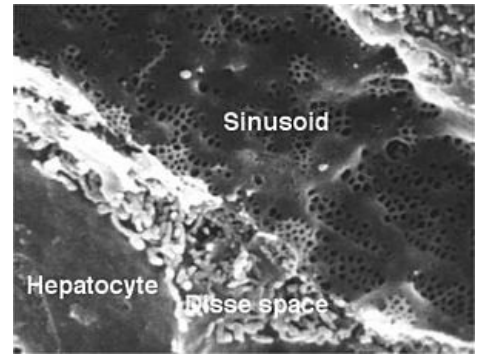


Sinusoidal Endothelial Cells

- form the wall of the blood vessels (sinusoids) that carry blood throughout the liver
- form a single layer with spaces between each cell known as fenestra, that allow an efficient flow of essential materials to pass from the blood to
- hepatocytes and vice versa
- are rich in lysosomal enzymes needed for degrading endocytosed material



Endothelial Cells of Liver