

Secondary tumors of the heart

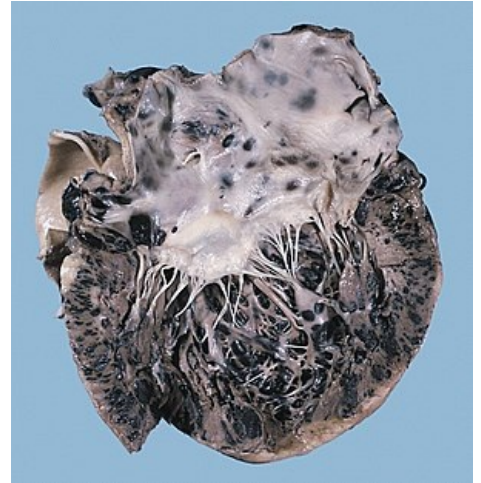
This is **a metastatic involvement of the heart:**

- no tumor (with the exception of malignant melanoma) metastasizes exclusively to the heart,
- *cardiac metastases:* malignant melanoma , bronchogenic carcinoma , breast carcinoma
- **clinically:** acute pericarditis, cardiac tamponade, rapid enlargement of the cardiac shadow, arrhythmia incl. atrioventricular blocks, rapid development of heart failure (however, 90% of metastases are clinically silent
- **therapy:** hl. palliation: pericardiocentesis for effusion, radiotherapy , chemotherapy

Links

References

- KLENER, P. *Internal Medicine*. 3. edition. Galén, 2006. ISBN 80-7262-430-X.



Malignant melanoma metastasizing to the heart