

# Secondary heart tumors

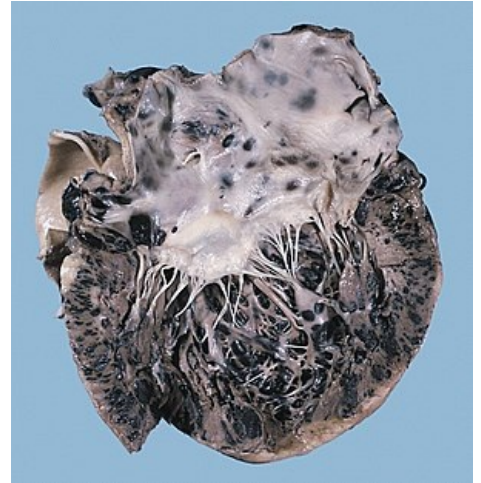
This is **metastatic heart disease**:

- no tumor (except malignant melanoma) metastasizes exclusively to the heart,
- *cardiac metastases*: malignant melanoma, bronchogenic carcinoma, breast carcinoma,
- **clinically**: acute pericarditis, cardiac tamponade, rapid enlargement of the heart shadow, arrhythmias incl. atrioventricular block, rapid development of heart failure (but 90% of clinically silent metastases),
- **therapy**: palliation: pericardiocentesis in effusion, radiotherapy, chemotherapy.

## Links

## References

- KLENER, P. *Vnitřní lékařství*. 3. edition. Galén, 2006. ISBN 80-7262-430-X.



Malignant melanoma metastasizing to the heart