

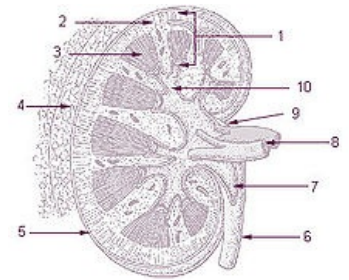
Renal hilum

The place on *the margo medialis* of the kidney where the blood vessels and the urinary tract enter and exit. Its retracted place, referred to as sinus renalis, is located in the middle of the inner edge of the kidney. the renal artery enters the sinus and hilum - it borders the caudally located renal pelvis with its branches.

Links

References

- ČIHÁK, Radomír. *Anatomie 1*. 2. edition. Praha : Grada Publishing, a.s., 2008. 516 pp. vol. 1. ISBN 80-7169-970-5.



Hilum renale (under number 9)