

Quadriceps femoris muscle

Beginning:

1. *m. rectus femoris* - *spina iliaca anterior inferior*; (caput rectum et caput reflectum)
2. *m. vastus medialis* – *labium mediale lineae asperae*;
3. *m. vastus intermedius* - front surface of the femur, distal to the *linea intertrochanterica*; part of the muscle fibers is clamped directly into the joint sheath, thus preventing it from twisting - *m. articularis genu*
4. *m. vastus lateralis* – *labium laterale lineae asperae* and *linea intertrochanterica* - its proximal part

Attachment: *tuberositas tibiae (ligamentum patellae)*

Innervation: *n. femoralis* (from L₂–L₄)

Function:

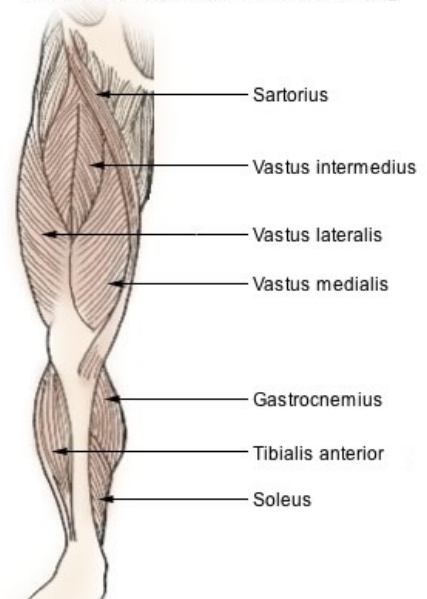
1. hip joint – flexion;
2. knee joint – extension.

Links

References

- VIGUÉ, Jordi. *Atlas of the Human Body*. 3. edition. Rebo, 2007. ISBN 978-80-7234-881-7.
- ŠIHÁK, Radomír – GRIM, Miloš. *Anatomy*. 2nd, edit. and add edition. Grada Publishing, 2002. 470 pp. ISBN 80-7169-970-5.

Muscles of the Lower Extremity



Quadriceps femoris muscle