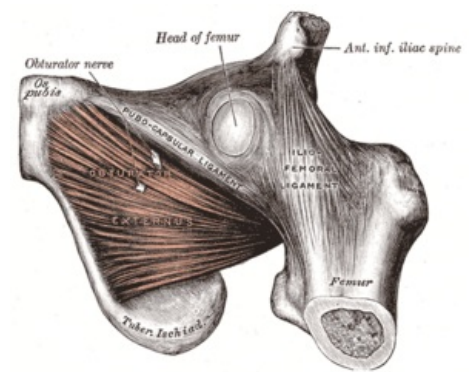


## Pubic bone

The **os pubis** consists of three parts:

- The body, the *corpus ossis pubis*, is located at the symphysis and thus participates in the ventral boundary of the *foramen obturatum*;
- the upper arm, the *ramus superior*, connects the symphysis with the acetabulum;
- The lower arm, the *ramus inferior*, continues caudally from the symphysis and dorsally, meeting *the ramus ossis ischii*.



## Structures of the pubic bone

## Facies symphysialis

a roughened patch on the ventromedial side of the bone, to which the pubic symphysis is attached

## Symphysis pubica

which connects the right and left pubic bone

## Pecten ossi pubis

pubic crest, cranial

## Pubic tubercle

symphysis bump, pubic ridge ending

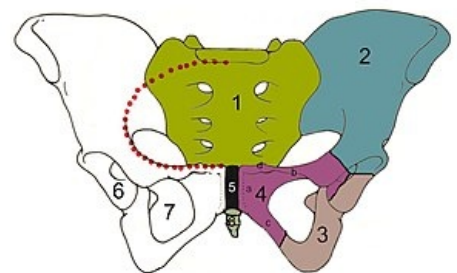
## Sulcus obturatorius

groove on the ramus superior, through which the eponymous nerve and blood vessels run

## Phalica crest

Rough line ventromedially to the ramus inferior, here clamp erectile bodies in both sexes, in men it is more noticeable.

Os pubis	
<b>HE</b>	A02.5.01.301
<b>Articulating bones</b>	druhostranná os pubis, acetabulum, os ischii
<b>Type of articulation</b>	symphysis pubica-cartilaginous connection



Pelvic bones: 1 - *os sacrum* , 2 - *os ilium* , 3 - *os ischii* , 4 - *os pubis*

## Links

## Related Articles

- Pelvis
- Seat bone
- Hip-bone

## Bibliography

- PETROVICKÝ, Pavel, et al. *Anatomie s topografií a klinickými aplikacemi : Pohybové ústrojí*. 1. edition. Martin : Osveta, 2001. 463 pp. vol. 1. ISBN 80-8063-046-1.
- ČIHÁK, Radomír – GRIM, Miloš. *Anatomie*. 2., uprav. a dopl edition. Praha : Grada Publishing, 2002. 470 pp. vol. 2. ISBN 80-7169-970-5.