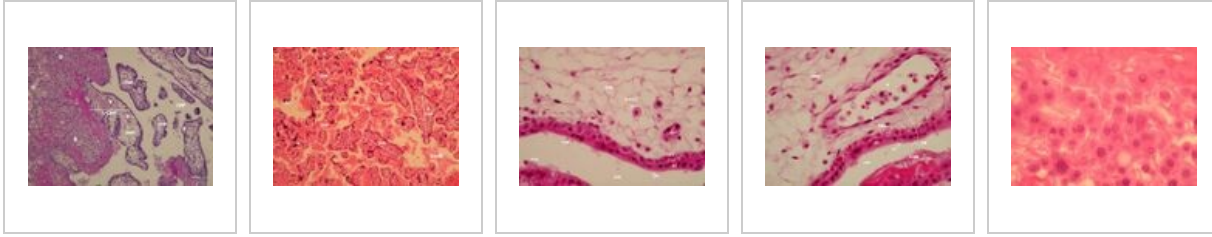
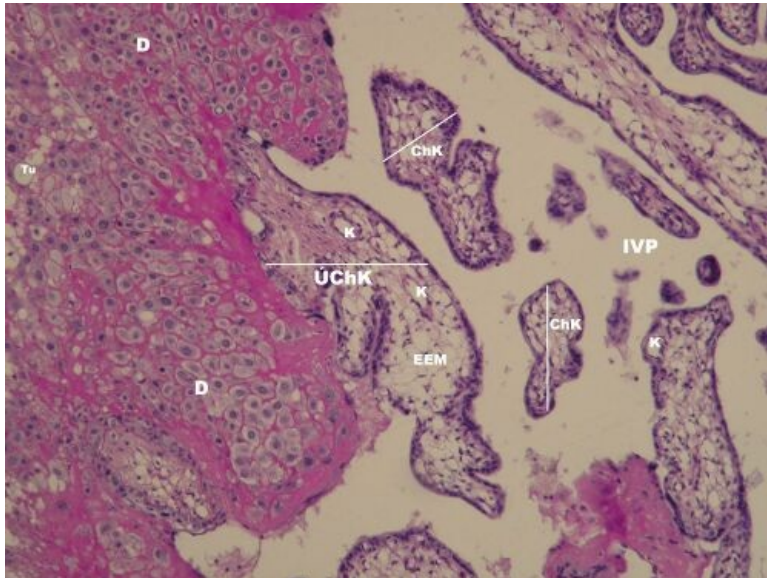


Placenta (SFLT)

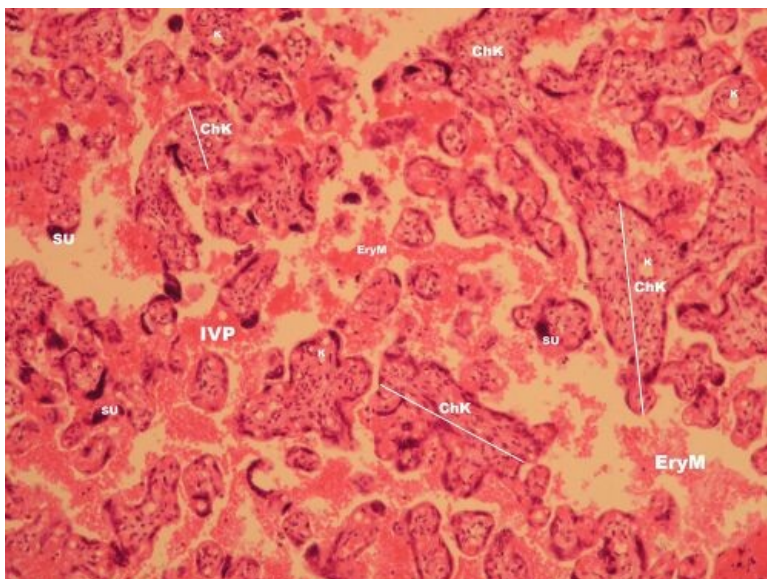


Placenta - composition (HE)



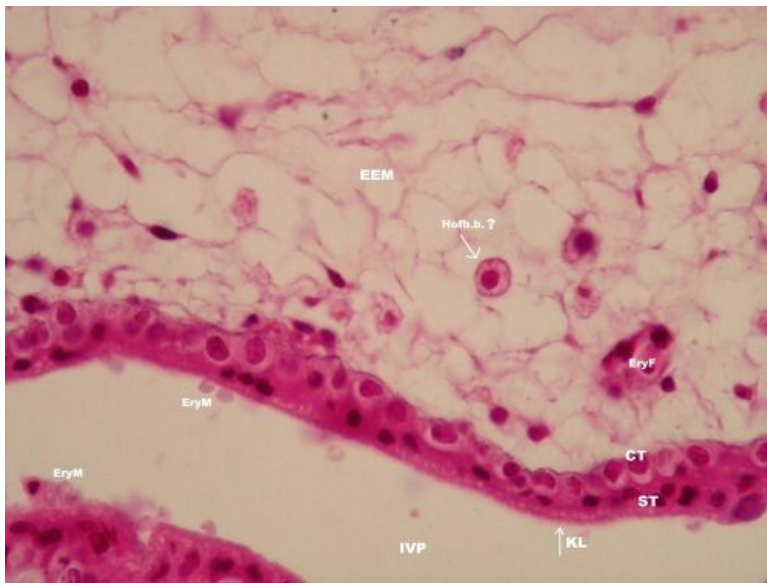
Description: D - decidua (pars materna placentae), ÚChK - attachment chorionic villus (pars fetalis placentae), ChK - free chorionic villus (pars fetalis placentae), EEM - extraembryonic mesoderm, K - chorionic villus capillary with fetal erythrocytes, IVP - intervillous space with maternal erythrocytes, Tu - a single fat cell.

Placenta, chorionic villi - overview (HE)



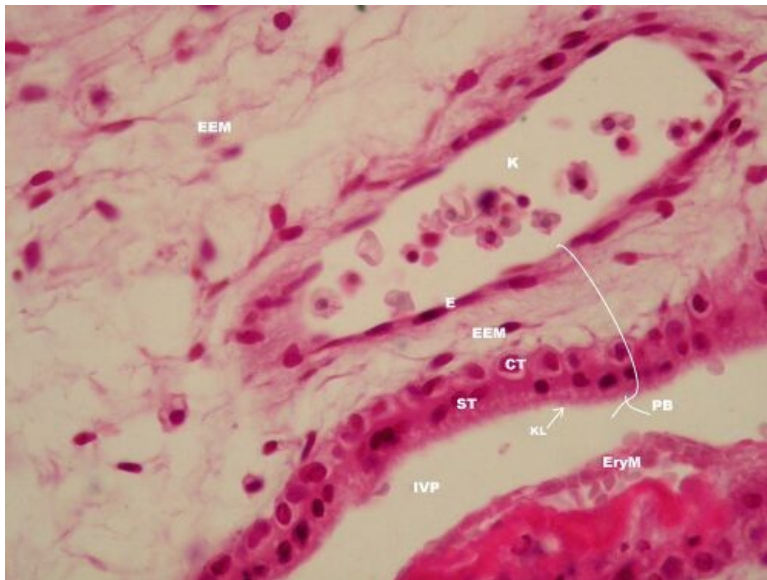
Description: ChK - chorionic villus, SU - syncytial node, K - chorionic villus capillary with fetal erythrocytes, IVP - intervillous space with maternal erythrocytes (EryM).

Intervillous space and chorionic villus (HE)



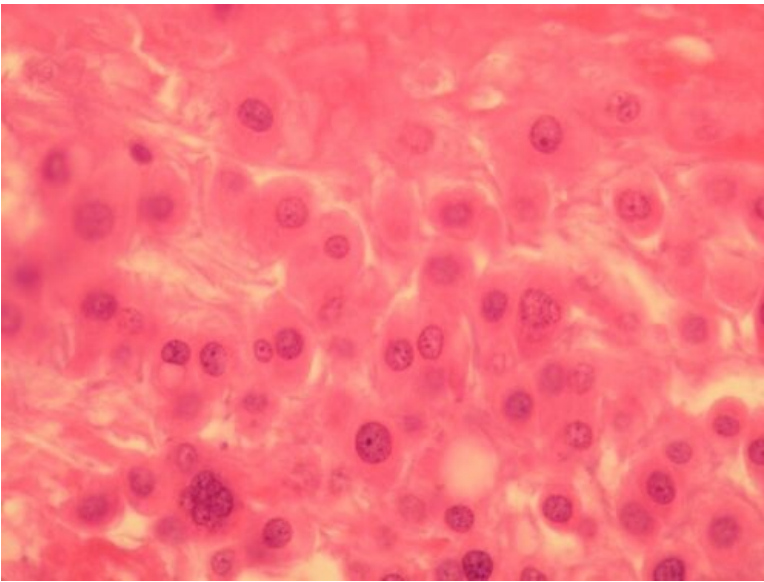
Description: IVP -intervillous space with maternal blood, EryM - erythrocytes of maternal blood, CT - cytotrophoblast, ST - syncytiotrophoblast, KL - brush border of syncytiotrophoblast, EEM - extraembryonic mesoderm, EryF - erythrocytes of fetal blood in the capillary of the chorionic villus, Hofb.b. - may be a Hofbauer cell (a large spherical macrophage typical of the chorionic villus).

Placental barrier (HE)



Description: PB – the placental barrier (shown as a loop) includes: endothelium of the capillary (K) of the chorionic villus, basement membrane of the capillary endothelium, EEM - extraembryonic mesoderm, basement membrane of cytotrophoblast, CT - cytotrophoblast, ST - syncytiotrophoblast, KL - brush border of syncytiotrophoblast, EryM - erythrocytes of maternal blood in the intervillous space (IVP).

Decidua - pars materna placentae (HE)



Description: Decidual cells – endometrial fibroblasts transformed by progesterone, spherical cells rich in glycogen and lipids (primary source of nutrition for the implanting embryo).

Amniotic sac

- Umbilical cord (SFLT)
- Amniotic sac (SFLT)
- Placenta (SFLT)
- Chorion frondosum (SFLT)

Resources

- Histologický atlas (3. LF UK)