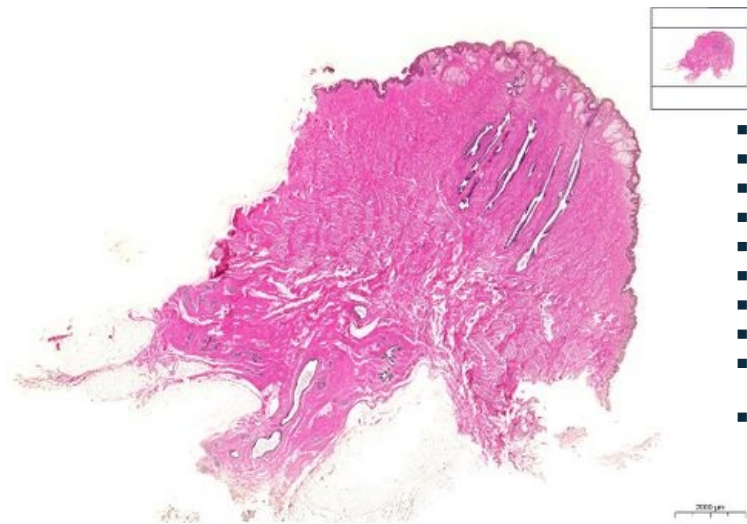


Pigmented skin of scrotum - HE

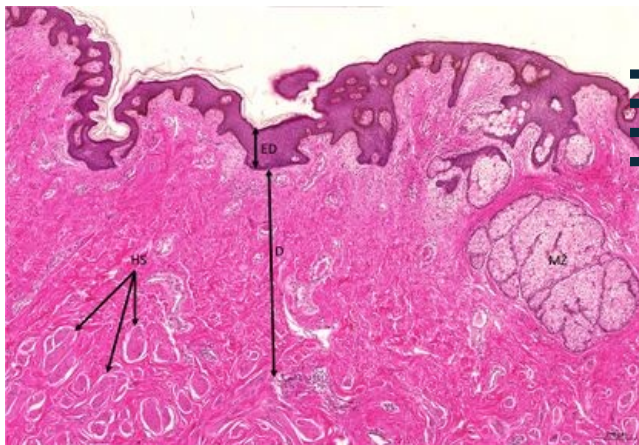
Skin, thin type, pigmented HE 0,7x



Skin, thin type, pigmented HE 0,7x
(areola mammae, nipple)

- 1. ED - stratified squamous epithelium - keratinized
- a) SS - stratum spinosum
- b) SB - stratum basale
- c) P - strongly pigmented stratum basale
- 2. D - dermis
- a) PP - pars papillaris
- b) PR - pars reticularis
- 3. MŽ - sebaceous
- 4. HS - smooth muscle
-

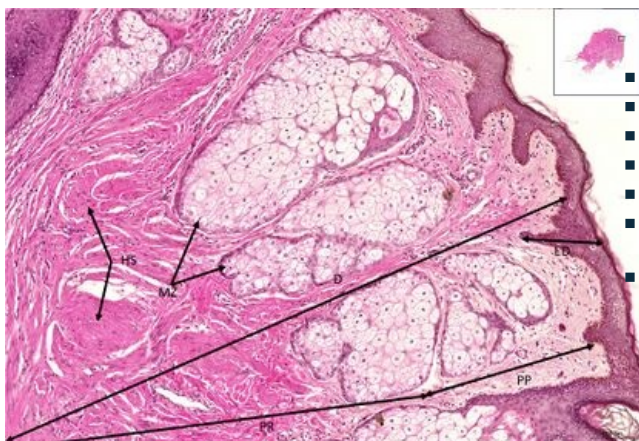
Skin, thin type, pigmented HE 5x



Skin, thin type, pigmented HE 5x

- 1. ED - stratified squamous epithelium - keratinized
- 2. D - dermis
- 3. MŽ - sebaceous
- 4. HS - smooth muscle

Skin, thin type, pigmented HE 10x

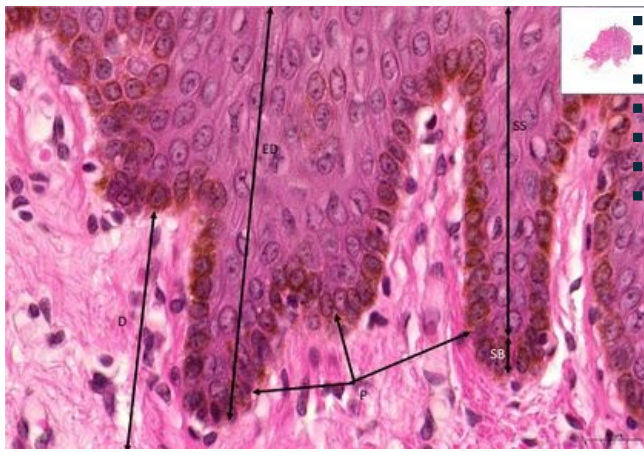


Skin, thin type, pigmented HE 10x

- 1. ED - stratified squamous epithelium - keratinized
- 2. D - dermis
- a) PP - pars papillaris
- b) PR - pars reticularis
- 3. MŽ - sebaceous
- 4. HS - smooth muscle
-

Skin, thin type, pigmented HE 63x

Skin, thin type, pigmented HE 63x



- 1. **ED** - stratified squamous epithelium - keratinized
- a) **SS** - stratum spinosum
- b) **SB** - stratum basale
- c) **P** - strongly pigmented stratum basale
- 2. **D** - dermis

Navigation: Skin

← Slide K4 | List of slides | Slide K7 →