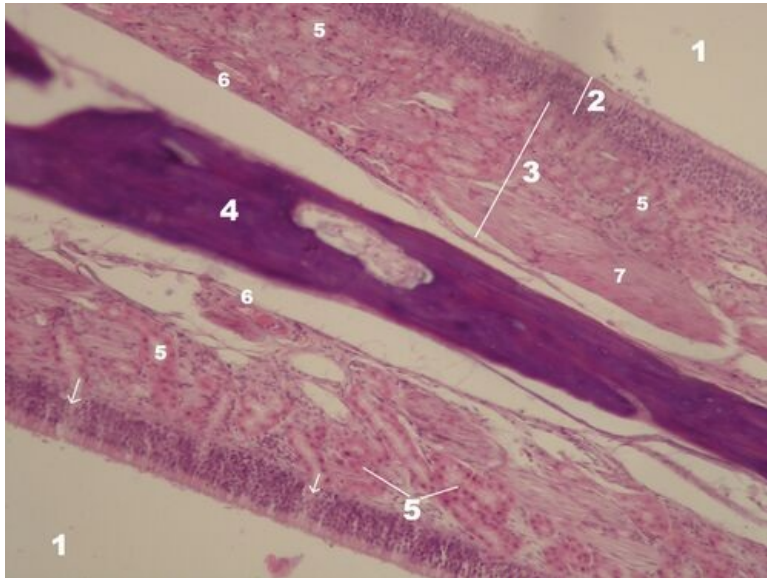


# Pars olfactoria mucosae nasi (SFLT)

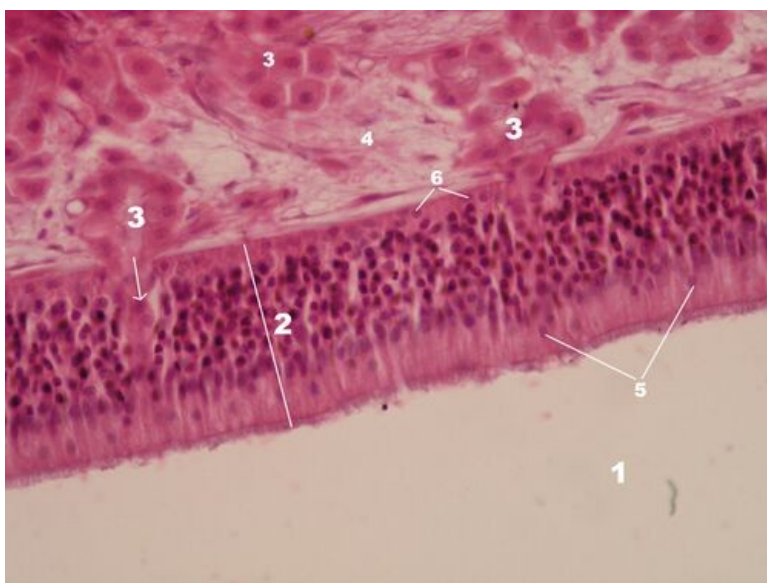


## Regio olfactoria - overview (HE)



**Description:** 1 - lumen of the nasal cavity, 2 - multi-row cylindrical epithelium, 3 - lamina propria, 4 - bone of the nasal septum, 5 - glandula olfactoria Bowmani - tubuloalveolar mucous glands (arrows show its exit to the surface of the epithelium), 6 - vessels in the lamina propria, 7 - nerve fibers.

## Mucous membrane in regio olfactoria - detail (HE)



**Description:** 1 - lumen of the nasal cavity, 2 - multi-row cylindrical epithelium, 3 - glandula olfactoria Bowmani - tubuloalveolar mucous glands (the arrow points to its outlet on the surface of the epithelium), 4 - lamina propria, 5 - nuclei belonging to supporting cells of the epithelium, 6 - nuclei belonging to the basal cells of the epithelium, between them and the nuclei of the supporting cells are the nuclei of bipolar olfactory cells.

## Sense Organs

- Pars olfactoria mucosae nasi (SFLT)
- Organum vestibulocochleare (SFLT)
- Bulbus oculi (SFLT)
- Optic Nerve (SFLT)
- Muscle spindle (SFLT)

## Links

- Histological atlas (3. LF UK)