

One-dimensional echocardiography

It shows the time course of the motion of the cardiac structures crossed by the ultrasound beam. Its importance is currently declining.

Uses:

1. measurement of cardiac compartment size + ventricular wall thickness,
2. assessment of contractility of the imaged parts of the myocardium,
3. assessment of motion + valve structure.^[1]

Links

Related articles

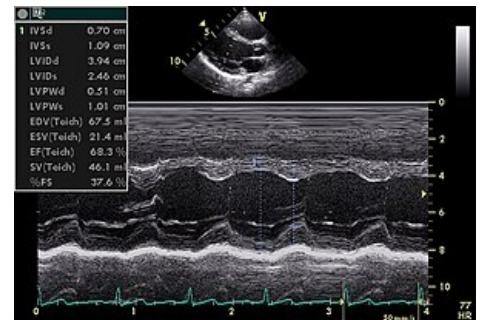
- Echocardiography
- Stress testing of the cardiovascular system

References

1. DÍTĚ, P.. *Vnitřní lékařství*. 2. edition. Praha : Galén, 2007. ISBN 978-80-7262-496-6.

Source

- ws:Jednorozměrná echokardiografie



Left ventricular M-mode longitudinal parasternal view.