

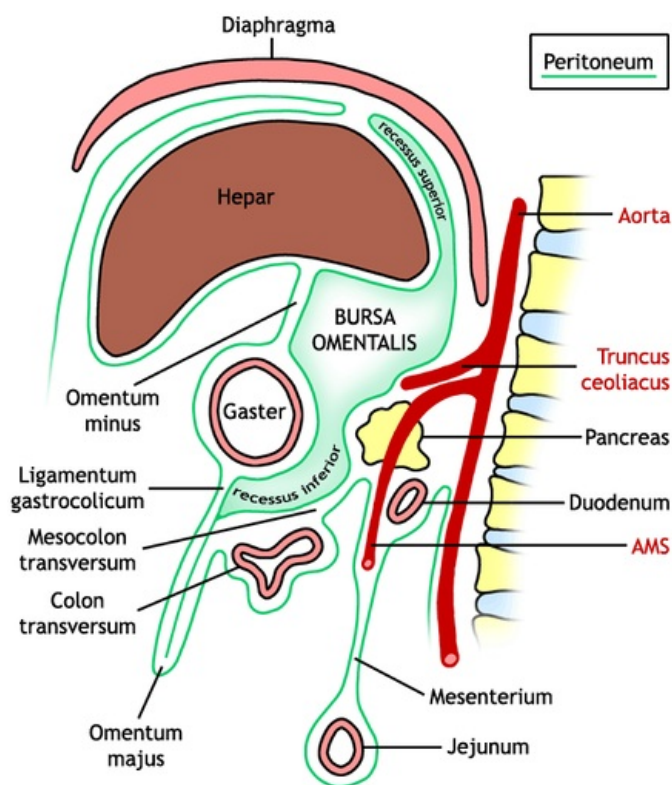
Omental bursa

Bursa omentalis is a blind pocket behind *the omentum minus* and behind the stomach in the posterior part of the supramesocolic part of the peritoneal cavity. The entrance to the bursa omentalis is called **the foramen omentale**.

Boundaries of bursa omentalis :

- **ventrally**: the stomach and its hinges, i.e. *the omentum minus* (arising from *the mesogastrium ventrale*) and *lig. gastrocolicum* (part of *the omentum majus* arising from *the mesogastrium dorsale*);
- **dorsally**: parietal peritoneum, behind which are the duodenum, pancreas, diaphragm, left kidney and adrenal gland;
- **cranially**: visceral surface of the liver, left diaphragmatic vault;
- **caudally**: *colon transversum* and its hinge – *mesocolon transversum*;
- **left**: spleen and its hinges, i.e. *lig. gastrophrenicum*, *lig. gastrolienale*, in which *aa. gastricae breves*, *lig. phrenicolienale* and *lig. phrenicocolicum*;
- **right**: entrance to *the omental bursa* called *the foramen omentale (epiploicum) of Winslow* (communication between the bursa and the *spatium subhepaticum dextrum* – the so-called Morrison's space).

Bursa omentalis - sagitální řez



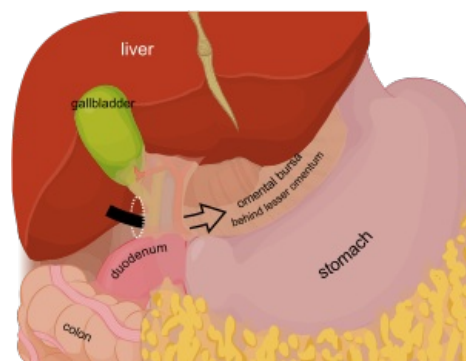
Omental bursa

Boundary of the foramen omentale :

- ventrally: *lig. hepatoduodenale*, through which *v. portae* (back), *a. hepatica propria* (front left) and *ductus choledochus* (front right);
- dorsally: *v. cava inferior* and *lig. hepatorenale*;
- cranial: *lobus caudatus hepatis*;
- caudally: upper edge of *pars superior duodeni* and non-constant peritoneal fold – *lig. duodenorenale*.

Parts of bursa omentalis :

1. **vestibulum** – between *the minus omentum* and the head of the pancreas, up from it behind the liver, between the esophagus and *the inferior vena cava*, *the recessus superior* extends;
2. **isthmus** – is conditioned by the curvature of the pancreas and liver in *the omental tubera*, peritoneal folds with blood vessels emerge from *the omental tubera* (*plica hepatopancreatica* – contains *a. hepatica communis*, *plica gastropancreatica* – contains *a. gastrica sinistra*);
3. **own bursa omentalis** – runs in *the recessus superior* (cranially between the liver and the esophagus), *the recessus inferior* (between the stomach and *the mesocolon transversum*) and in the *recessus lienalis* (to the left of the hilum of the spleen and along the upper side of the pancreas, where *the a. lienalis* runs in the peritoneal fold – *plica pancreaticolienalis*).



Omental bursa

Links

related articles

- Peritoneum

- Omental foramen
- Surgical approaches to the pancreas

References

- GRIM, Miloš – DRUGA, Rastislav. *Základy anatomie : 5. Anatomie krajín těla*. 1. edition. Galén, 2008. ISBN 978-80-7262-179-8.