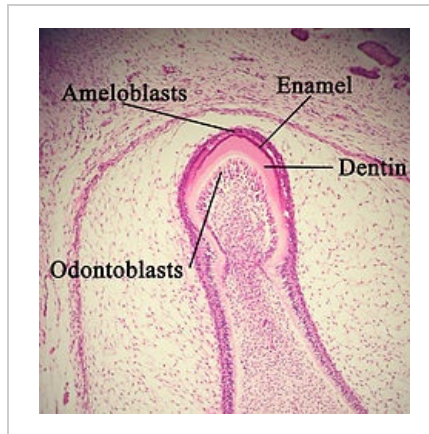
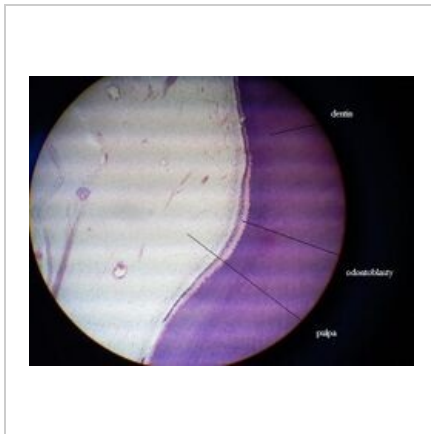


# Odontoblast

**English: *Odontoblasts*** are slender cylindrical cells of epithelioid character. They line the cavum pulpa (the pulp cavity of the tooth). They are oriented with their apex towards the dentin. Apically they have secretory granules from which they exocytosis expel the basic substance of dentin. The nuclei, on the other hand, are deposited at the opposite end of the cells, i.e. on the basal side.



## Links

### Related articles

- Cementum
- Enamelum
- Hard dental tissues
- Teeth

### External links

- [Odontoblast \(Czech Wikipedia\)](#)
- [Odontoblast \(English Wikipedia\)](#)

### References used

- KLIKA, Eduard, et al. *Histologie pro stomatology*. 1. edition. Praha : Avicenum, 1988. 448 pp.
- JUNQUEIRA, L. Carlos – CARNEIRO, José – KELLEY, Robert O. *Základy histologie*. 1. v ČR edition. Jinočany : H & H, 1997. 502 pp. ISBN 80-85787-37-7.