

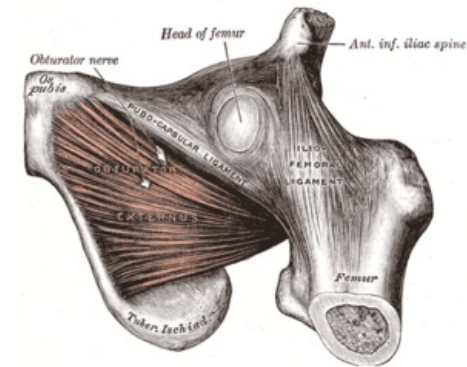
Obturator externus muscle

Origin: external surface obturator membrane.

Insertion: fossa trochanterica.

Innervation: n. obturatorius (r. posterior).

Function: external rotation, adduction at hip joint.

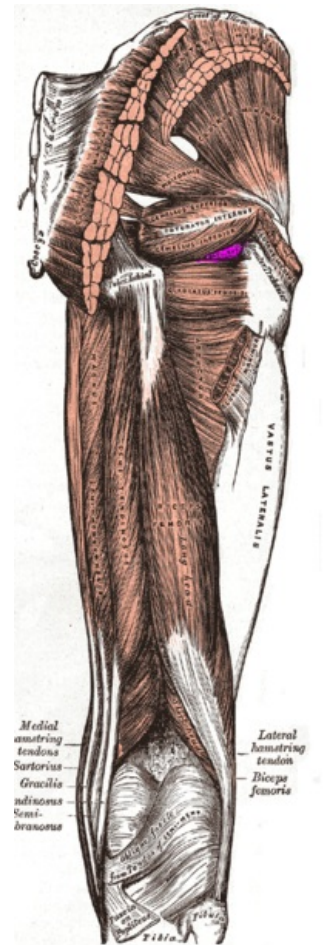


M. obturatorius externus

Links

References

- ŠIHÁK, Radomír – GRIM, Miloš. *Anatomy*. 2nd, edit. and add edition. Grada Publishing, 2002. 470 pp. vol. 1. ISBN 80-7169-970-5.
- VIGUÉ, Jordi. *Atlas of the Human Body*. 3. edition. Rebo, 2007. ISBN 978-80-7234-881-7.



Obturator externus