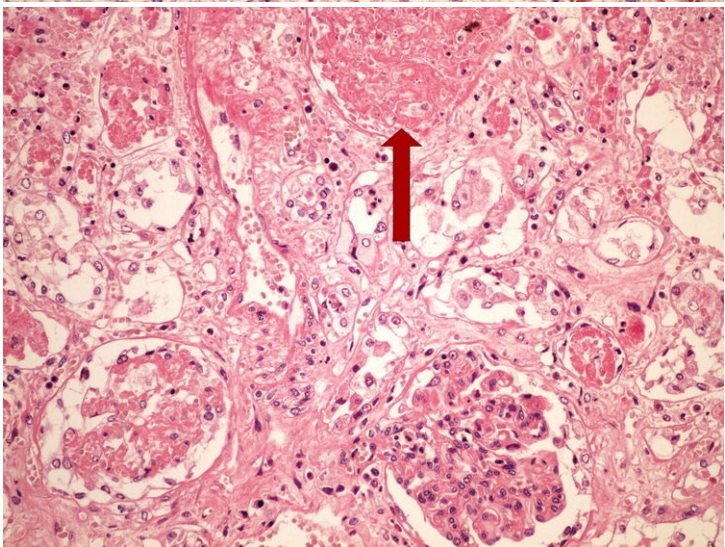
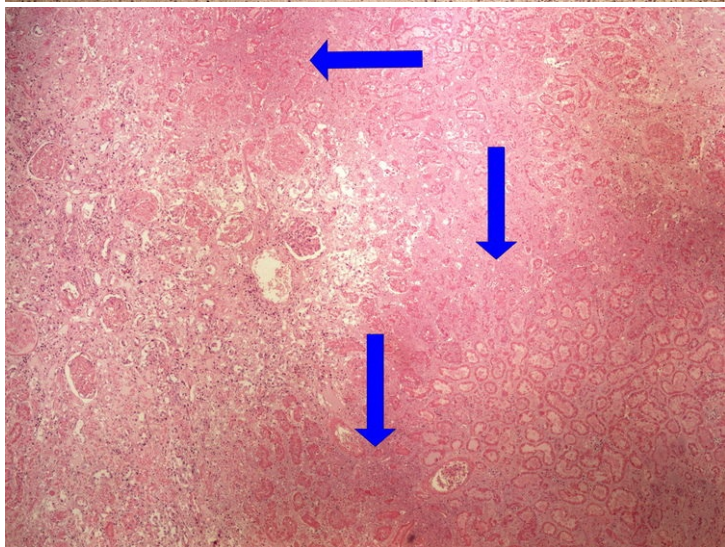
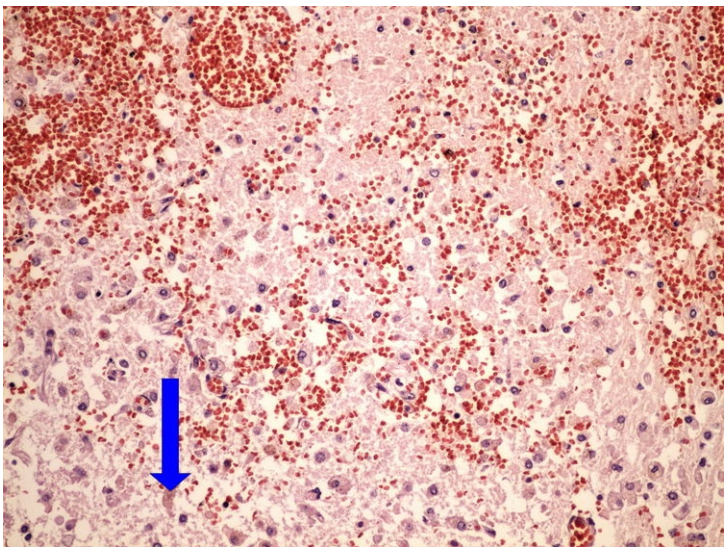
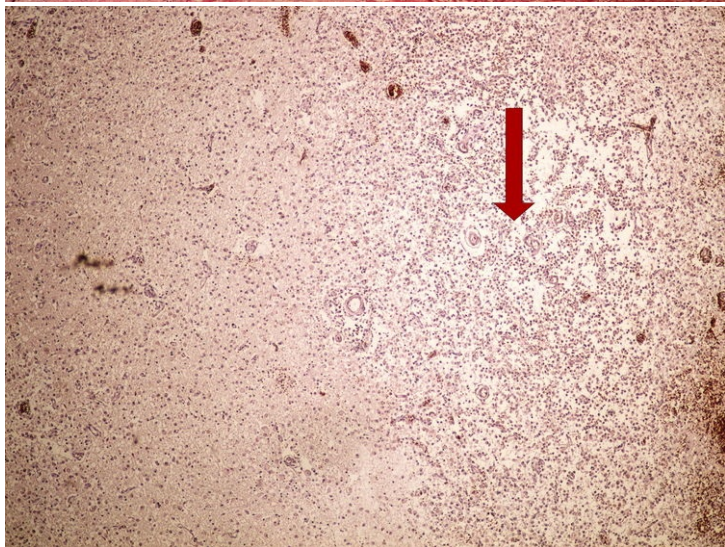
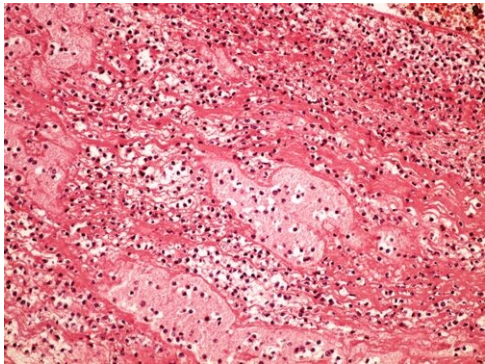
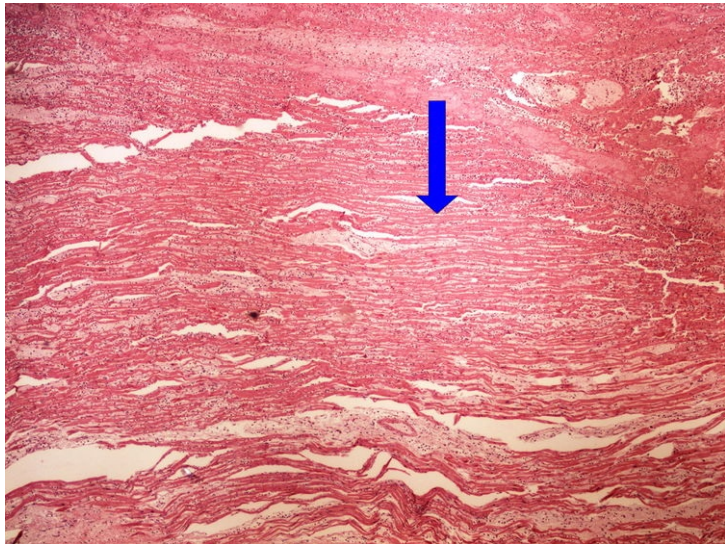
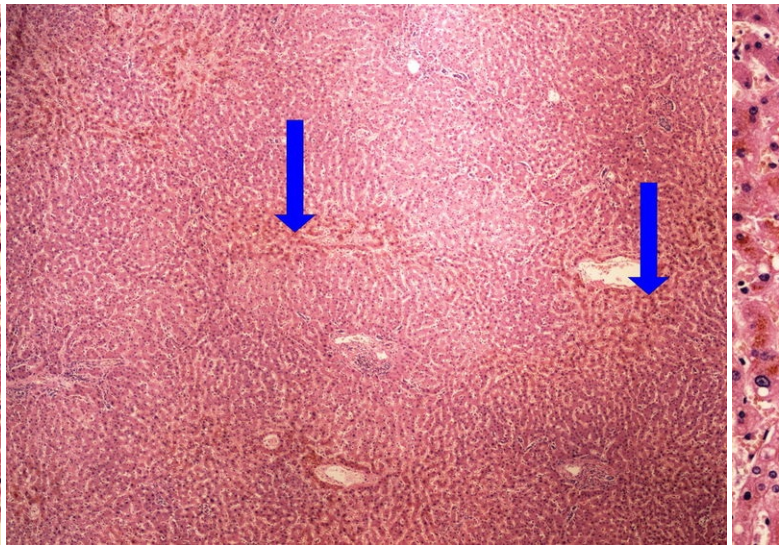
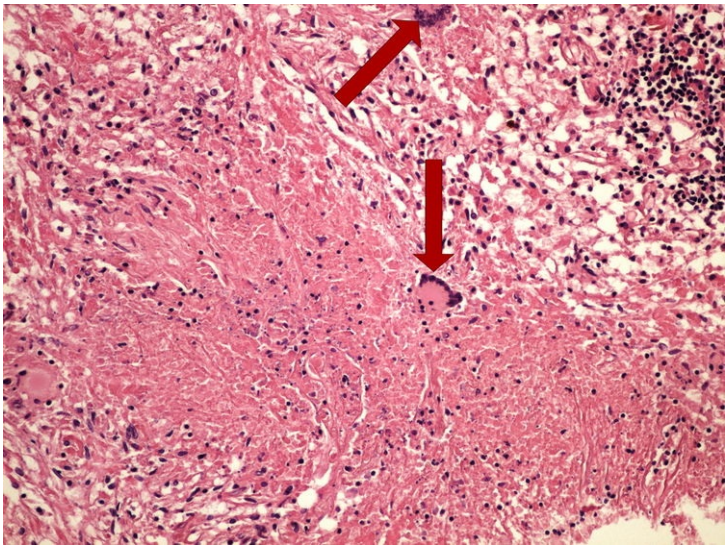
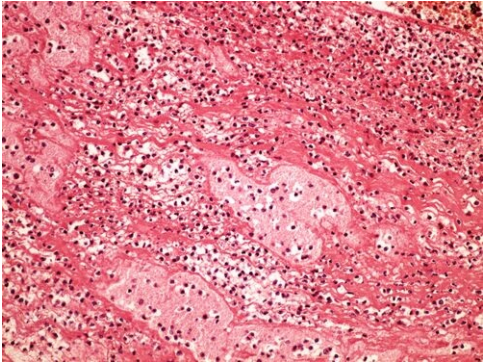
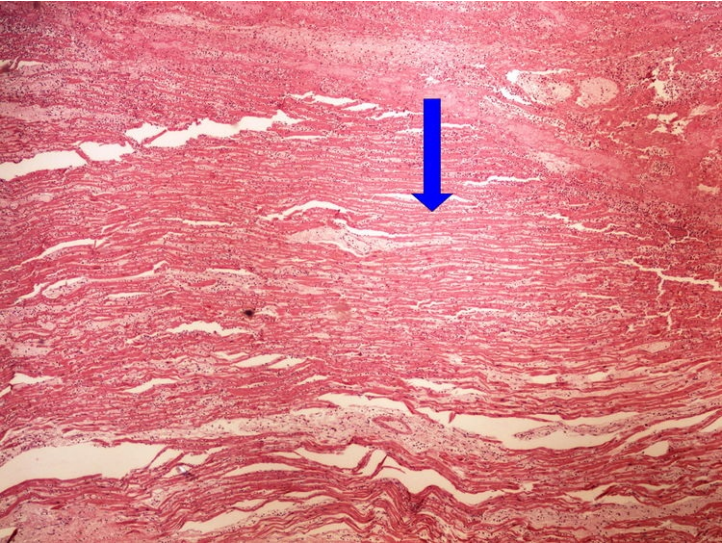


OZPP module - Practicum No. 2



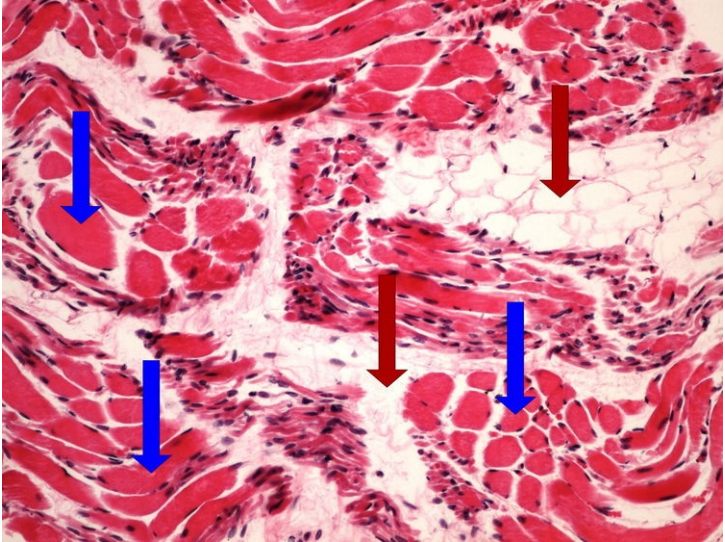
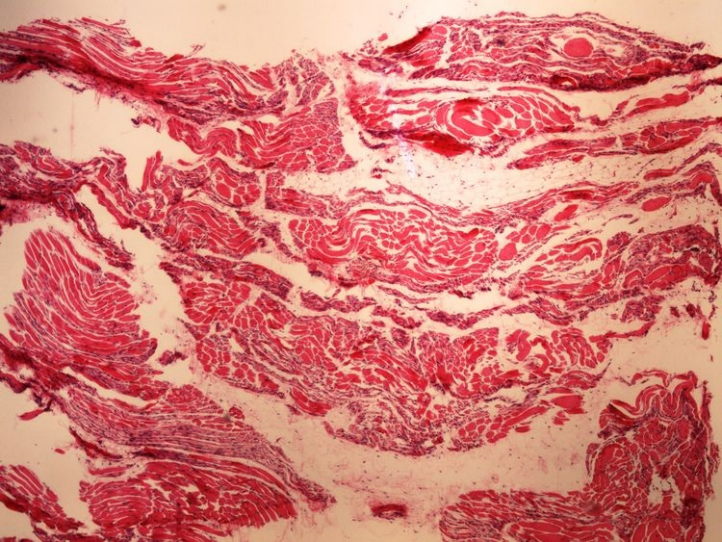


Preparation No. 1 and No. 2 - myocardial infarction



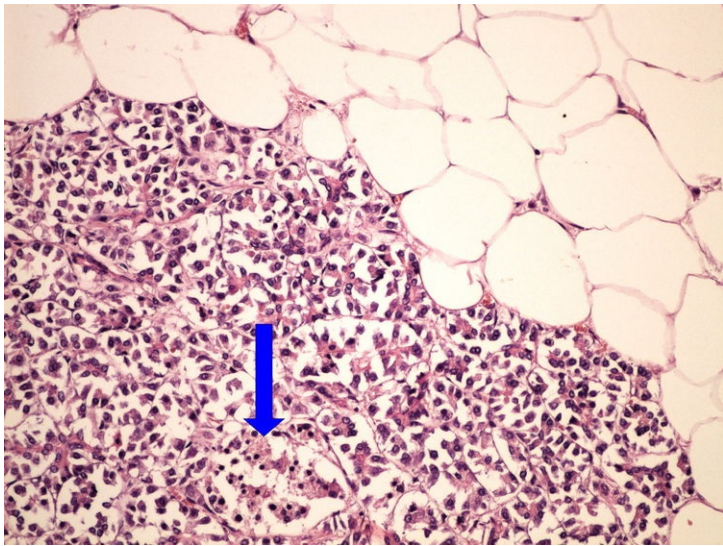
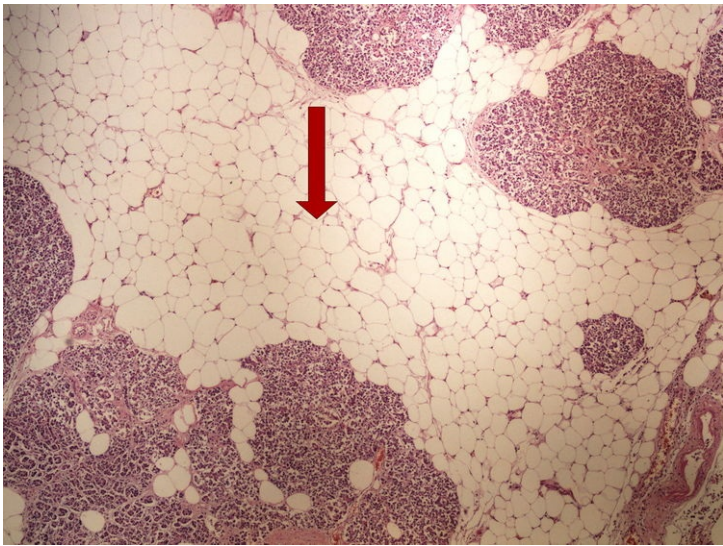
Structures [\[Expand\]](#)

Preparation No. 3 and No. 4 - muscle atrophy



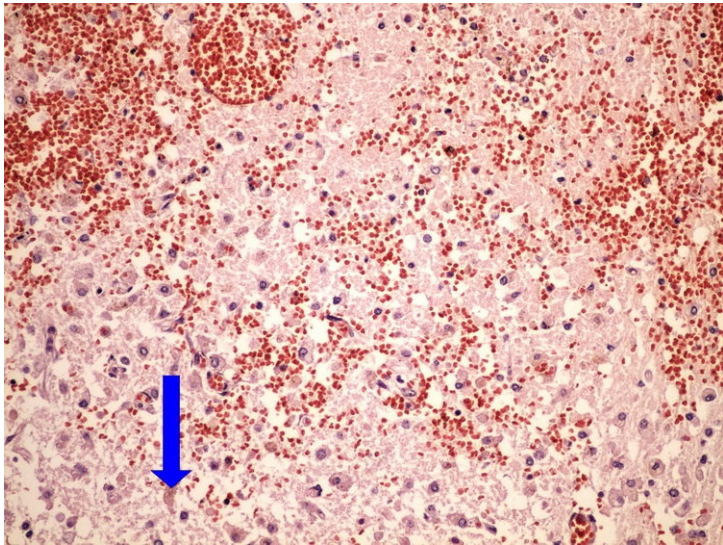
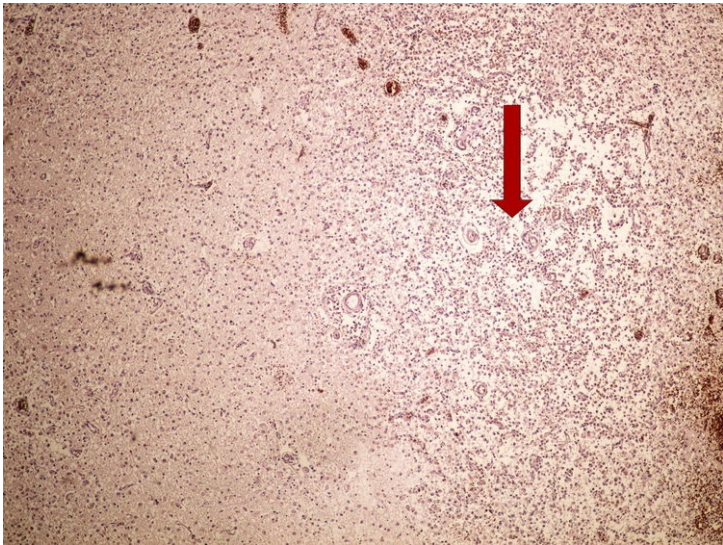
Structures [\[Expand\]](#)

Preparation No. 5 and No. 6 - fatty atrophy of the pancreas



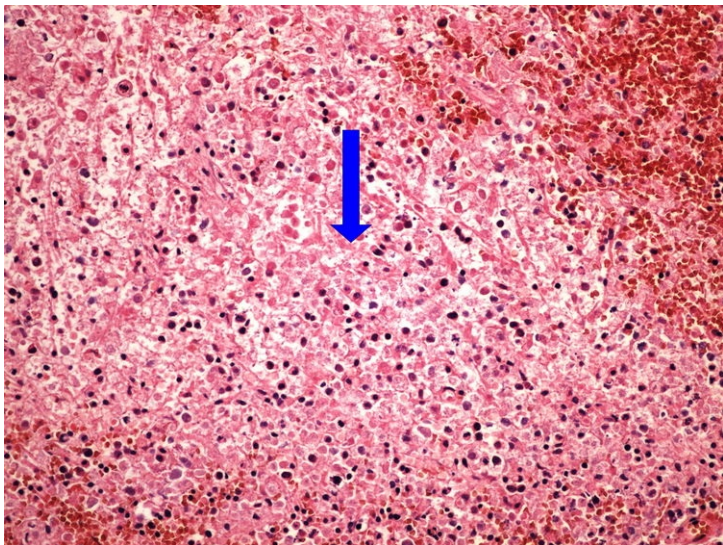
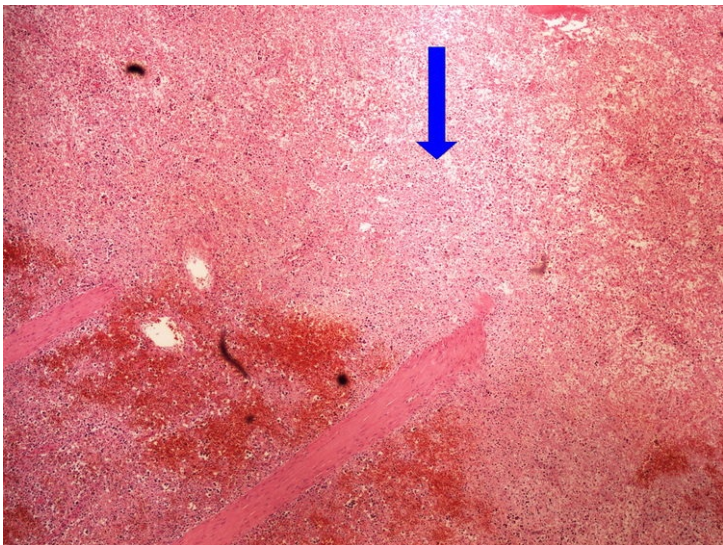
Structures [\[Expand\]](#)

Preparation No. 7 and No. 8 - colliquative necrosis



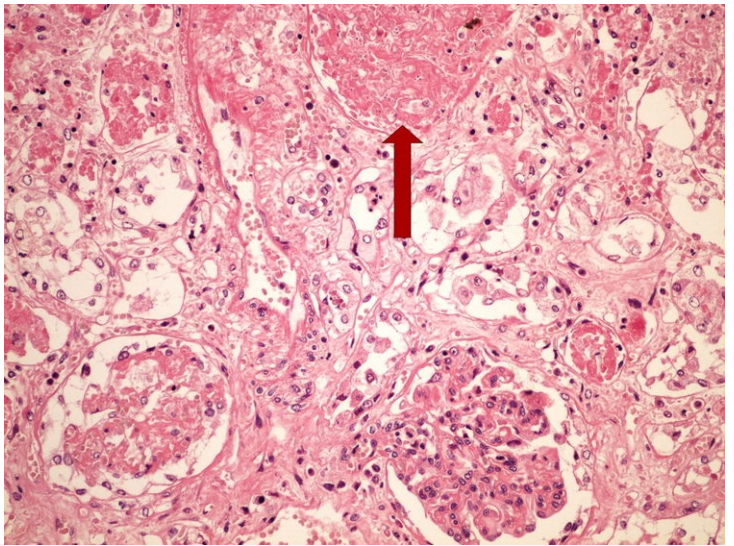
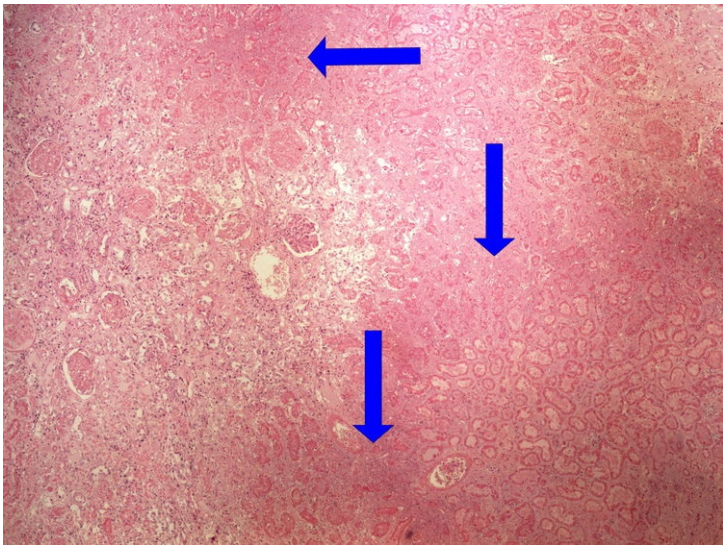
Structures [\[Expand\]](#)

Preparation No. 9 and No. 10 - spleen infarction



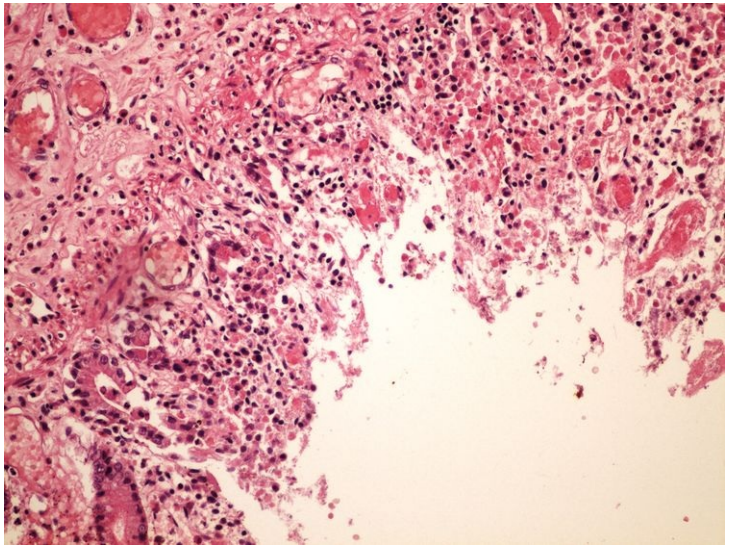
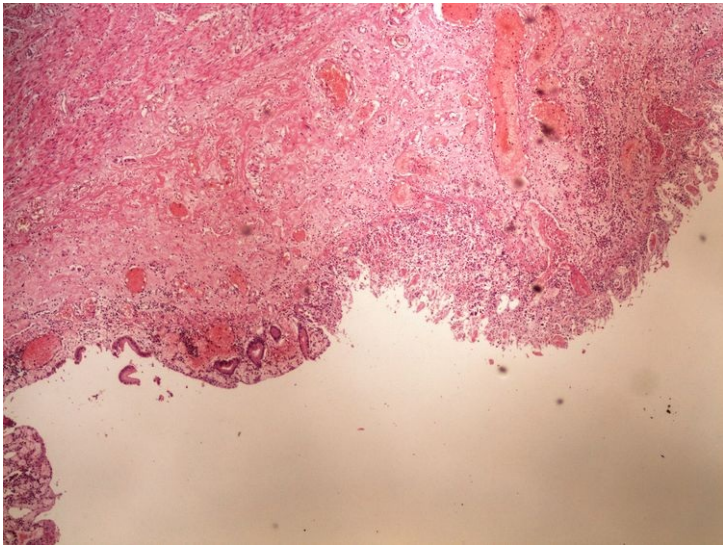
Structures [\[Expand\]](#)

Preparation No. 11 and No. 12 - kidney infarction



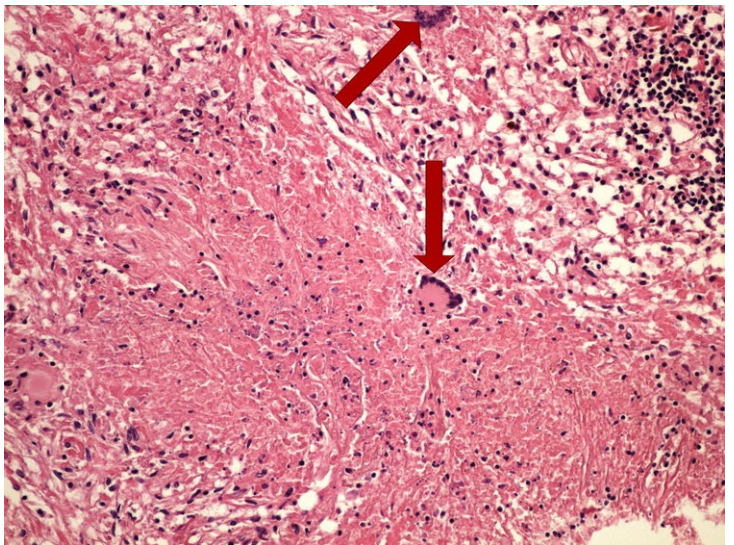
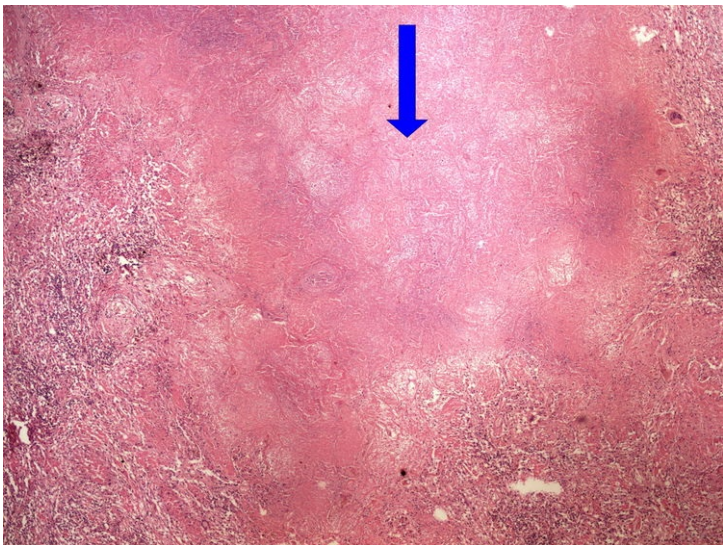
Structures [Expand]

Preparation No. 13 and No. 14 - hemorrhagic intestinal infarction



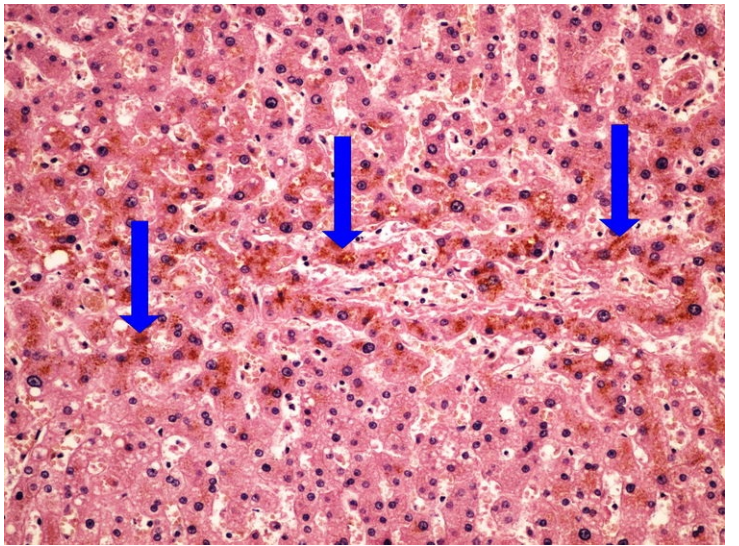
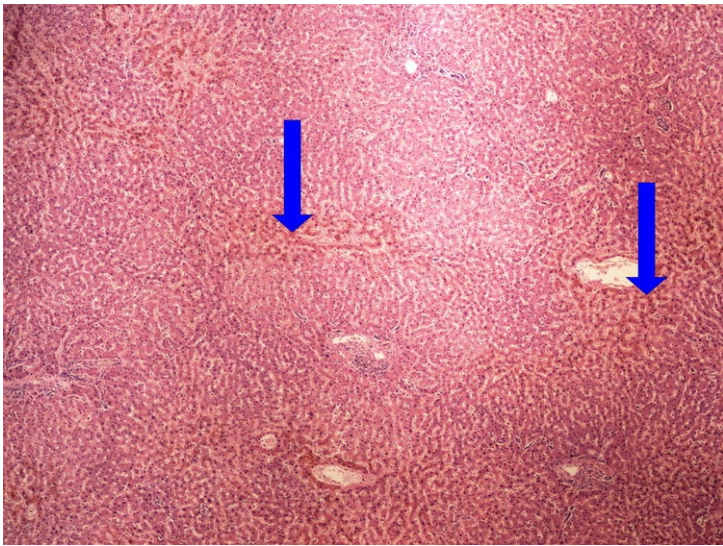
Structures [Expand]

Preparation no. 15 and no. 16 - caseous necrosis of the lungs



Structures [Expand]

Preparation No. 17 and No. 18 - brown atrophy of the liver



Structures

[Expand]

Links

Navigation

← OZPP module - Practicum
No. 1

Module General basics of
pathology and
pathophysiology (3rd Faculty
of Medicine UK)

OZPP module - Practicum No.
3→