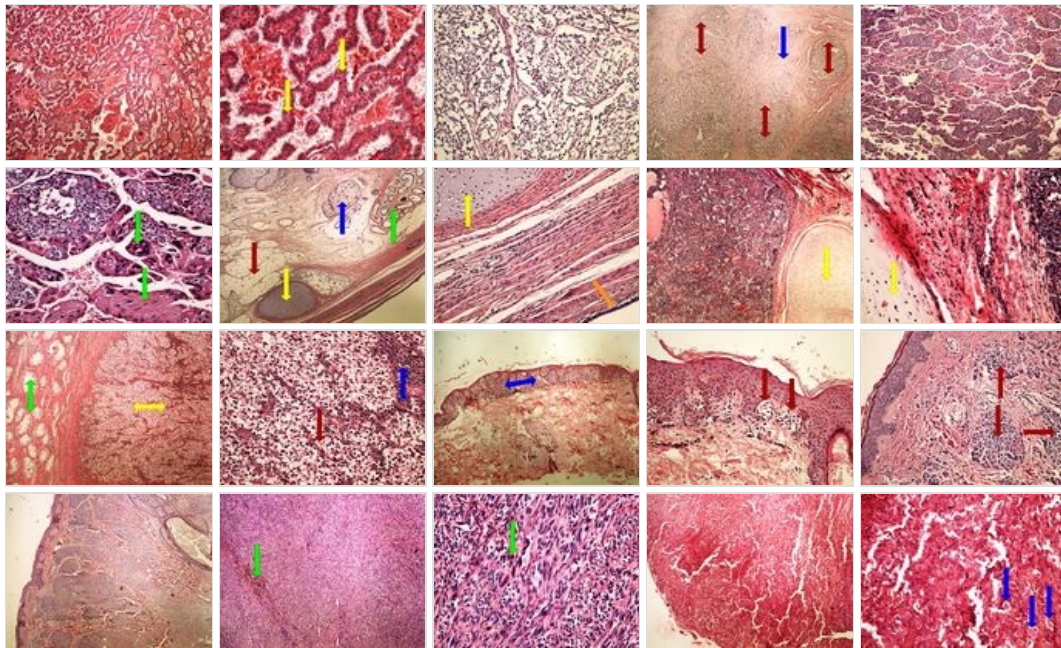
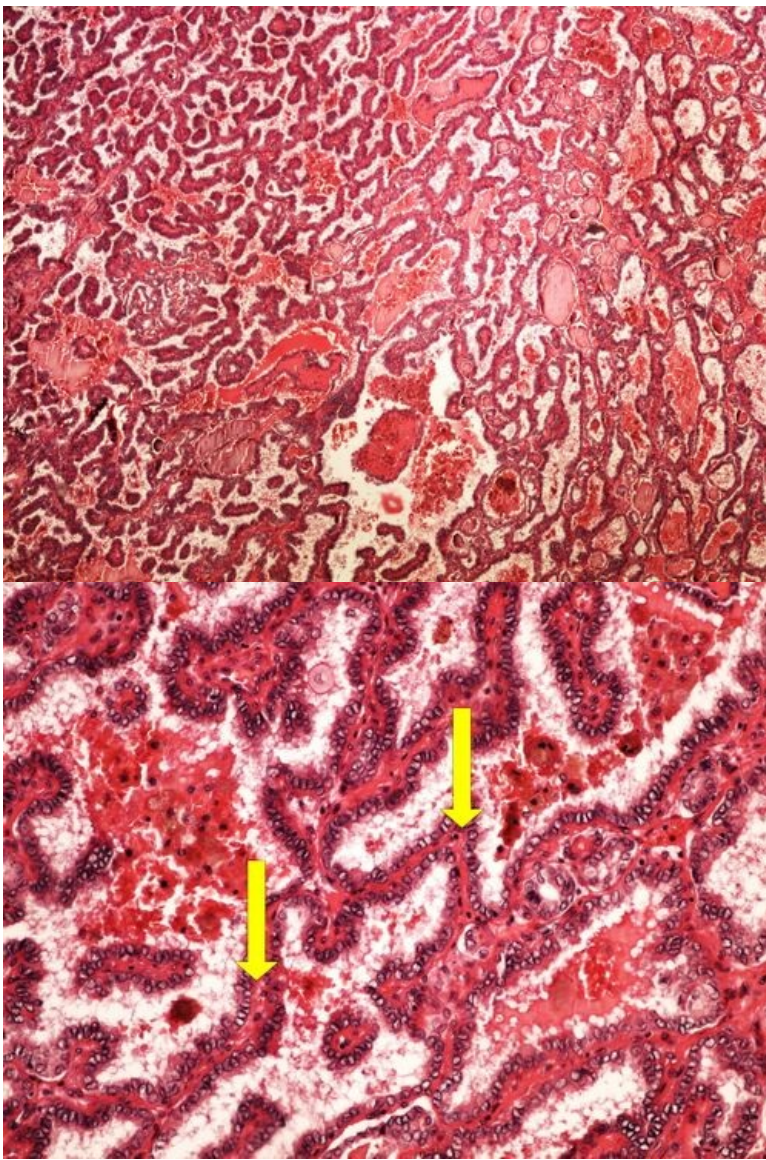


OZPP Module - Practice Number 13

Overview



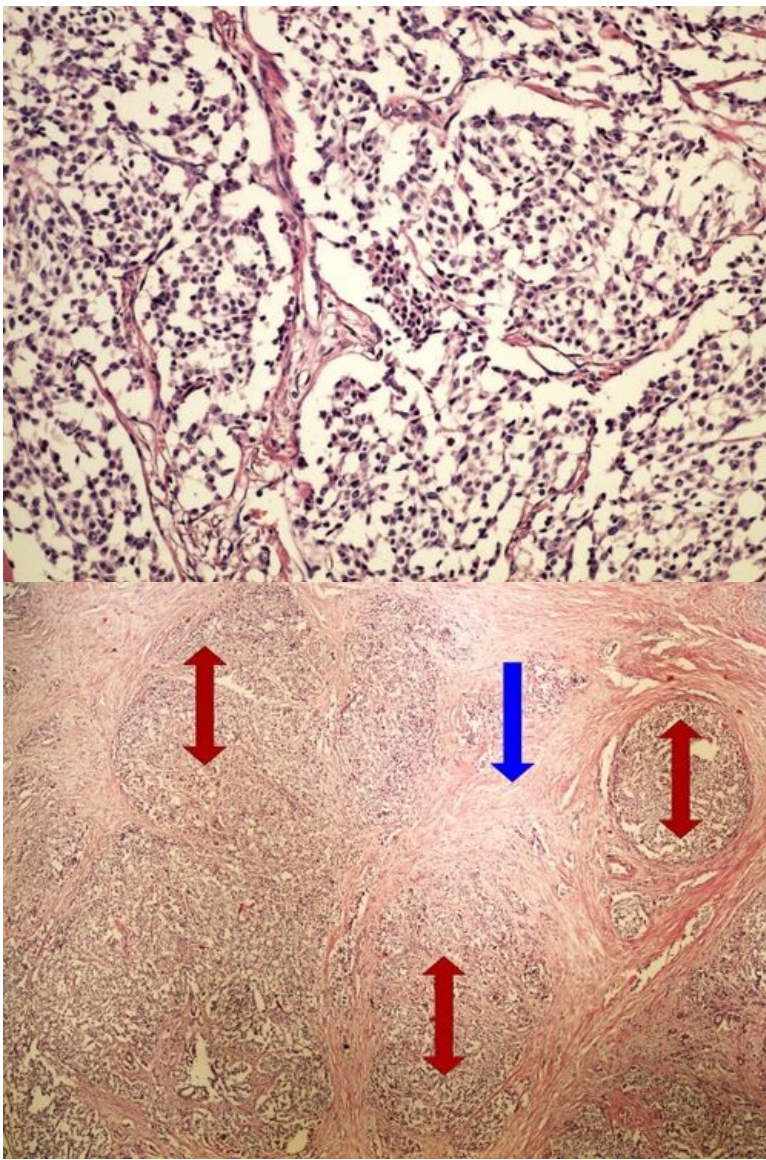
Slide 1 and 2 - papillary thyroid carcinoma



Structures

[\[Expand\]](#)

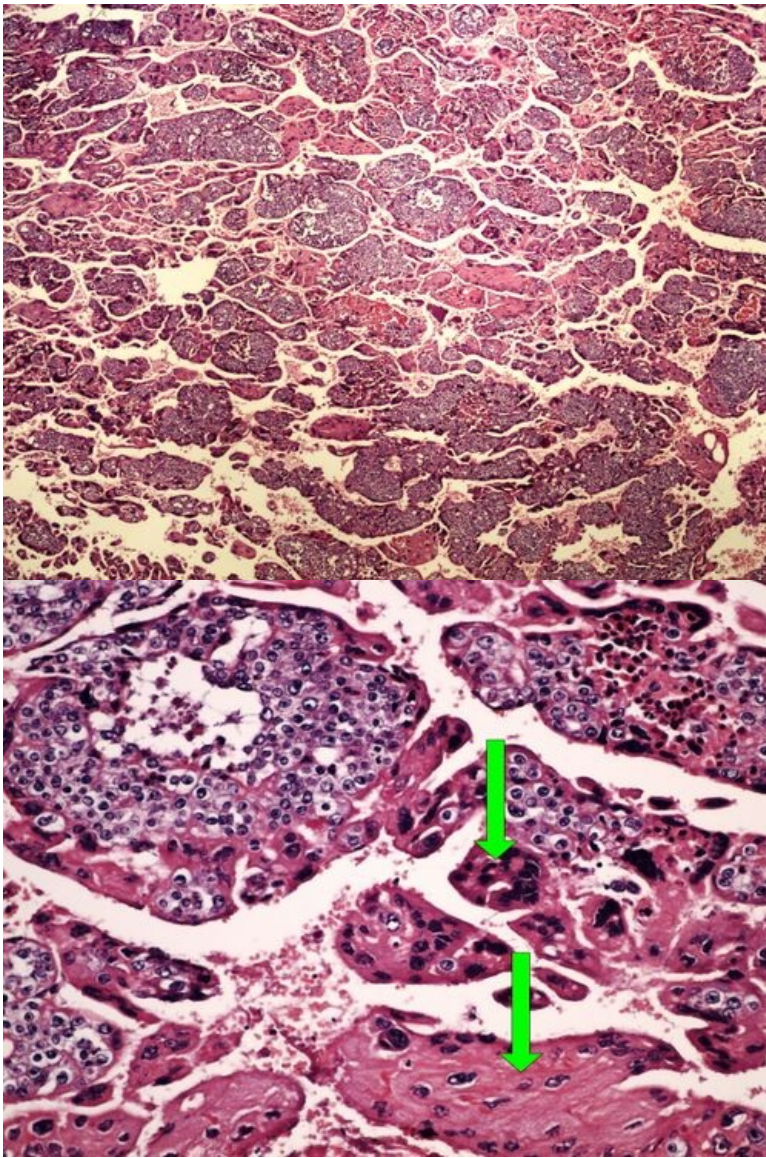
Slide number 3 and 4 - neuroendocrine tumor



Structures

[Expand]

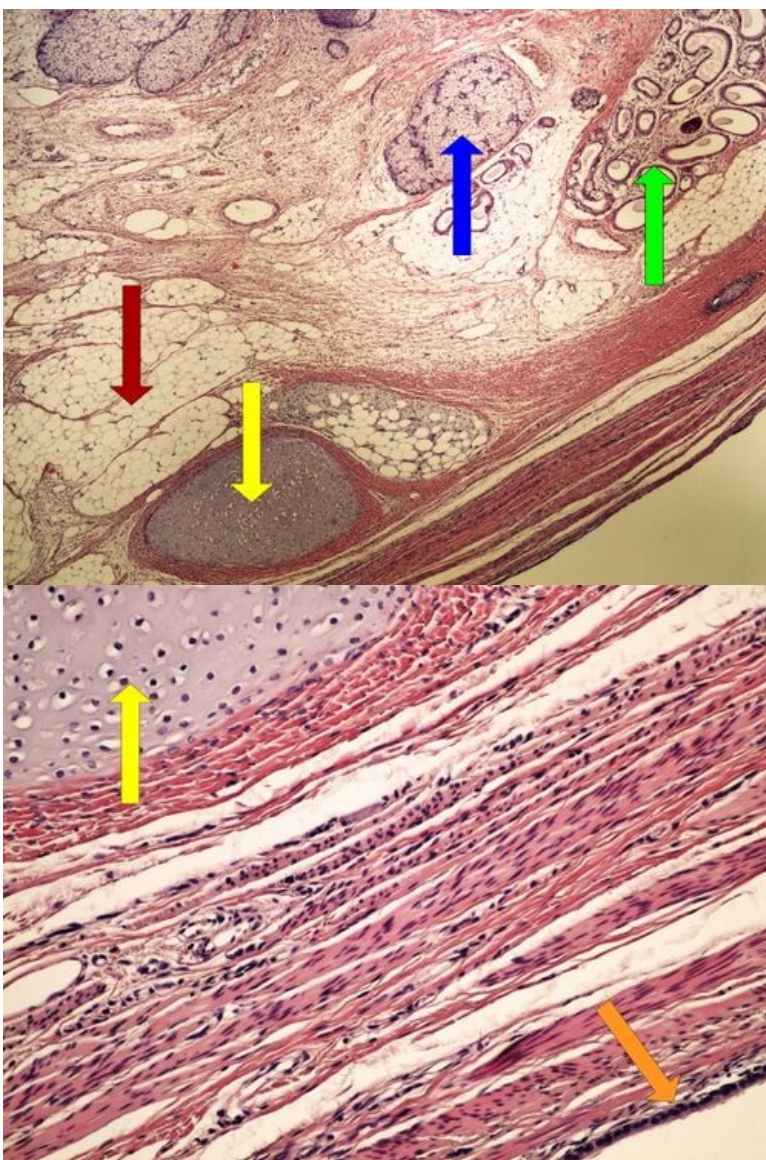
Slide number 5 and 6 - choriocarcinoma



Structures

[Expand]

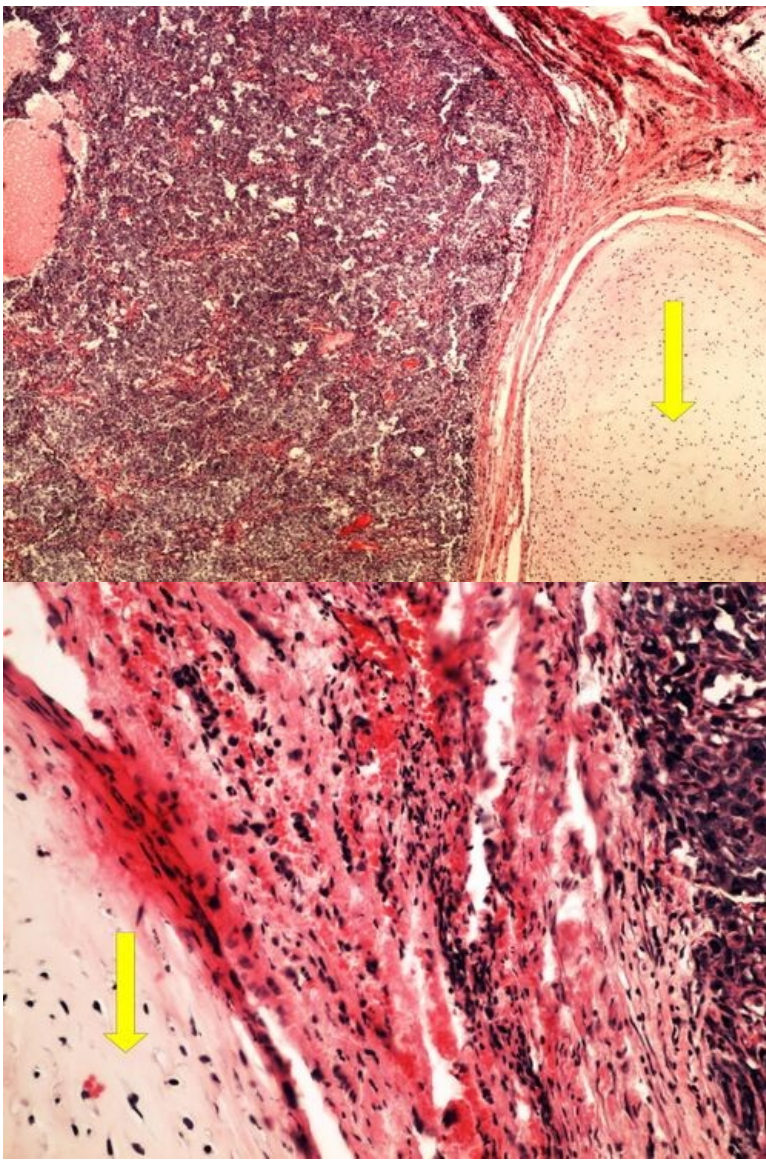
Slide number 7 and 8 - ovary teratoma



Structures

[Expand]

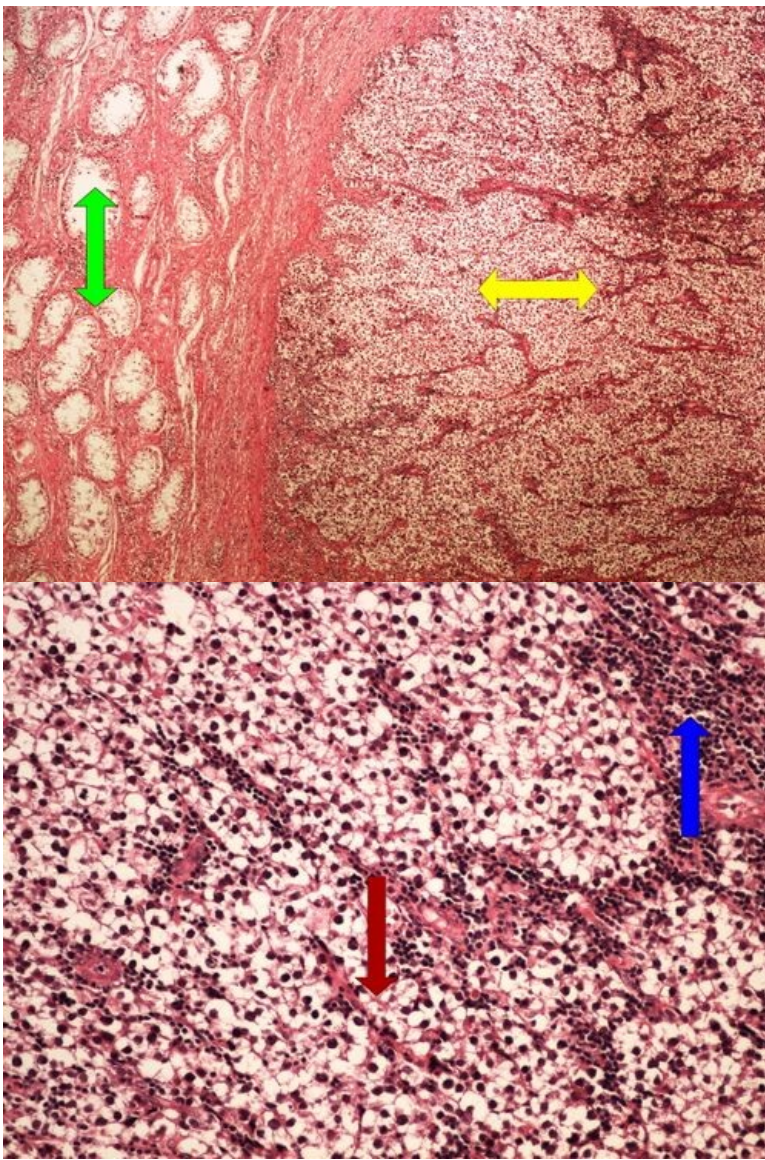
Slide number 9 and 10 - mixed germinal tumor



Structures

[\[Expand\]](#)

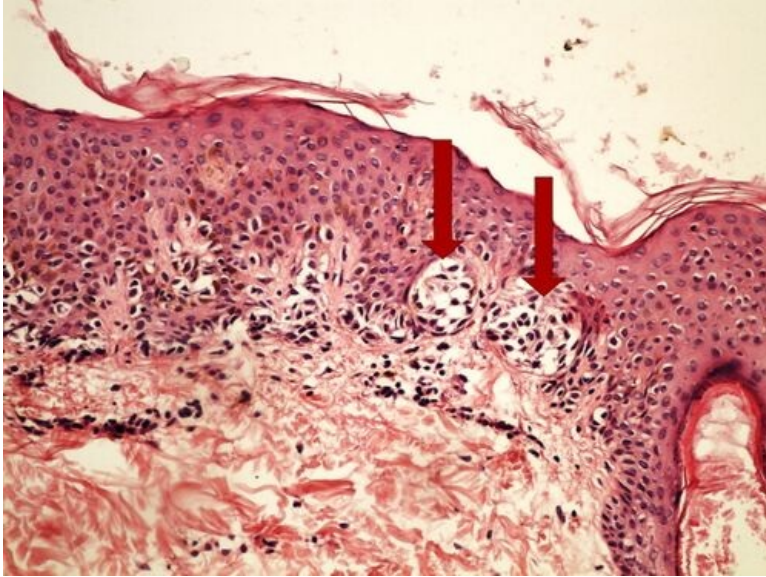
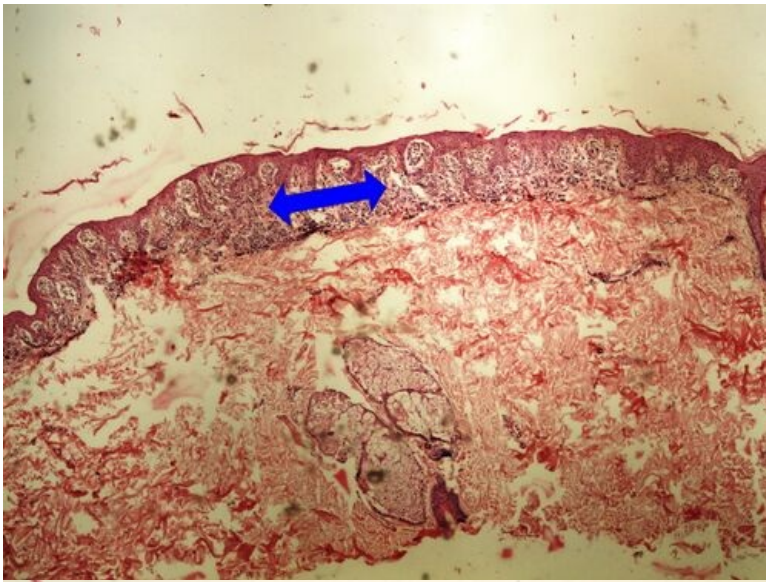
Slide number 11 and 12 - seminoma



Structures

[Expand]

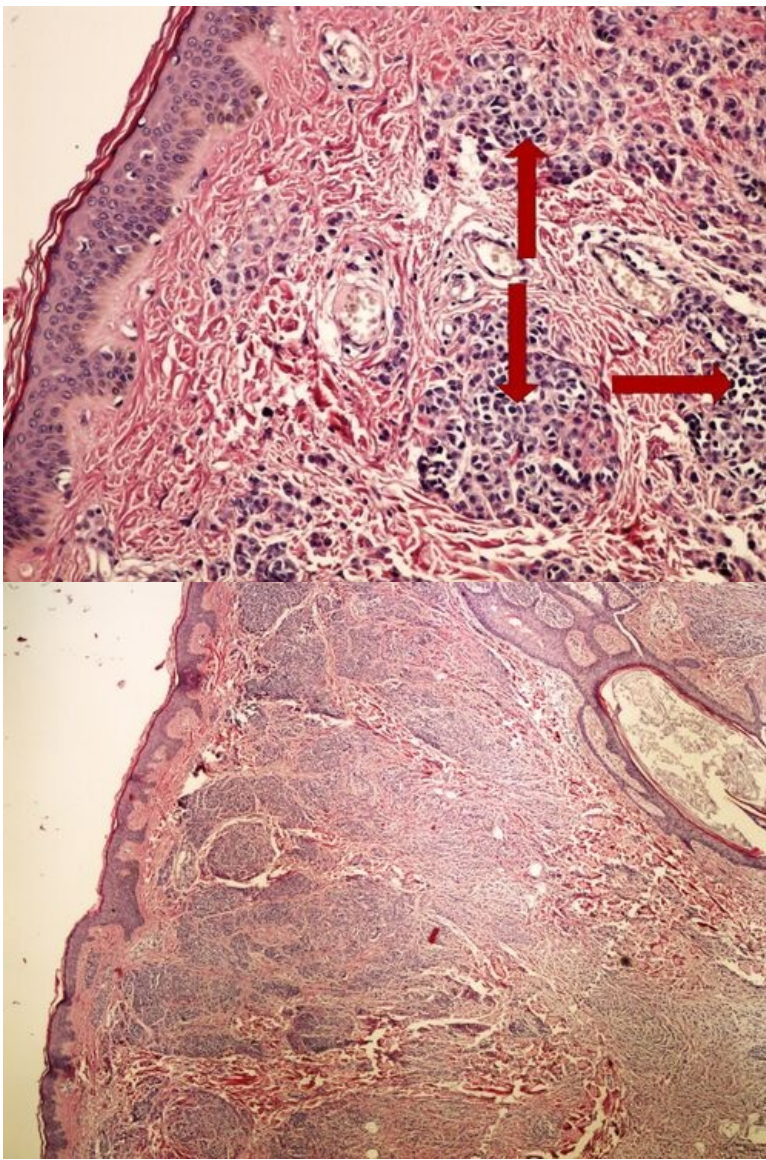
Slide number 13 and 14 - junctional melanocytic nevus



Structures

[Expand]

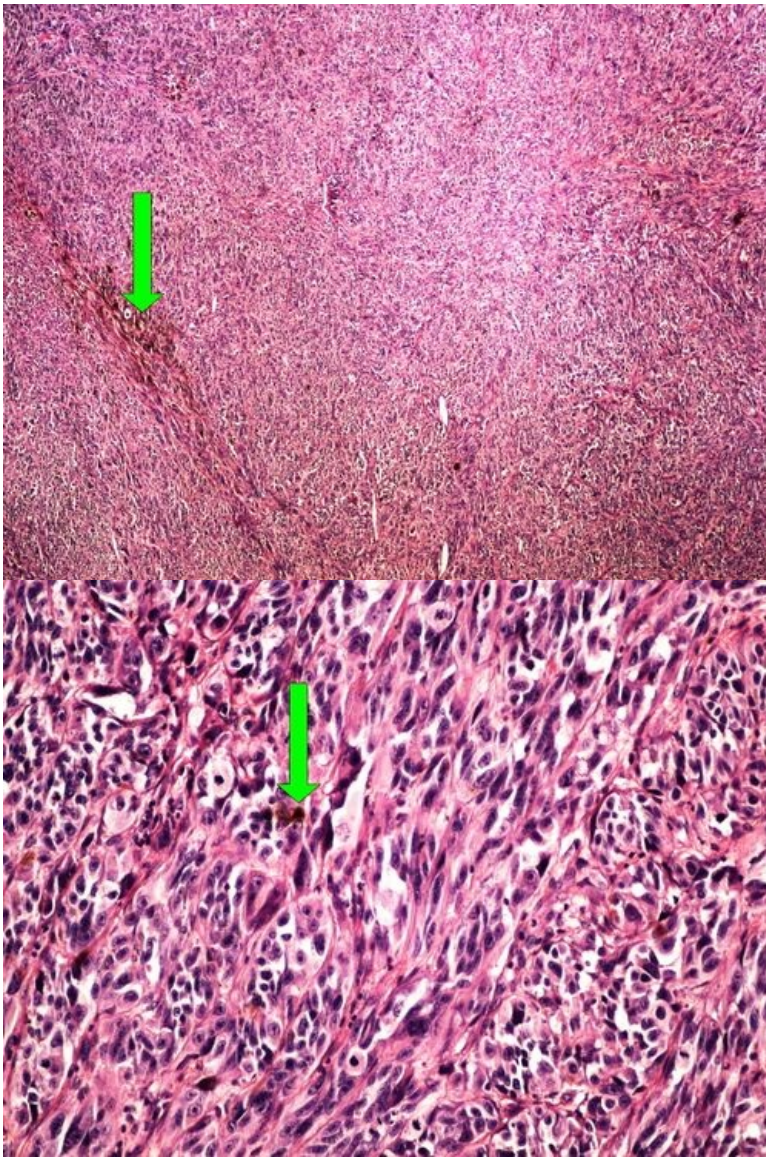
Slide number 15 and 16 - intradermal melanocytic nevus



Structures

[\[Expand\]](#)

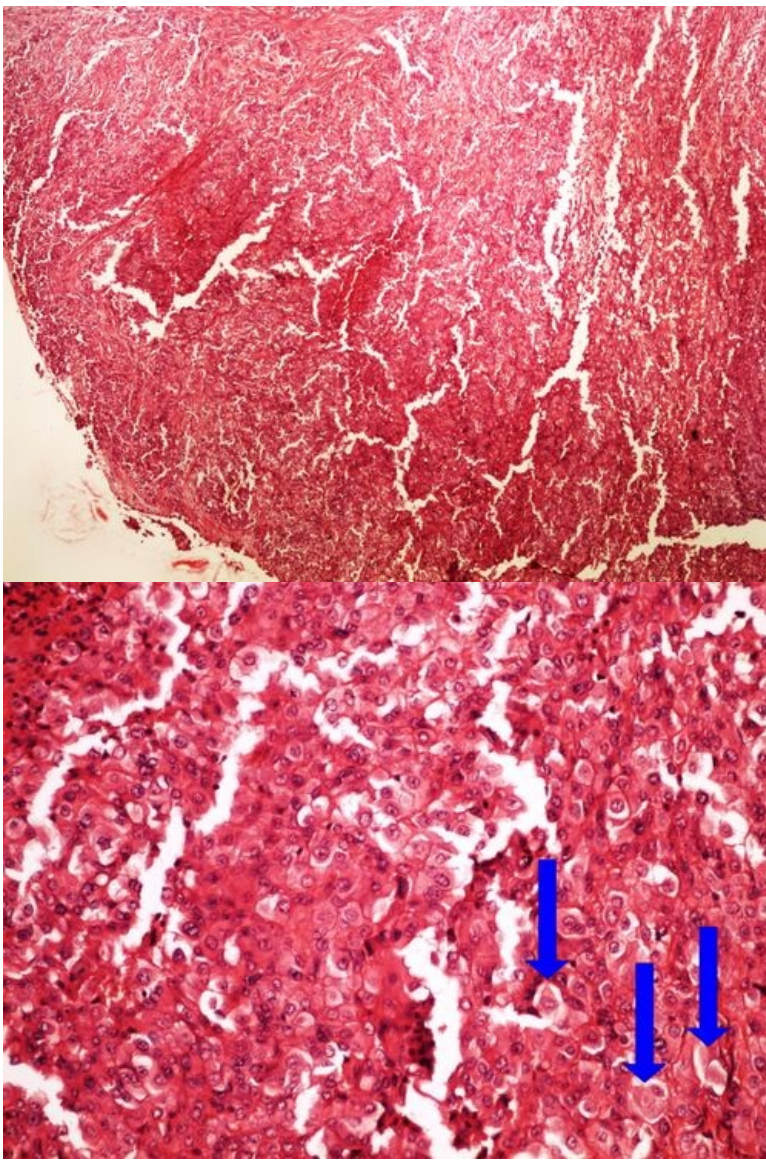
Slide number 17 and 18 - melanoma



Structures

[Expand]

Slide number 19 and 20 - mesothelioma



Structures

[Expand]

Navigation

← Modul OZPP - Practice
number 12

Module General Basics of
Pathology and Pathophysiology
(3rd Faculty of Medicine,
Charles University)

Modul OZPP - Practice number
14 →