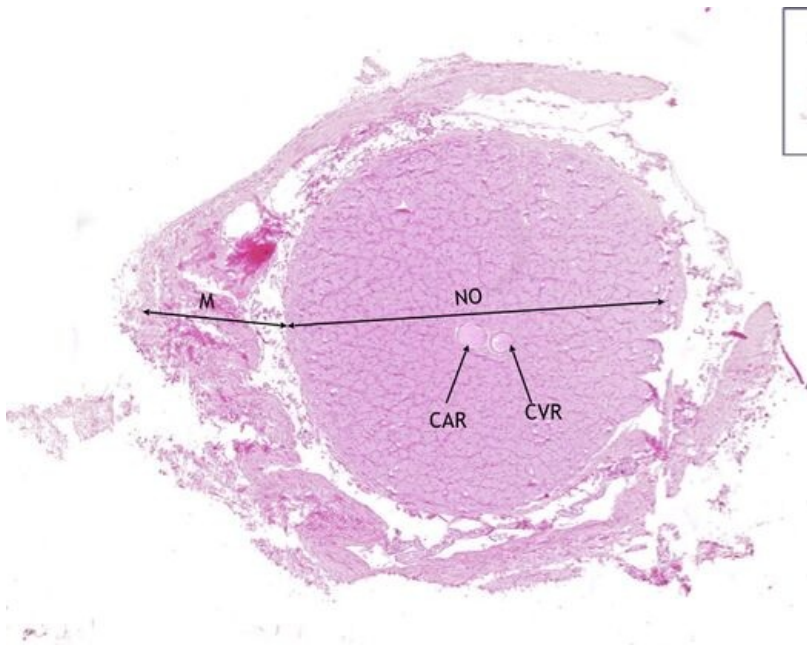


Nervus opticus - HE

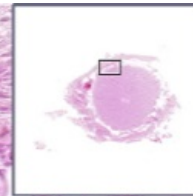
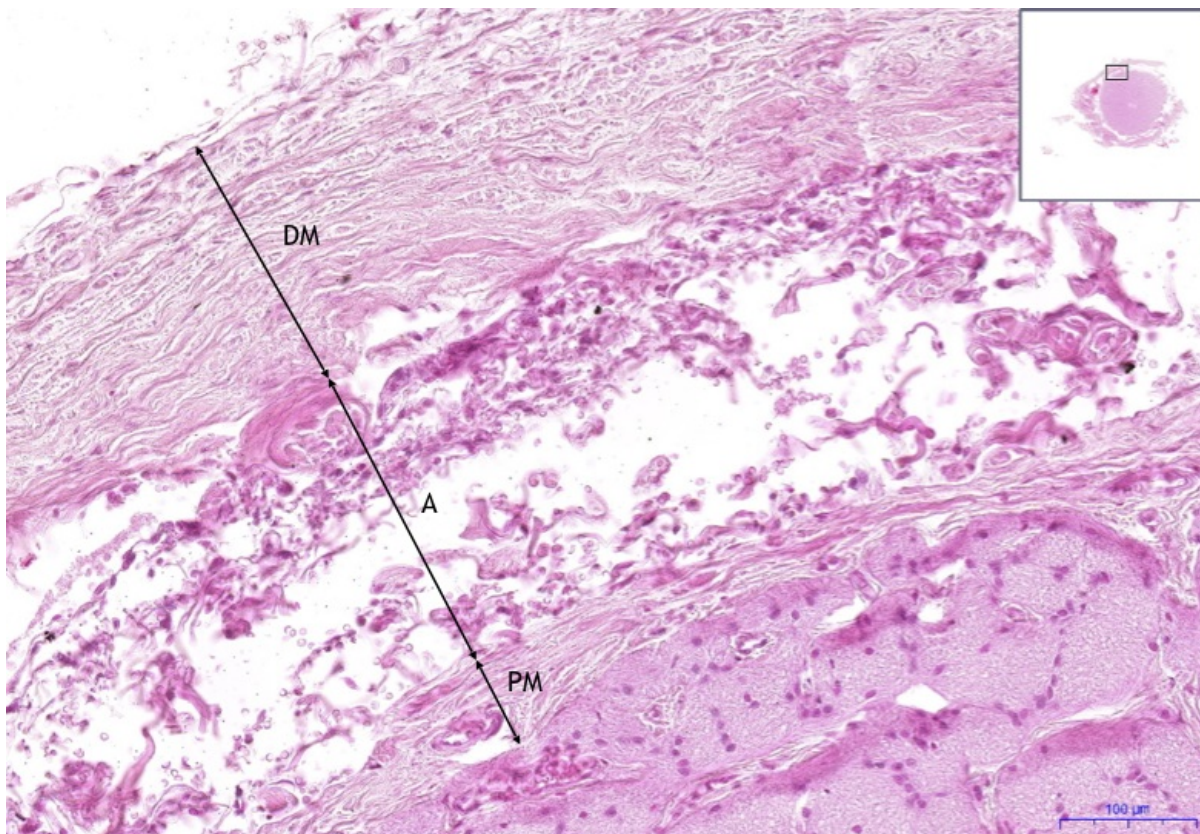
Optic nerve - HE, 1.6x



Optic nerve:

- 1) **NO** - optic nerve
- 2) **M** - meninges/menings
- 3) **CAR** - central retinal artery / central retinal artery
- 4) **CVR** - central retinal vein / central retinal vein

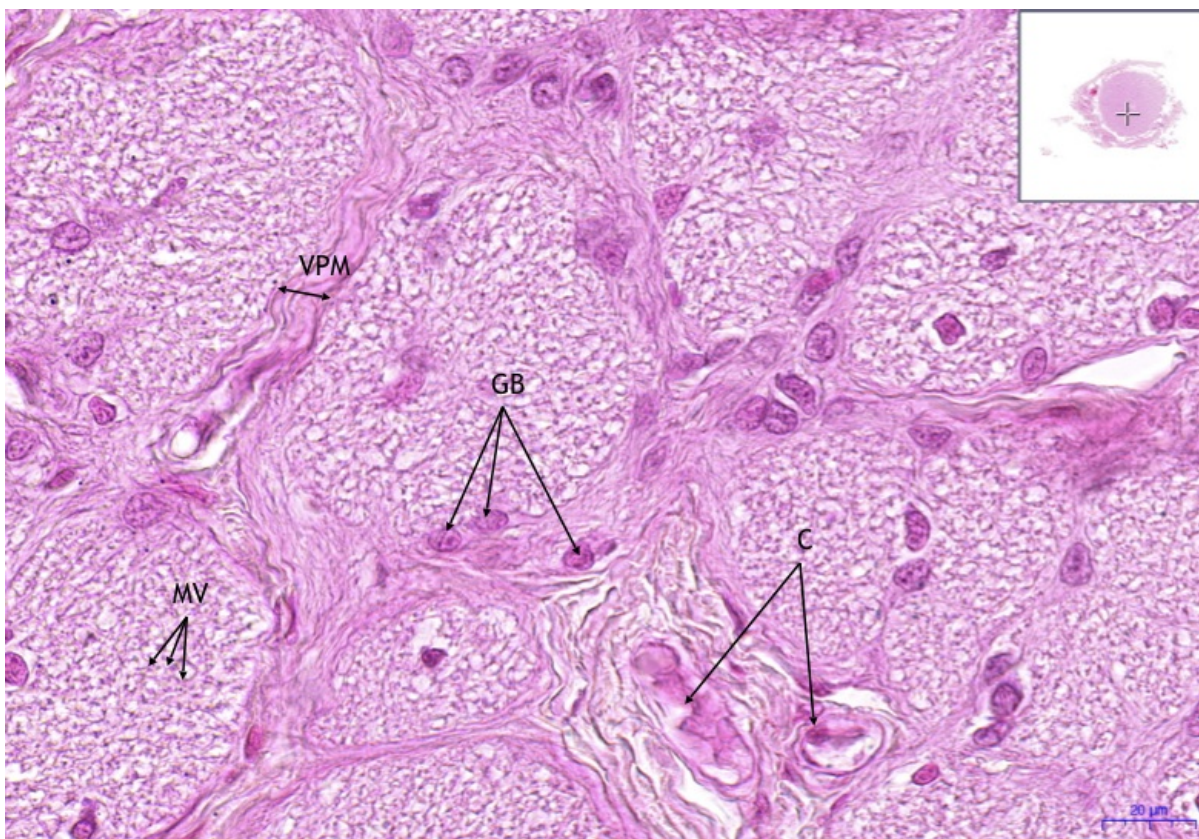
Optic nerve - HE, 11.7x



Optic nerve:

- 1) **PM** - pia mater
- 2) **DM** - dura mater

Optic nerve - HE, 40x



- 1) **VPM** - connective tissue of pia mater
- 2) **MV** - myelinated fibers
- 3) **GB** - glial cells
- 4) **C** - blood vessels

Navigation

Navigation: Sense organs		
← Preparation A3	List of preparations	Preparation A6 →