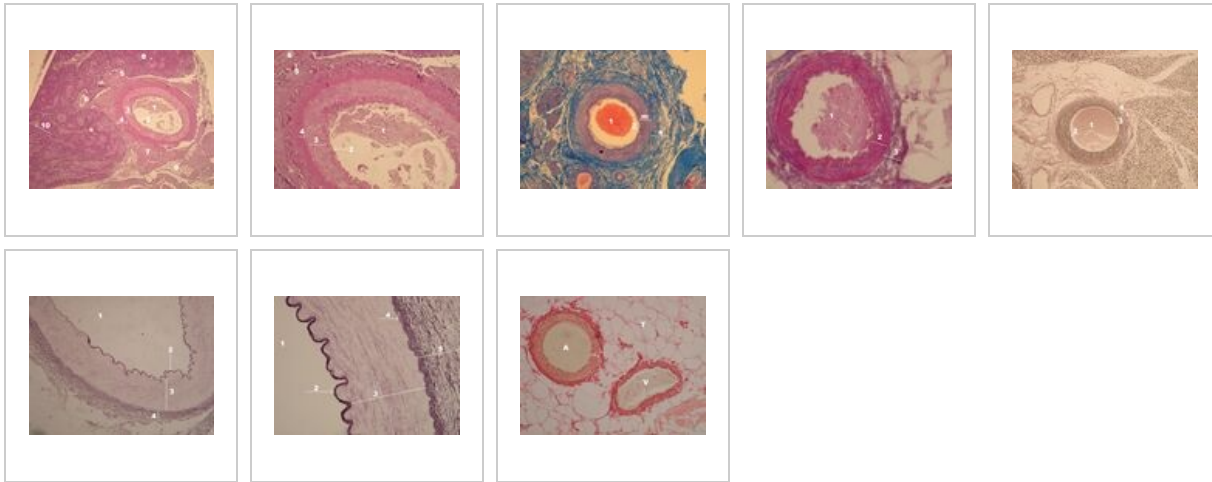
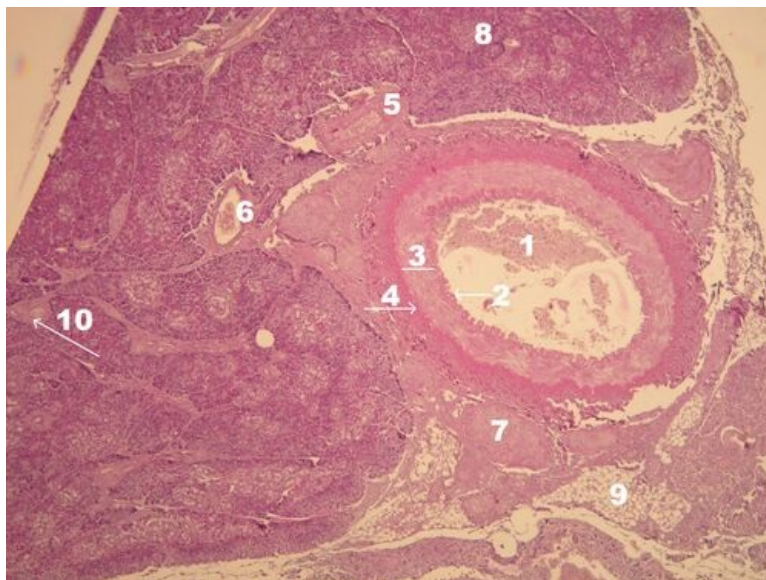


Muscular artery SFLT



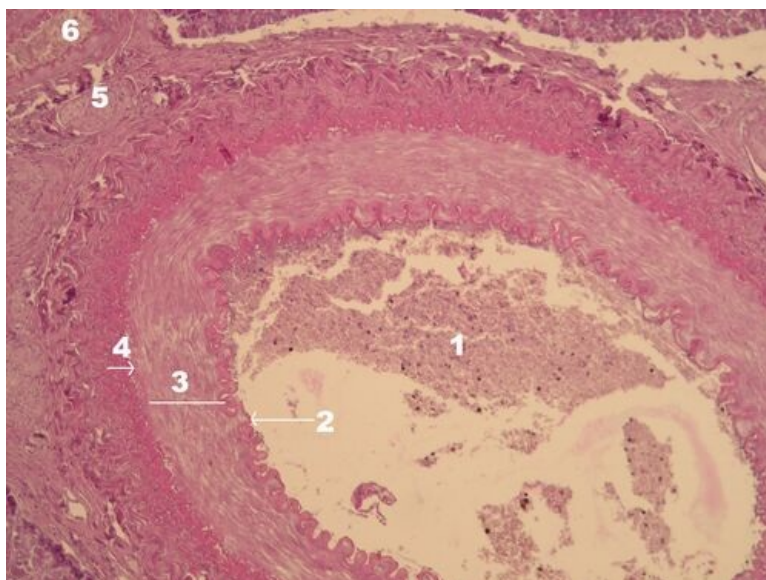
Name: Muscular artery - overview (HE)



Description:

- 1 - artery lumen
- 2 - intima and membrana elastica interna
- 3 - tunica media
- 4 - membrana elastica externa
- 5 - other muscle-type artery,
- 6 - vein,
- 7 - peripheral nerve (autonomic nervous system),
- 8 - pancreatic parenchyma - light circles are the islets of Langerhans (endocrine part of the pancreas), dark circles are serous acini (exocrine part of the pancreas),
- 9 - adipose tissue,
- 10 - muscular artery branches into arteries of smaller caliber, which they run in fibrous septa through the parenchyma

Muscular artery - wall layers (HE staining)



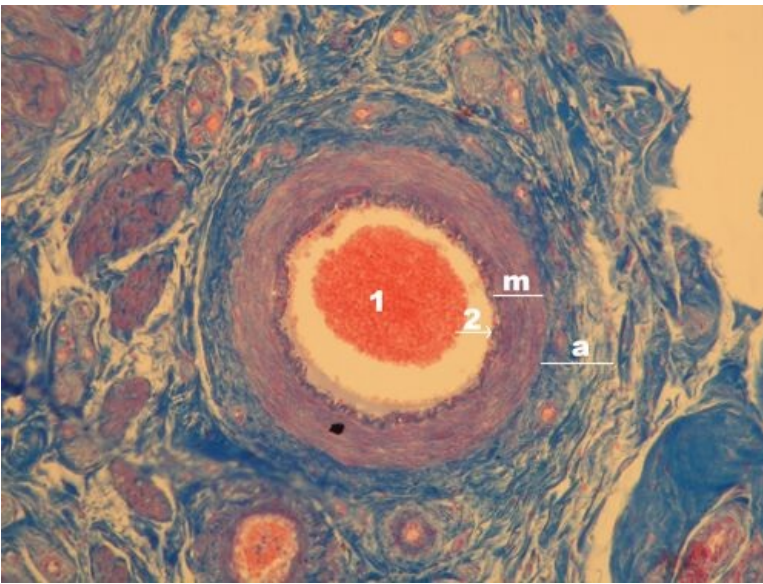
Description:

- 1 - artery lumen,
- 2 - membrana elastica interna,
- 3 - tunica media artery,
- 4 - membrana elastica externa,
- 5 - nerve on cross section,
- 6 - another artery of muscular type and smaller caliber

Muscular artery - overview (AZAN)

Description:

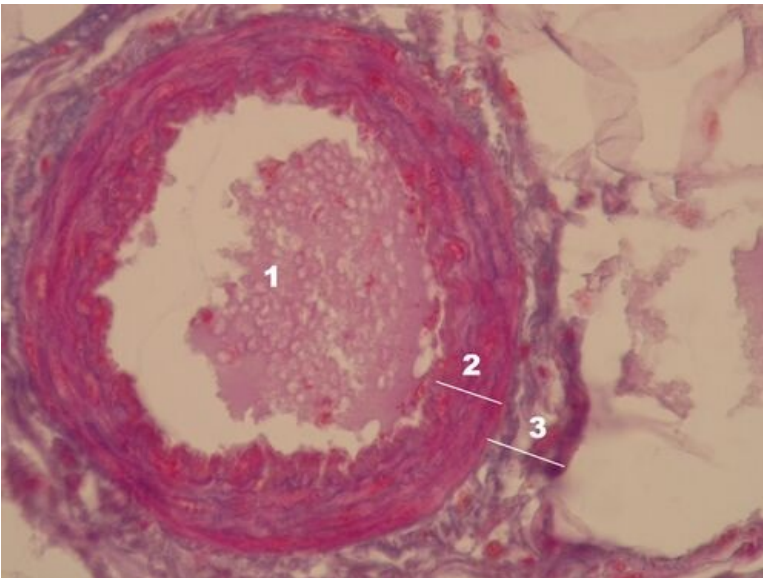
- 1 - arterial lumen,
- 2 - membrana elastica interna,
- m - tunica media,
- a - tunica adventicia



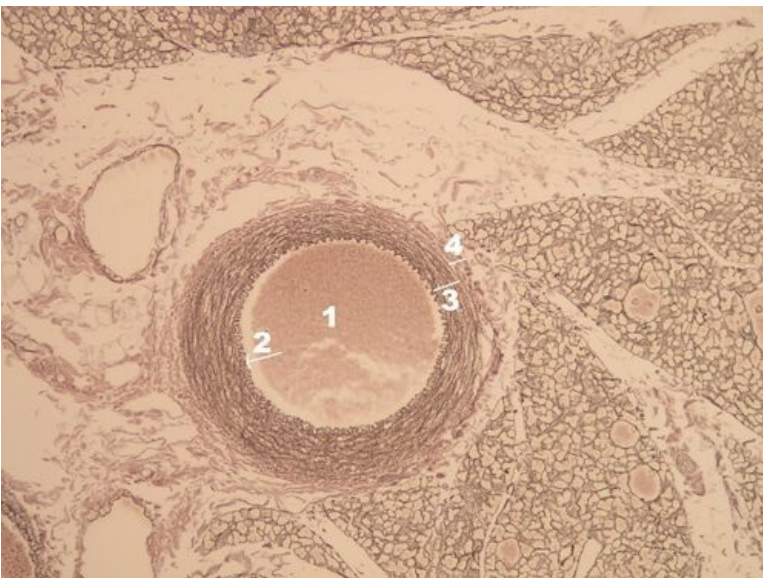
Artery and vein vG

Muscular artery - wall layers (AZAN)**Description:**

- 1 - artery lumen,
- 2 - tunica media,
- 3 - tunica adventicia

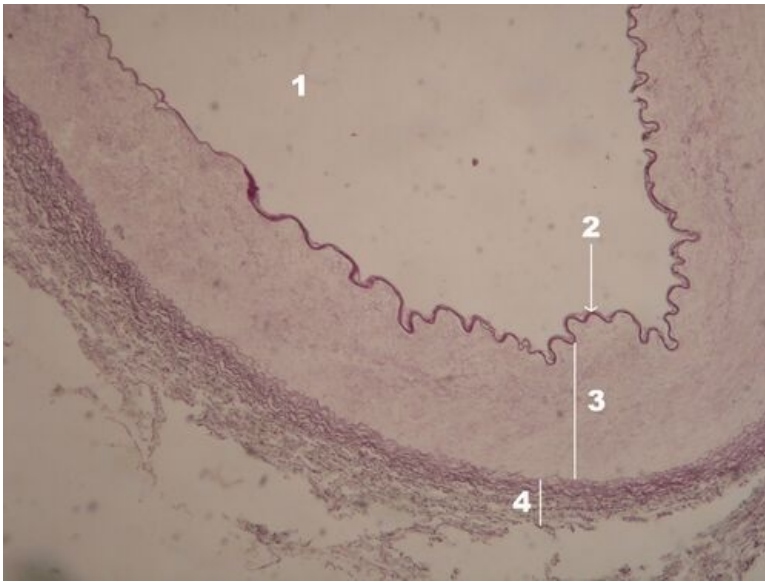
**Muscular artery - overview (silver impregnation)****Description:**

- 1 - artery lumen,
- 2 - membrana elastica interna,
- 3 - tunica media,
- 4 - tunica adventitia

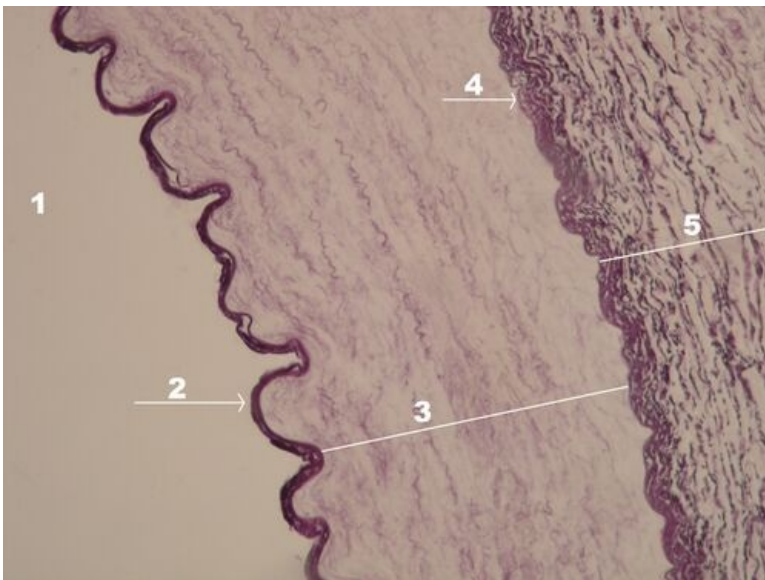
**Muscular artery RF**

Description:

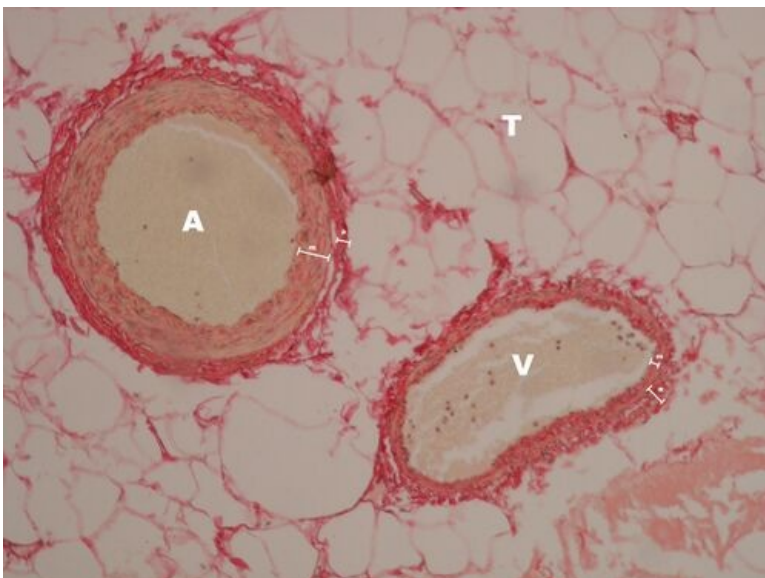
- 1 - artery lumen,
- 2 - membrana elastica interna,
- 3 - tunica media,
- 4 - tunica adventitia

**Muscular artery - wall layers (resorcin-fuchsin staining)****Description:**

- 1 - artery lumen,
- 2 - membrana elastica interna,
- 3 - tunica media,
- 4 - membrana elastica externa,
- 5 - tunica adventitia

**Artery and vein - comparison of vessels of the same caliber (Weigert van Gieson staining)****Description:**

- A - artery, V - vein,
- m - tunica media, a - tunica adventitia,
- tunica adventitia tissue of both vessels passes into the surrounding tissue,
- rich in fat cells (T)



Note: the Weigert van Gieson method distinguishes the ligament in the tunica adventitia (red) from the tunica media (yellow)

Vascular system

- Elastic artery (SFLT)
- Muscular artery (SFLT)
- Vein (SFLT)
- Myocardium (SFLT)

Links

- Histological atlas (3. LF UK)

Study materials for the slides

- Vessels