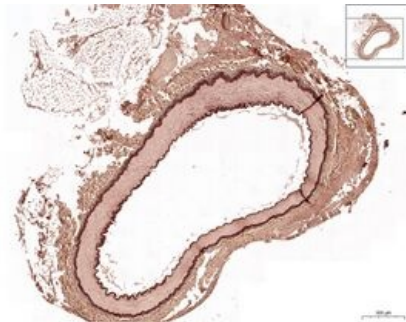


Muscular artery (a. renalis) - WRF

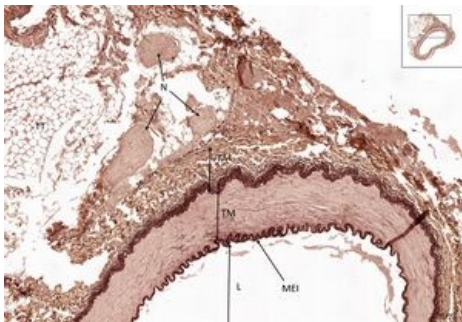
Muscular artery RF 2,7x



Muscular artery RF

- 1) MEI - membrana elastica interna
- 2. TM - tunica media
- 3.) MEE- membrana elastica externa
- 4. TA - tunica adventicia
- 5. TT - adipose tissue
- 6. L - lumen
- 7. N - nerves

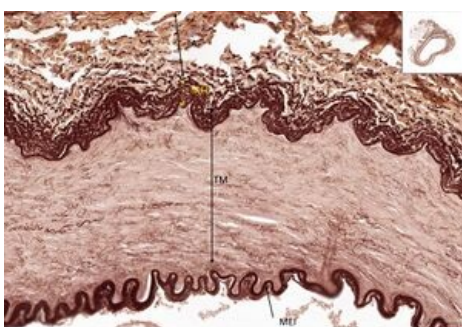
Muscular artery RF 5x



Muscular artery RF

- 1) MEI - membrana elastica interna
- 2. TM - tunica media
- 4. TA - tunica adventicia
- 5. TT - adipose tissue
- 6. L - lumen
- 7. N - nerves

Muscular artery RF 15,5x



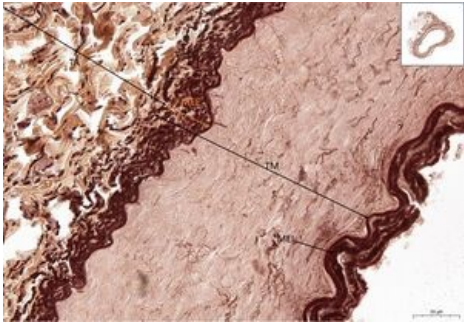
Muscular artery RF

- 1) MEI - membrana elastica interna
- 2. TM - tunica media
- 3.) MEE- membrana elastica externa
- 4. TA - tunica adventicia

Muscular artery RF 28,9x

Muscular artery RF

- 1) MEI - membrana elastica interna
- 2. TM - tunica media
- 3.) MEE- membrana elastica externa
- 4. TA - tunica adventicia
-
-



Navigation

Navigation: Circulatory system

← Slide C3 | List of slides | Slide C5 →