

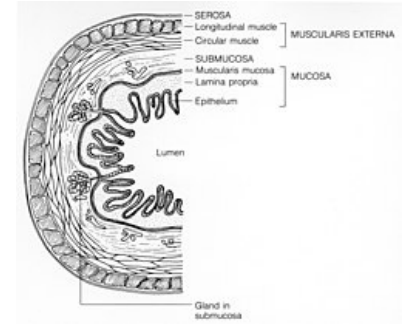
Mucosal



Mucous membrane lines the internal surfaces of our body. It can **consist of up to three** basic layers (laminae): *lamina epithelialis* (surface layer of the epithelium), *lamina propria mucosae* (ligament) and *lamina muscularis mucosae* (muscle).

The lamina muscularis mucosae **may not always be present** and may sometimes be discontinuous.

The specific structure of the mucous membrane differs in the individual organ systems of our body. Mucous membranes represent a possible point of entry of infection into the organism, therefore they must be very well defended - the mucosal immune system serves this purpose, which includes the lymphatic tissue. The mucosa also contains a greater number of glands.



Mucosa

Links

Related Articles

- Mucosa of the upper respiratory tract
- Upper Respiratory Tract Mucous

Source

- VAJNER, Ludek – CARBON, George – KONRÁDOVÁ, Václava. *Medical histology. 1, Cytology and general histology*. 1. edition. Karolinum, 2010. 110 pp. ISBN 978-80-246-1860-9.
- KONRÁDOVÁ, Václava – VAJNER, Ludek. *Histologie : lectures for bachelor studies*. 1. edition. H & H, 2005. ISBN 80-7319-009-5.