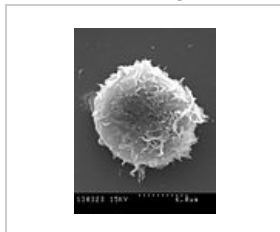


Monocyte

A **monocyte** belongs to the agranulocytic white blood cells (leukocytes). It is the largest white blood cell, which after traveling from the bloodstream into the tissues or body cavities turns into a macrophage. In a healthy adult, monocytes make up 3-8% of the total number of leukocytes.

Monocyt



Monocyte in an
electrone microscope

Links

Related articles

- Monocytosis
- Monocytopenia

External Links

- Monocyt (Czech Wikipedia)
- Monocyte (English Wikipedia)

Source

- ŠVÍGLEROVÁ, Jitka. *Monocyty* [online]. The last revision 18. 2. 2009, [cit. 10.11.2010]. <<https://web.archive.org/web/20160416203205/http://wiki.lfp-studium.cz/index.php/Monocyty>>.