

Metaphysis



The metaphysis is the part of a long Bone at the junction of its peripheral part of the Epiphysis and the Diaphysis. During childhood, there is Cartilage in this area (the so-called growth cartilage or growth gap), thanks to which bone growth occurs.

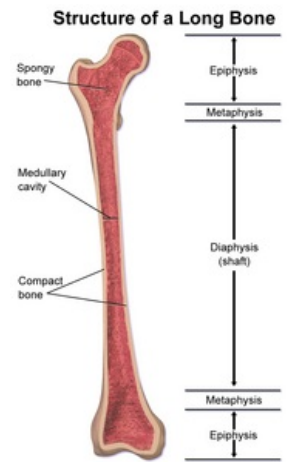
Links

related articles

- Epiphysis (part of bone)
- Diaphysis

Source

- SOSNA, A. – VAVŘÍK, P. – KRBEC, M., et al. *Základy ortopedie*. 1. edition. Praha : Triton, 2001. ISBN 80-7254-202-8.



The structure of a long bone