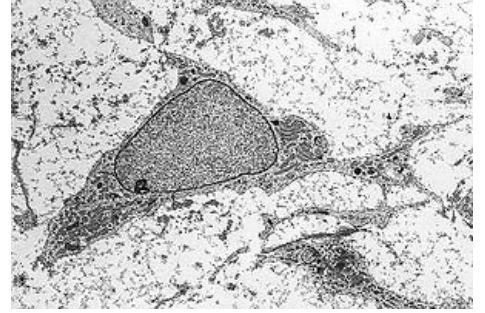


Mesenchyme

It is a thin fibrous tissue of human embryo, which is made up of fibroblast-like cells and intercellular mass. Mesenchyme originated primarily from the mesoderm. During development, it gives rise to other connective tissues, vascular system, smooth muscle and hematopoietic tissue. Malignant tumors emerging from this tissue are referred to as **sarcomas**.



Mesenchymal Stem Cell - rotate