

Meniscus

A sickle-shaped formation of fibrocartilage, which partially extends into the joint space, is referred to as **the meniscus**. The circuit is firmly fused with the joint housing. The thin inner edge of the meniscus adjoins the articular surfaces, relative to which it is partially movable. The function is similar to that of articular discs, i.e. equalizing uneven joint surfaces and increasing joint mobility. The menisci are often damaged by incorrect and strenuous movements of the knee joint, they can be detached from the capsule and slip from their original position, and become pinched or torn.

Menisci in the knee joint

There are two menisci in the knee joint:

- **medial meniscus**
- **lateral meniscus**.

The menisci are connected to each other by *the ligamentum transversum genus*.

Meniscus medialis

The medial meniscus is located between the medial condyle of the femur and the medial part of the articular surface of the tibia. It is slightly larger and less mobile than the lateral. Its movements can be influenced by the semimembranosus muscle, which is attached to the outer part of the joint capsule in the same place as the meniscus.

Meniscus lateralis

The lateral meniscus is located between the lateral condyle of the femur and the lateral part of the articular surface of the tibia. It is slightly smaller and more mobile than the medial meniscus. Its movement is influenced by the popliteus muscle. Its dorsal lobe is connected by a bifurcated ligament (*ligamentum meniscomemorale anterius et posterius*) to the fossa intercondylaris femoris.

Links

Related Articles

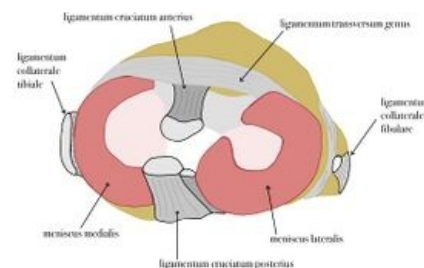
- Biomechanics of the knee joint
- Cartilage

External links

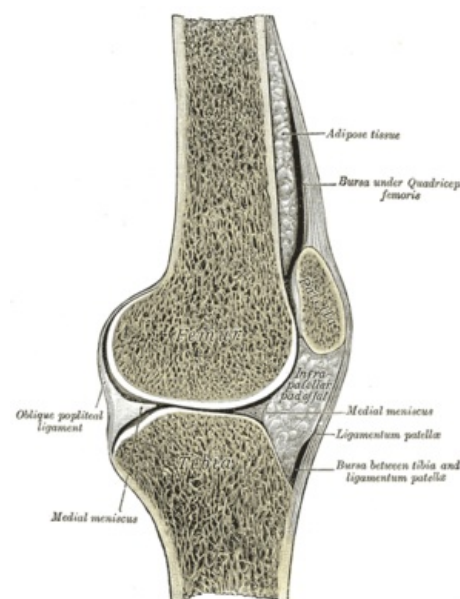
- Treatment of meniscal rupture - article in English (<http://www.drnickcampos.com/health-newsletter/Meniscus.htm>)

References

- ČIHÁK, Radomír. *Anatomie 1*. 2. edition. Grada Publishing, a.s., 2008. 516 pp. vol. 1. ISBN 80-7169-970-5.



Drawing of the knee joint - menisci and ligaments



Sagittal section of the knee joint