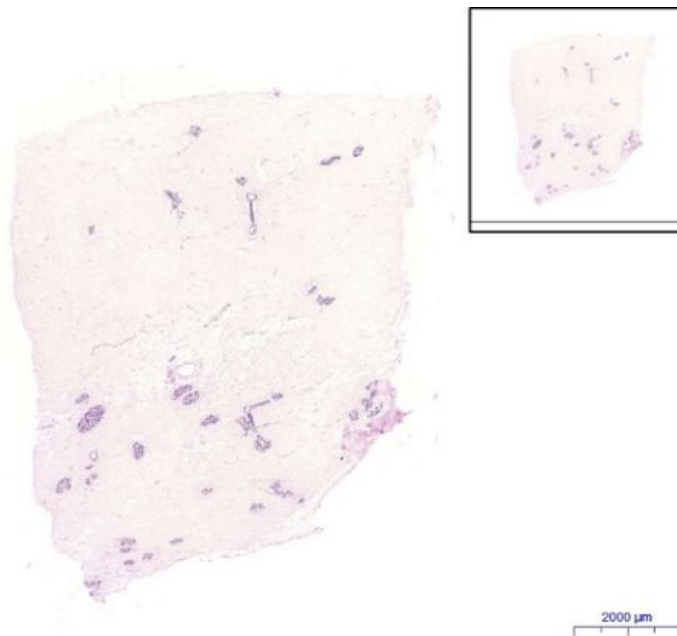


# Mamma non lactans - HE

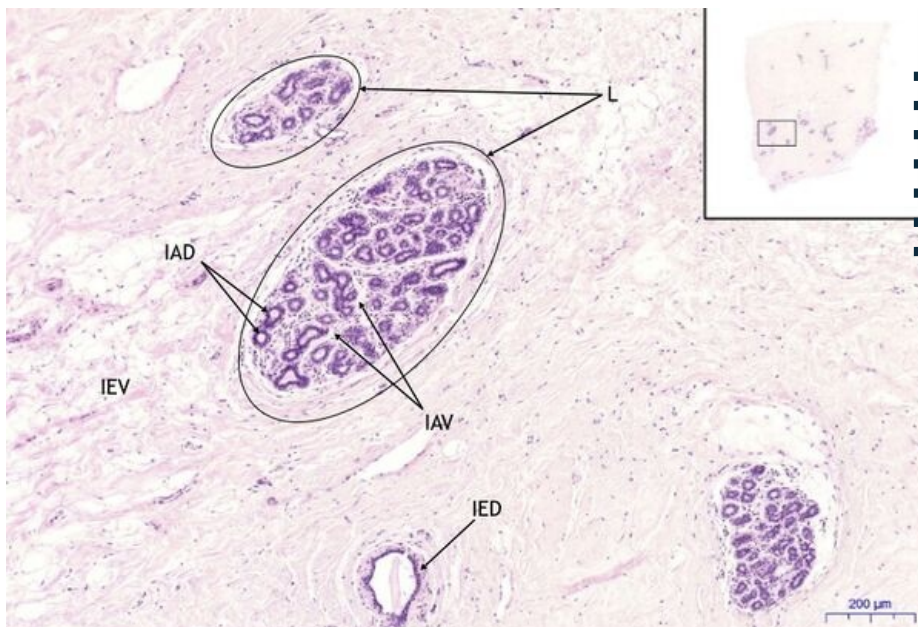
## Mamma non lactans - HE 0.6x



### Mamma non lactans:

- 1) **L** - lobule
- 2) **IAD** - intralobular duct
- 3) **IAV** - intralobular ligament / intralobular stroma
- 4) **IED** - interlobular duct
- 5) **IEV** - interlobular ligament / interlobular stroma
- 6) **MEB** - myoepithelial cells
- 7) **F** - fibroblast

## Mamma non lactans - HE 5x



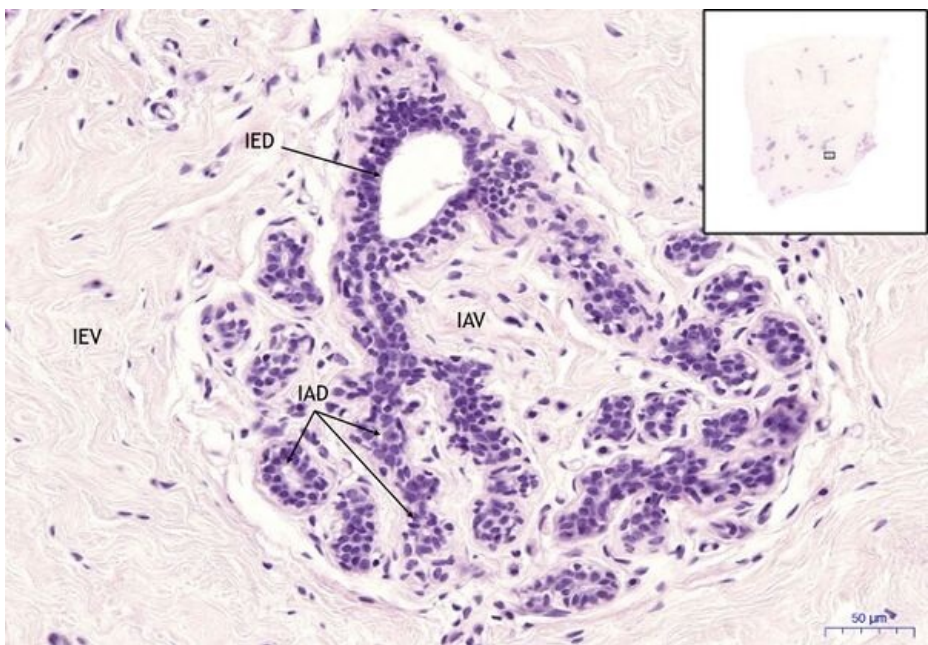
### Mamma non lactans:

- 1) **L** - lobule
- 2) **IAD** - intralobular duct
- 3) **IAV** - intralobular stroma
- 4) **IED** - interlobular duct
- 5) **IEV** - interlobular stroma
- 6) **MEB** - myoepithelial cells
- 7) **F** - fibroblast

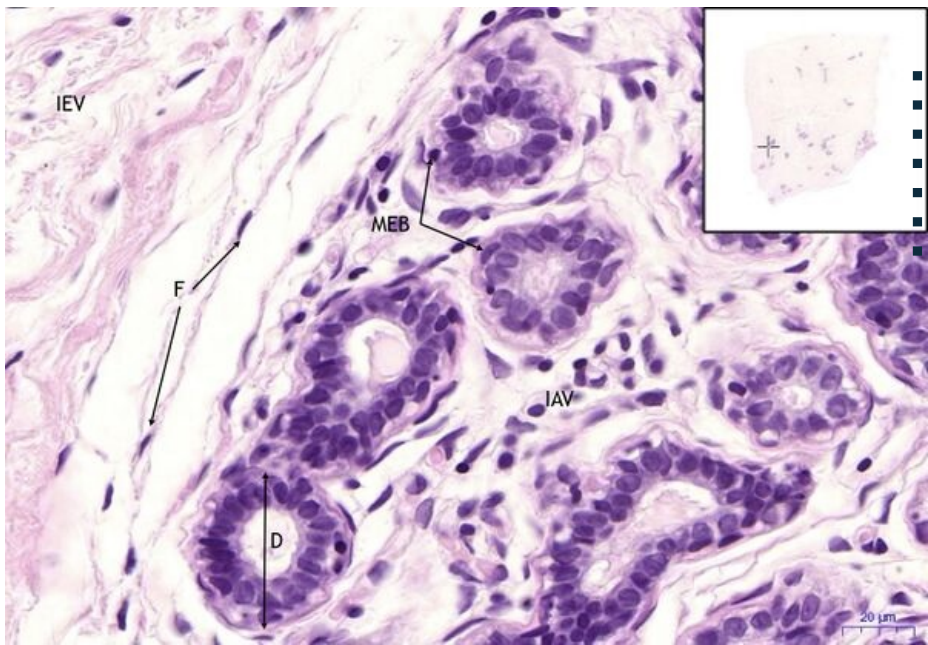
## Mamma non lactans - HE 20x

### Mamma non lactans:

- 1) **L** - lobule
- 2) **IAD** - intralobular duct
- 3) **IAV** - intralobular stroma
- 4) **IED** - interlobular duct
- 5) **IEV** - interlobular stroma
- 6) **MEB** - myoepithelial cells
- 7) **F** - fibroblast



### Mamma non lactans - HE 40x



#### Mamma non lactans:

- 1) L - lobule
- 2) IAD - intralobular duct
- 3) IAV - intralobular stroma
- 4) IED - interlobular duct
- 5) IEV - interlobular stroma
- 6) MEB - myoepithelial cells
- 7) F - fibroblast

### Navigation

#### Navigation: Epithelial / Epithelial tissue

← Preparation no. 15 | List of preparations | Preparation no. 17 →

#### Navigation: Skin system / Skin

← Preparation K7 | List of preparations | Preparation K9 →