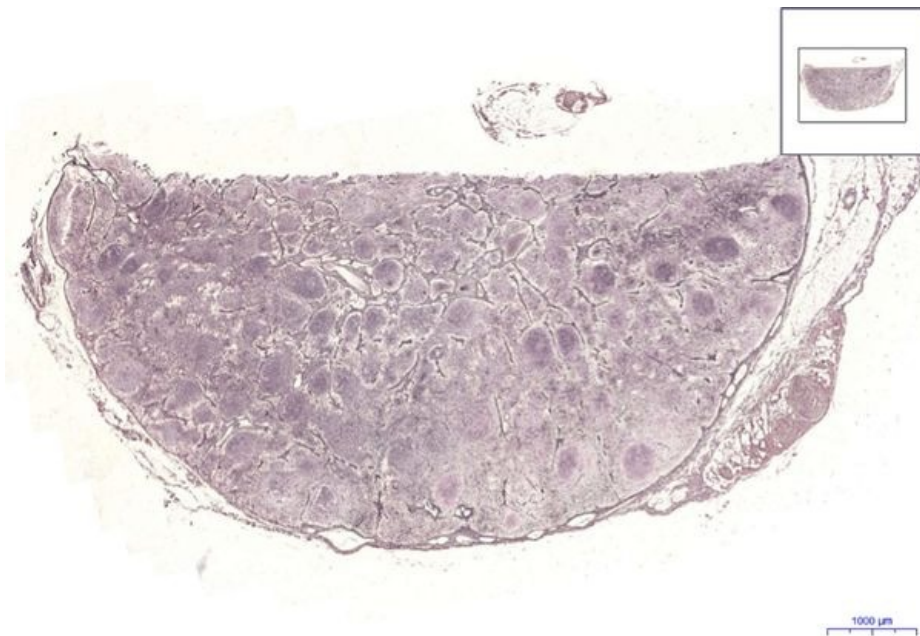


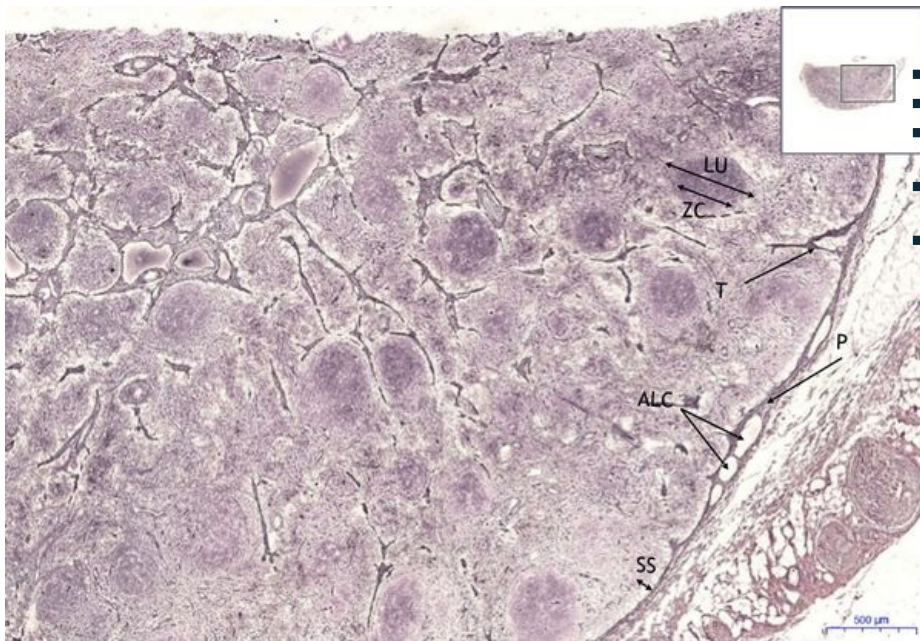
Lymph node - Ag

Lymph node, Ag 1x



Lymph node:

Lymph node, Ag 2x



Lymph node:

- 1) P - capsule
- 2) SS - subcapsular sinus
- 3) LU - lymph node
- 4) T - trabeculae
- 5) ALC - afferent lymph vessel

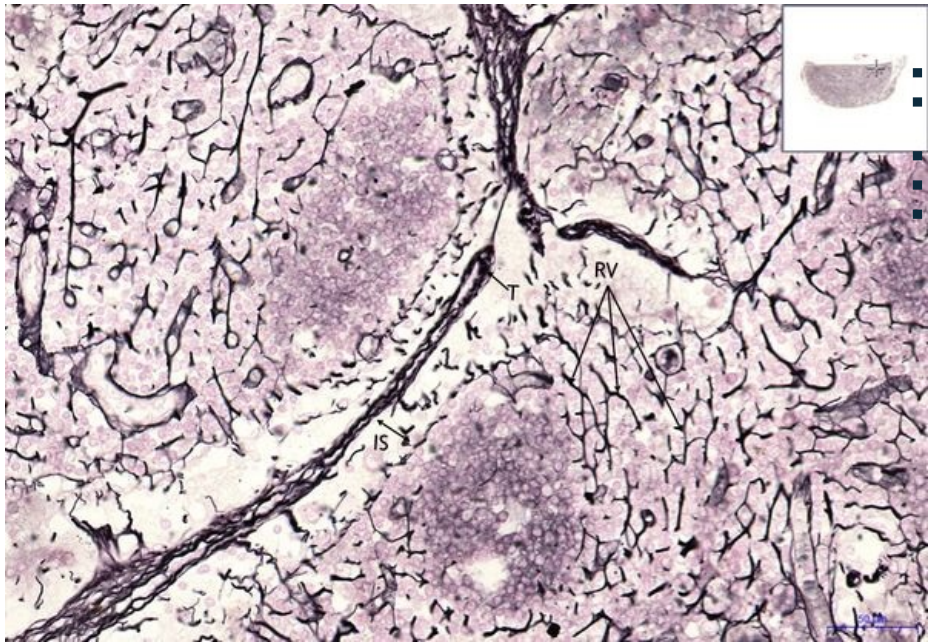
Lymph node, Ag 13.4x

Lymph node:

- 1) P - capsule
- 2) SS - subcapsular sinus
- 3) LU - lymph nodule
- a) ZC - germinal center
- 4) ALC - afferent lymph vessel
- a) CH - valve



Lymph node, Ag 20x



Lymph node:

- 1) **T** - trabeculae
- a) **IS** - interfollicular sinus
- 2) **RV** - reticular fibers
- 1) **P** - capsule
- 2) **SS** - subcapsular sinus

Navigation

Navigation: Immune system / Immune system

← Preparation L1 | List of preparations | Preparation L3 →